

## Product datasheet

# Anti-Natriuretic Peptide Receptor C antibody [OT11H6] ab123957

画像数 8

### 製品の概要

|              |  |
|--------------|--|
| 製品名          | Anti-Natriuretic Peptide Receptor C antibody [OT11H6]  |
| 製品の詳細        | Mouse monoclonal [OT11H6] to Natriuretic Peptide Receptor C  |
| 由来種          | Mouse  |
| アプリケーション     | <b>適用あり:</b> WB, IHC-P, Flow Cyt, ICC/IF   |
| 種交差性         | <b>交差種:</b> Human  |
| 免疫原          | Recombinant full length Human Natriuretic Peptide Receptor C protein produced in HEK293T cells (NP_000899).  |
| ポジティブ・コントロール | HEK293T cells transfected with pCMV6-ENTRY Natriuretic Peptide Receptor C cDNA; Human kidney, liver and liver carcinoma tissues; COS7 cells transiently transfected by pCMV6-ENTRY Natriuretic Peptide Receptor C; HeLa and HT29 cells; HEK293T cells transfected with pCMV6-ENTRY Natriuretic Peptide Receptor C. |
| 特記事項         | Dilute in PBS (pH7.3) before use.  |

### 製品の特性

|          |  |
|----------|--|
| 製品の状態    | Liquid   |
| 保存方法     | Shipped at 4°C. Upon delivery aliquot and store at -20°C. Avoid repeated freeze / thaw cycles. |
| バッファー    | pH: 7.30<br>Preservative: 0.02% Sodium azide<br>Constituents: 48% PBS, 50% Glycerol, 1% BSA    |
| 精製度      | Protein A purified   |
| 特記事項(精製) | ab123957 is purified from Mouse ascites fluid by affinity chromatography.                      |
| ポリクローナル  | モノクローナル  |
| クローン名    | OT11H6   |
| アイソタイプ   | IgG2b  |

### アプリケーション

Our [Abpromise guarantee](#) covers the use of **ab123957** in the following tested applications.

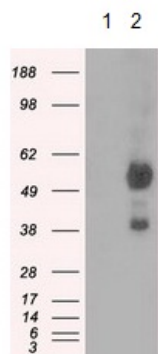
The application notes include recommended starting dilutions; optimal dilutions/concentrations should be determined by the end user.

| アプリケーション | Abreviews | 特記事項   |
|----------|-----------|--|
| WB       |           | 1/2000. Predicted molecular weight: 60 kDa.  |
| IHC-P    |           | 1/50.  |
| Flow Cyt |           | 1/100.<br><a href="#">ab170192</a> - Mouse monoclonal IgG2b, is suitable for use as an isotype control with this antibody. |
| ICC/IF   |           | 1/100.   |

### ターゲット情報

|       |   |
|-------|---|
| 機能    | Receptor for the natriuretic peptide hormones, binding with similar affinities atrial natriuretic peptide NPPA/ANP, brain natriuretic peptide NPPB/BNP, and C-type natriuretic peptide NPPC/CNP. May function as a clearance receptor for NPPA, NPPB and NPPC, regulating their local concentrations and effects. May regulate diuresis, blood pressure and skeletal development. Does not have guanylate cyclase activity. |
| 配列類似性 | Belongs to the ANF receptor family.   |
| 細胞内局在 | Membrane.   |

### 画像



Western blot - Anti-Natriuretic Peptide Receptor C antibody [11H6] (ab123957)

**All lanes** : Anti-Natriuretic Peptide Receptor C antibody [OT111H6] (ab123957) at 1/2000 dilution

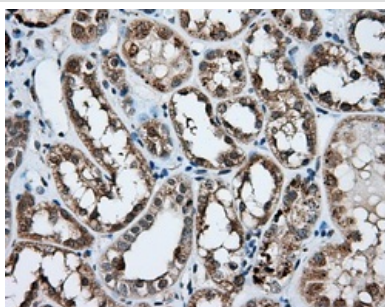
**Lane 1** : HEK293T cells transfected with pCMV6-ENTRY control cDNA

**Lane 2** : HEK293T cells transfected with pCMV6-ENTRY Natriuretic Peptide Receptor C cDNA

Lysates/proteins at 5 µg per lane.

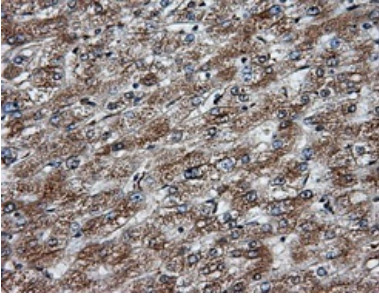
**Predicted band size:** 60 kDa

HEK293T cell lysates were generated from transient transfection of the cDNA clone (RC219453)



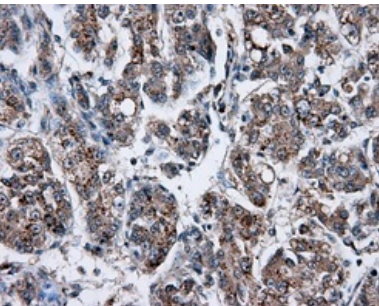
Immunohistochemistry (Formalin/PFA-fixed paraffin-embedded sections) - Anti-Natriuretic Peptide Receptor C antibody [11H6] (ab123957)

ab123957, at 1/50 dilution, staining Natriuretic Peptide Receptor C in paraffin-embedded Human kidney tissue by Immunohistochemistry.



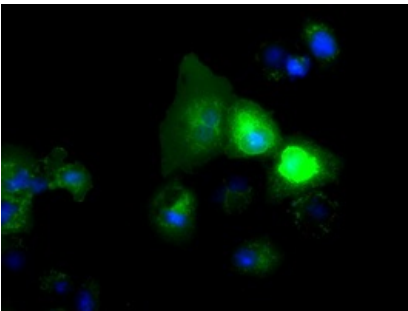
ab123957, at 1/50 dilution, staining Natriuretic Peptide Receptor C in paraffin-embedded Human liver tissue by Immunohistochemistry.

Immunohistochemistry (Formalin/PFA-fixed paraffin-embedded sections) - Anti-Natriuretic Peptide Receptor C antibody [11H6] (ab123957)



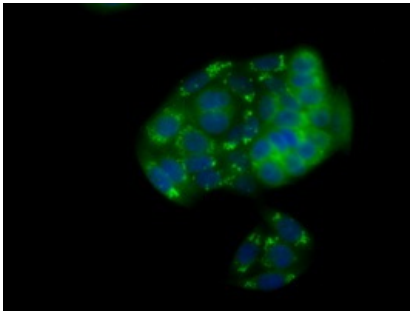
ab123957, at 1/50 dilution, staining Natriuretic Peptide Receptor C in paraffin-embedded Human liver carcinoma tissue by Immunohistochemistry.

Immunohistochemistry (Formalin/PFA-fixed paraffin-embedded sections) - Anti-Natriuretic Peptide Receptor C antibody [11H6] (ab123957)



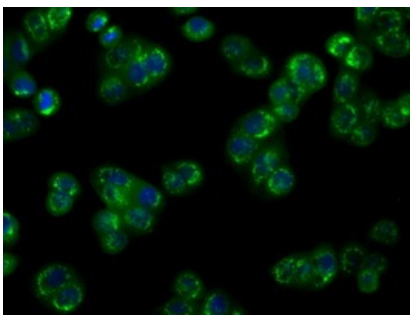
ab123957, at 1/100 dilution, staining Natriuretic Peptide Receptor C in COS7 cells transiently transfected by pCMV6-ENTRY Natriuretic Peptide Receptor C by Immunofluorescence.

Immunocytochemistry/ Immunofluorescence - Anti-Natriuretic Peptide Receptor C antibody [11H6] (ab123957)



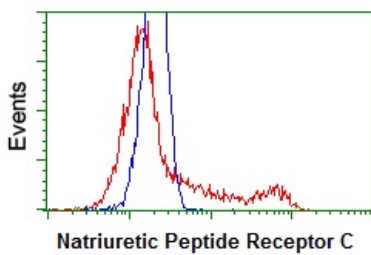
ab123957, at 1/100 dilution, staining Natriuretic Peptide Receptor C in HeLa cells by Immunofluorescence.

Immunocytochemistry/ Immunofluorescence - Anti-Natriuretic Peptide Receptor C antibody [11H6] (ab123957)



ab123957, at 1/100 dilution, staining Natriuretic Peptide Receptor C in HT29 cells by Immunofluorescence.

Immunocytochemistry/ Immunofluorescence - Anti-Natriuretic Peptide Receptor C antibody [11H6] (ab123957)



ab123957 at 1/100 dilution staining Natriuretic Peptide Receptor C in HEK293T cells transfected with either pCMV6-ENTRY Natriuretic Peptide Receptor C (Red) or empty vector control plasmid (Blue) by Flow Cytometry.

Flow Cytometry - Anti-Natriuretic Peptide Receptor C antibody [11H6] (ab123957)

**Please note:** All products are "FOR RESEARCH USE ONLY AND ARE NOT INTENDED FOR DIAGNOSTIC OR THERAPEUTIC USE"

### Our Abpromise to you: Quality guaranteed and expert technical support

- Replacement or refund for products not performing as stated on the datasheet
- Valid for 12 months from date of delivery
- Response to your inquiry within 24 hours

- We provide support in Chinese, English, French, German, Japanese and Spanish
- Extensive multi-media technical resources to help you
- We investigate all quality concerns to ensure our products perform to the highest standards

If the product does not perform as described on this datasheet, we will offer a refund or replacement. For full details of the Abpromise, please visit <http://www.abcam.co.jp/abpromise> or contact our technical team.

### **Terms and conditions**

---

- Guarantee only valid for products bought direct from Abcam or one of our authorized distributors