

Product datasheet

Anti-LAT2 antibody [8B12] ab123896

画像数 2

製品の概要

製品名	Anti-LAT2 antibody [8B12]
製品の詳細	Mouse monoclonal [8B12] to LAT2
由来種	Mouse
アプリケーション	適用あり: WB, IHC-P
種交差性	交差種: Human
免疫原	Recombinant Human LAT2 protein expressed in 293T cells.
ポジティブ・コントロール	HEK293T cells transfected with the pCMV6-ENTRY LAT2; Human kidney carcinoma tissue.
特記事項	Dilute in PBS (pH7.3) before use.

製品の特性

製品の状態	Liquid
保存方法	Shipped at 4°C. Upon delivery aliquot and store at -20°C. Avoid repeated freeze / thaw cycles.
バッファー	pH: 7.30 Preservative: 0.02% Sodium azide Constituents: 48% PBS, 50% Glycerol, 1% BSA
精製度	Protein G purified
特記事項(精製)	Purified from Mouse ascites fluid by affinity chromatography.
ポリ/モノ	モノクローナル
クローン名	8B12
アイソタイプ	IgG1

アプリケーション

Our [Abpromise guarantee](#) covers the use of **ab123896** in the following tested applications.

The application notes include recommended starting dilutions; optimal dilutions/concentrations should be determined by the end user.

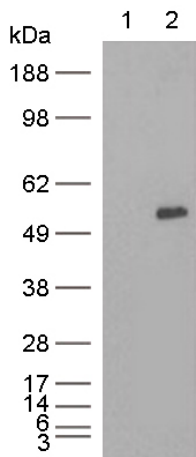
アプリケーション	Abreviews	特記事項
WB		1/500. Predicted molecular weight: 58 kDa.

アプリケーション	Abreviews	特記事項
IHC-P		1/50.

ターゲット情報

機能	Sodium-independent, high-affinity transport of small and large neutral amino acids such as alanine, serine, threonine, cysteine, phenylalanine, tyrosine, leucine, arginine and tryptophan, when associated with SLC3A2/4F2hc. Acts as an amino acid exchanger. Has higher affinity for L-phenylalanine than LAT1 but lower affinity for glutamine and serine. L-alanine is transported at physiological concentrations. Plays a role in basolateral (re)absorption of neutral amino acids. Involved in the uptake of methylmercury (MeHg) when administered as the L-cysteine or D,L-homocysteine complexes, and hence plays a role in metal ion homeostasis and toxicity. Involved in the cellular activity of small molecular weight nitrosothiols, via the stereoselective transport of L-nitrosocysteine (L-CNSO) across the transmembrane. Plays an essential role in the reabsorption of neutral amino acids from the epithelial cells to the bloodstream in the kidney.
組織特異性	Strongest expression is observed in kidney and moderate expression in placenta and brain, followed by liver, prostate, testis, ovary, lymph node, thymus, spleen, skeletal muscle and heart. Also expressed in fetal liver as well as in the retinal pigment epithelial cell line ARPE-19 and the intestinal epithelial cell line Caco-2.
配列類似性	Belongs to the amino acid-polyamine-organocation (APC) superfamily. L-type amino acid transporter (LAT) (TC 2.A.3.8) family.
細胞内局在	Cytoplasm. Basolateral cell membrane. Localized to the cytoplasm when expressed alone but when coexpressed with SLC3A2/4F2hc, is localized to the plasma membrane. Colocalized with SLC3A2/4F2hc at the basolateral membrane of kidney cortex proximal tubules and small intestine epithelia of the villi.

画像



Western blot - Anti-LAT2 antibody [8B12]
(ab123896)

All lanes : Anti-LAT2 antibody [8B12]
(ab123896) at 1/500 dilution

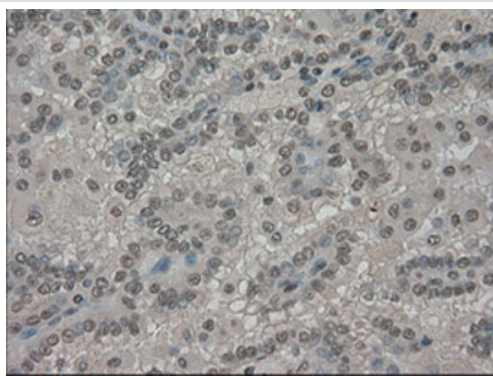
Lane 1 : HEK293T cells transfected with
pCMV6-ENTRY control cDNA

Lane 2 : HEK293T cells transfected with
pCMV6-ENTRY LAT2 cDNA

Lysates/proteins at 5 µg per lane.

Predicted band size: 58 kDa

HEK293T cell lysates were generated from
transient transfection of the cDNA clone
(RC204737)



Immunohistochemistry (Formalin/PFA-fixed paraffin-
embedded sections) - Anti-LAT2 antibody [8B12]
(ab123896)

ab123896, at 1/50, staining LAT2 in paraffin-
embedded Human kidney carcinoma tissue by
immunohistochemistry.

Please note: All products are "FOR RESEARCH USE ONLY AND ARE NOT INTENDED FOR DIAGNOSTIC OR THERAPEUTIC USE"

Our Abpromise to you: Quality guaranteed and expert technical support

- Replacement or refund for products not performing as stated on the datasheet
- Valid for 12 months from date of delivery
- Response to your inquiry within 24 hours
- We provide support in Chinese, English, French, German, Japanese and Spanish
- Extensive multi-media technical resources to help you
- We investigate all quality concerns to ensure our products perform to the highest standards

If the product does not perform as described on this datasheet, we will offer a refund or replacement. For full details of the Abpromise,

please visit <http://www.abcam.co.jp/abpromise> or contact our technical team.

Terms and conditions

- Guarantee only valid for products bought direct from Abcam or one of our authorized distributors