

Product datasheet

Anti-MAGOH antibody ab123399

画像数 1

製品の概要

製品名	Anti-MAGOH antibody
製品の詳細	Rabbit polyclonal to MAGOH
由来種	Rabbit
アプリケーション	適用あり: WB
種交差性	交差種: Human
免疫原	Synthetic peptide conjugated to KLH, corresponding to a region within internal sequence amino acids 45-74 of Human MAGOH (NP_002361.1).
ポジティブ・コントロール	K-562 cell line lysates

製品の特性

製品の状態	Liquid
保存方法	Shipped at 4°C. Store at 4°C (up to 6 months). Store at -20°C long term.
バッファー	Preservative: 0.09% Sodium azide Constituent: 99% PBS
精製度	Immunogen affinity purified
特記事項 (精製)	ab123399 is purified through a protein A column, followed by peptide affinity purification
ポリ/モノ	ポリクローナル
アイソタイプ	IgG

アプリケーション

Our [Abpromise guarantee](#) covers the use of **ab123399** in the following tested applications.

The application notes include recommended starting dilutions; optimal dilutions/concentrations should be determined by the end user.

アプリケーション	Abreviews	特記事項
WB		1/100 - 1/500. Predicted molecular weight: 17 kDa.

## 機能

Component of a splicing-dependent multiprotein exon junction complex (EJC) deposited at splice junction on mRNAs. The EJC is a dynamic structure consisting of a few core proteins and several more peripheral nuclear and cytoplasmic associated factors that join the complex only transiently either during EJC assembly or during subsequent mRNA metabolism. Core components of the EJC, that remains bound to spliced mRNAs throughout all stages of mRNA metabolism, functions to mark the position of the exon-exon junction in the mature mRNA and thereby influences downstream processes of gene expression including mRNA splicing, nuclear mRNA export, subcellular mRNA localization, translation efficiency and nonsense-mediated mRNA decay (NMD). Remains associated with the mRNA after its export to the cytoplasm and require translation of the mRNA for removal. The heterodimer MAGOH-RBM8A interacts with PYM that function to enhance the translation of EJC-bearing spliced mRNAs by recruiting them to the ribosomal 48S preinitiation complex.

## 組織特異性

Ubiquitous.

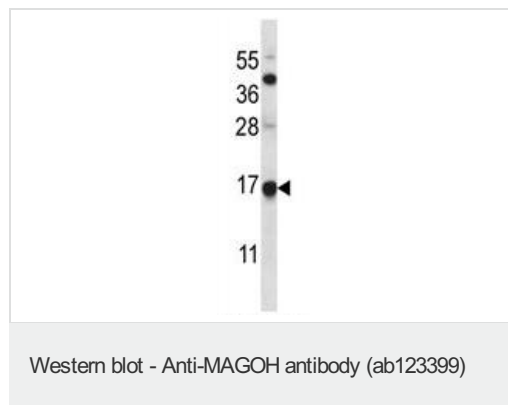
## 配列類似性

Belongs to the mago nashi family.

## 細胞内局在

Nucleus. Nucleus speckle. Cytoplasm. Detected in granule-like structures in the dendroplasm (By similarity). Travels to the cytoplasm as part of the exon junction complex (EJC) bound to mRNA. Colocalizes with the core EJC, THOC4, NXF1 and UAP56 in the nucleus and nuclear speckles.

## 画像



Anti-MAGOH antibody (ab123399) at 1/100 dilution + K-562 cell line lysates at 35 µg

**Predicted band size:** 17 kDa

**Please note:** All products are "FOR RESEARCH USE ONLY AND ARE NOT INTENDED FOR DIAGNOSTIC OR THERAPEUTIC USE"

## Our Abpromise to you: Quality guaranteed and expert technical support

- Replacement or refund for products not performing as stated on the datasheet
- Valid for 12 months from date of delivery
- Response to your inquiry within 24 hours
- We provide support in Chinese, English, French, German, Japanese and Spanish
- Extensive multi-media technical resources to help you
- We investigate all quality concerns to ensure our products perform to the highest standards

If the product does not perform as described on this datasheet, we will offer a refund or replacement. For full details of the Abpromise, please visit <http://www.abcam.co.jp/abpromise> or contact our technical team.

## Terms and conditions

---

- Guarantee only valid for products bought direct from Abcam or one of our authorized distributors