

Product datasheet

Anti-SLC2A13 antibody ab123106

画像数 2

製品の概要

製品名	Anti-SLC2A13 antibody
製品の詳細	Rabbit polyclonal to SLC2A13
由来種	Rabbit
アプリケーション	適用あり: WB
種交差性	交差種: Mouse, Human
免疫原	Synthetic peptide conjugated to KLH, corresponding to a region within internal sequence amino acids 248-278 of Human SLC2A13 (NP_443117.3).
ポジティブ・コントロール	Human (Normal) Uterus lysate and Mouse Liver tissue lysate.

製品の特性

製品の状態	Liquid
保存方法	Shipped at 4°C. Store at 4°C (up to 6 months). Store at -20°C long term.
バッファー	Preservative: 0.09% Sodium azide Constituent: 99% PBS
精製度	Immunogen affinity purified
特記事項 (精製)	ab123106 is purified through a protein A column, followed by peptide affinity purification.
ポリ/モノ	ポリクローナル
アイソタイプ	IgG

アプリケーション

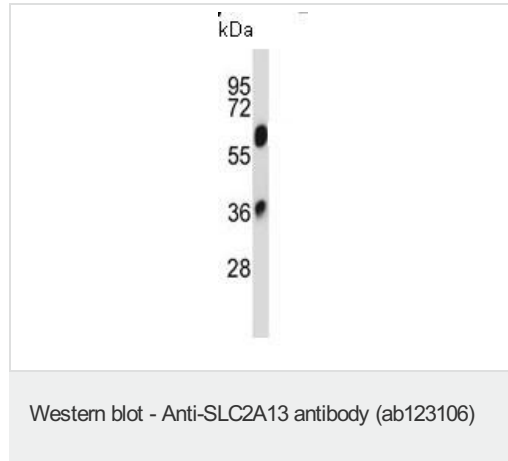
Our [Abpromise guarantee](#) covers the use of **ab123106** in the following tested applications.

The application notes include recommended starting dilutions; optimal dilutions/concentrations should be determined by the end user.

アプリケーション	Abreviews	特記事項
WB		1/100 - 1/500. Predicted molecular weight: 70 kDa.

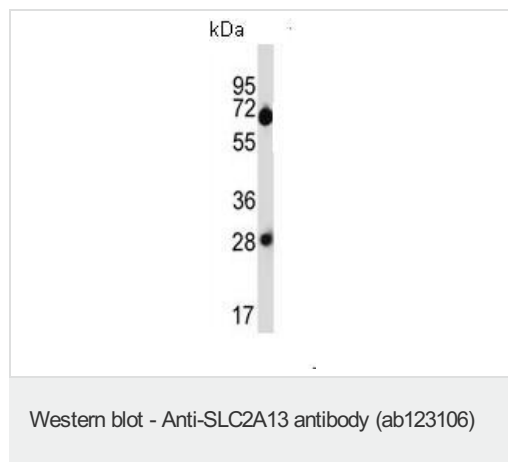
機能	H(+)-myo-inositol cotransporter. Can also transport related stereoisomers.
組織特異性	Predominantly expressed in the brain.
配列類似性	Belongs to the major facilitator superfamily. Sugar transporter (TC 2.A.1.1) family.
翻訳後修飾	Glycosylated.
細胞内局在	Membrane.

画像



Anti-SLC2A13 antibody (ab123106) at 1/100 dilution + Human (Normal) Uterus lysate at 35 µg

Predicted band size: 70 kDa



Anti-SLC2A13 antibody (ab123106) at 1/100 dilution + Mouse Liver tissue lysate at 35 µg

Predicted band size: 70 kDa

Please note: All products are "FOR RESEARCH USE ONLY AND ARE NOT INTENDED FOR DIAGNOSTIC OR THERAPEUTIC USE"

Our Abpromise to you: Quality guaranteed and expert technical support

- Replacement or refund for products not performing as stated on the datasheet
- Valid for 12 months from date of delivery
- Response to your inquiry within 24 hours
- We provide support in Chinese, English, French, German, Japanese and Spanish
- Extensive multi-media technical resources to help you
- We investigate all quality concerns to ensure our products perform to the highest standards

If the product does not perform as described on this datasheet, we will offer a refund or replacement. For full details of the Abpromise, please visit <http://www.abcam.co.jp/abpromise> or contact our technical team.

Terms and conditions

- Guarantee only valid for products bought direct from Abcam or one of our authorized distributors