

## Product datasheet

# Anti-TLR9 antibody [26C593] ab12121

★★★★☆ 2 Abreviews 11 References 画像数 2

### 製品の概要

製品名	Anti-TLR9 antibody [26C593]
製品の詳細	Mouse monoclonal [26C593] to TLR9
由来種	Mouse
特異性	This antibody is specific for TLR9.
アプリケーション	<b>適用あり:</b> IP, IHC-Fr, IHC-P, ICC, Flow Cyt, WB
種交差性	<b>交差種:</b> Mouse, Rat, Human, Rhesus monkey
免疫原	Synthetic peptide conjugated to KLH, corresponding to amino acids 268-284 of TLR9.
ポジティブ・コントロール	Human PBMC extracts. This antibody gave a positive result in IF in the following Formaldehyde fixed cell line: HCT116.

### 製品の特性

製品の状態	Liquid
保存方法	Shipped at 4°C. Upon delivery aliquot and store at -20°C or -80°C. Avoid repeated freeze / thaw cycles.
バッファー	Preservative: 0.02% Sodium Azide Constituents: PBS
精製度	Protein G purified
特記事項(精製)	Affinity purified.
ポリモノ	モノクローナル
クローン名	26C593
アイソタイプ	IgG1

### アプリケーション

Our [Abpromise guarantee](#) covers the use of **ab12121** in the following tested applications.

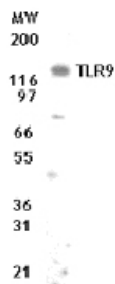
The application notes include recommended starting dilutions; optimal dilutions/concentrations should be determined by the end user.

アプリ ケー ション	Abreviews	特記事項
IP		Use at an assay dependent concentration. PubMed: 21665946
IHC-Fr		Use a concentration of 10 - 20 µg/ml.
IHC-P	★★★★☆	Use at an assay dependent concentration.
ICC		Use at an assay dependent concentration.
Flow Cyt		Use at an assay dependent concentration. <a href="#">ab170190</a> - Mouse monoclonal IgG1, is suitable for use as an isotype control with this antibody.
WB		Use a concentration of 1 - 2 µg/ml. Detects a band of approximately 120 kDa (predicted molecular weight: 117 kDa). For optimal results, primary antibody incubations should be performed at room temperature.

## ターゲット情報

機能	Key component of innate and adaptive immunity. TLRs (Toll-like receptors) control host immune response against pathogens through recognition of molecular patterns specific of microorganisms. TLR9 is a nucleotide-sensing TLR which is activated by unmethylated cytidine-phosphate-guanosine (CpG) dinucleotides. Acts via MYD88 and TRAF6, leading to NF-kappa-B activation, cytokine secretion and the inflammatory response.
組織特異性	Highly expressed in spleen, lymph node, tonsil and peripheral blood leukocytes, especially in plasmacytoid pre-dendritic cells. Levels are much lower in monocytes and CD11c+ immature dendritic cells. Also detected in lung and liver.
配列類似性	Belongs to the Toll-like receptor family. Contains 26 LRR (leucine-rich) repeats. Contains 1 TIR domain.
細胞内局在	Endoplasmic reticulum membrane. Endosome. Lysosome. Cytoplasmic vesicle > phagosome. Relocalizes from endoplasmic reticulum to endosome and lysosome upon stimulation with agonist.

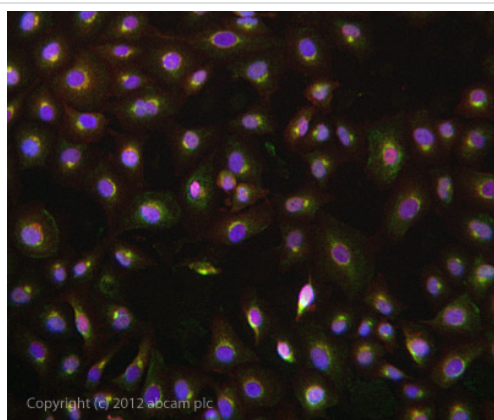
## 画像



Western blot - TLR9 antibody [26C593] (ab12121)

TLR9 detection by Western blot. The analysis of extracts from human PBMC by using ab12121 at a dilution of 2 µg/ml.

TLR9 detection by Western blot. The analysis of extracts from human PBMC by using ab12121 at a dilution of 2 µg/ml.



Immunocytochemistry/ Immunofluorescence - Anti-TLR9 antibody [26C593] (ab12121)

ab12121 stained HCT116 cells. The cells were 4% formaldehyde fixed (10 min) and then incubated in 1%BSA / 10% normal goat serum / 0.3M glycine in 0.1% PBS-Tween for 1h to permeabilise the cells and block non-specific protein-protein interactions. The cells were then incubated with the antibody ab12121 at 10µg/ml overnight at +4°C. The secondary antibody (green) was DyLight® 488 goat anti- mouse (ab96879) IgG (H+L) used at a 1/1000 dilution for 1h. Alexa Fluor® 594 WGA was used to label plasma membranes (red) at a 1/200 dilution for 1h. DAPI was used to stain the cell nuclei (blue) at a concentration of 1.43µM.

**Please note:** All products are "FOR RESEARCH USE ONLY AND ARE NOT INTENDED FOR DIAGNOSTIC OR THERAPEUTIC USE"

### Our Abpromise to you: Quality guaranteed and expert technical support

- Replacement or refund for products not performing as stated on the datasheet
- Valid for 12 months from date of delivery
- Response to your inquiry within 24 hours
- We provide support in Chinese, English, French, German, Japanese and Spanish
- Extensive multi-media technical resources to help you
- We investigate all quality concerns to ensure our products perform to the highest standards

If the product does not perform as described on this datasheet, we will offer a refund or replacement. For full details of the Abpromise, please visit <http://www.abcam.co.jp/abpromise> or contact our technical team.

### Terms and conditions

- Guarantee only valid for products bought direct from Abcam or one of our authorized distributors