

Product datasheet

Anti-Lipoprotein lipase antibody [5C6] ab119764

画像数 3

製品の概要

製品名	Anti-Lipoprotein lipase antibody [5C6]
製品の詳細	Mouse monoclonal [5C6] to Lipoprotein lipase
由来種	Mouse
アプリケーション	適用あり: WB, IHC-P, ICC/IF
種交差性	交差種: Human
免疫原	Recombinant full length Human Lipoprotein lipase (amino acids 28-475) produced in HEK293T cells (NP_000228).
ポジティブ・コントロール	HEK293T cell lysate transfected with pCMV6-ENTRY Lipoprotein lipase cDNA; Human pancreas tissue; COS7 cells transiently transfected with pCMV6-ENTRY Lipoprotein lipase.

製品の特性

製品の状態	Liquid
保存方法	Shipped at 4°C. Upon delivery aliquot and store at -20°C. Avoid repeated freeze / thaw cycles.
バッファー	pH: 7.30 Preservative: 0.02% Sodium azide Constituents: 48% PBS, 50% Glycerol, 1% BSA
精製度	Protein G purified
特記事項(精製)	ab119764 was purified from Mouse ascites fluids by affinity chromatography.
ポリモノ	モノクローナル
クローン名	5C6
アイソタイプ	IgG1

アプリケーション

Our [Abpromise guarantee](#) covers the use of **ab119764** in the following tested applications.

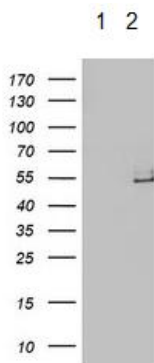
The application notes include recommended starting dilutions; optimal dilutions/concentrations should be determined by the end user.

アプリケーション	Abreviews	特記事項
WB		1/2000. Predicted molecular weight: 53 kDa.
IHC-P		1/150.
ICC/IF		1/100.

ターゲット情報

機能	The primary function of this lipase is the hydrolysis of triglycerides of circulating chylomicrons and very low density lipoproteins (VLDL). Binding to heparin sulfate proteoglycans at the cell surface is vital to the function. The apolipoprotein, APOC2, acts as a coactivator of LPL activity in the presence of lipids on the luminal surface of vascular endothelium.
関連疾患	Defects in LPL are the cause of lipoprotein lipase deficiency (LPL deficiency) [MIM:238600]; also known as familial chylomicronemia or hyperlipoproteinemia type I. LPL deficiency chylomicronemia is a recessive disorder usually manifesting in childhood. On a normal diet, patients often present with abdominal pain, hepatosplenomegaly, lipemia retinalis, eruptive xanthomata, and massive hypertriglyceridemia, sometimes complicated with acute pancreatitis.
配列類似性	Belongs to the AB hydrolase superfamily. Lipase family. Contains 1 PLAT domain.
翻訳後修飾	Tyrosine nitration after lipopolysaccharide (LPS) challenge down-regulates the lipase activity.
細胞内局在	Cell membrane. Secreted. Locates to the plasma membrane of microvilli of hepatocytes with triacyl-glycerol-rich lipoproteins (TRL). Some of the bound LPL is then internalized and located inside non-coated endocytic vesicles.

画像



Western blot - Anti-Lipoprotein lipase antibody [5C6] (ab119764)

All lanes : Anti-Lipoprotein lipase antibody [5C6] (ab119764) at 1/2000 dilution

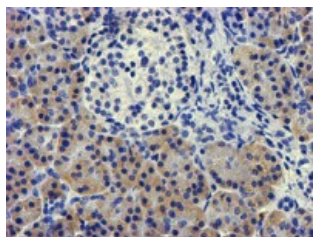
Lane 1 : HEK293T cell lysate transfected with pCMV6-ENTRY control

Lane 2 : HEK293T cell lysate transfected with pCMV6-ENTRY Lipoprotein lipase cDNA

Lysates/proteins at 5 µg per lane.

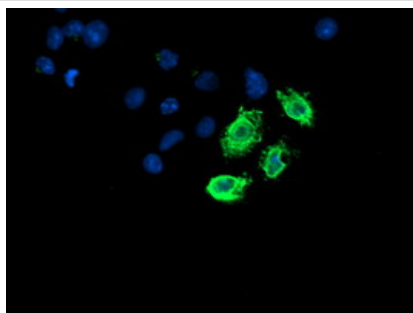
Predicted band size: 53 kDa

HEK293T cell lysates were generated from transient transfection of the cDNA clone (RC203766)



Immunohistochemistry (Formalin/PFA-fixed paraffin-embedded sections) - Anti-Lipoprotein lipase antibody [5C6] (ab119764)

ab119764, at 1/150 dilution, staining Lipoprotein lipase in paraffin-embedded Human pancreas tissue by Immunohistochemistry.



Immunocytochemistry/ Immunofluorescence - Anti-Lipoprotein lipase antibody [5C6] (ab119764)

ab119764, at 1/100 dilution, staining Lipoprotein lipase in COS7 cells transiently transfected with pCMV6-ENTRY Lipoprotein lipase by Immunofluorescence.

Please note: All products are "FOR RESEARCH USE ONLY AND ARE NOT INTENDED FOR DIAGNOSTIC OR THERAPEUTIC USE"

Our Abpromise to you: Quality guaranteed and expert technical support

- Replacement or refund for products not performing as stated on the datasheet
- Valid for 12 months from date of delivery
- Response to your inquiry within 24 hours

- We provide support in Chinese, English, French, German, Japanese and Spanish
- Extensive multi-media technical resources to help you
- We investigate all quality concerns to ensure our products perform to the highest standards

If the product does not perform as described on this datasheet, we will offer a refund or replacement. For full details of the Abpromise, please visit <http://www.abcam.co.jp/abpromise> or contact our technical team.

Terms and conditions

- Guarantee only valid for products bought direct from Abcam or one of our authorized distributors