

Product datasheet

Anti-Aminopeptidase A antibody [OTI3E7] ab119306

画像数 12

製品の概要

製品名	Anti-Aminopeptidase A antibody [OTI3E7]
製品の詳細	Mouse monoclonal [OTI3E7] to Aminopeptidase A
由来種	Mouse
アプリケーション	適用あり: WB, IHC-P, ICC/IF
種交差性	交差種: Human
免疫原	Recombinant full length protein corresponding to Human Aminopeptidase A. Produced in HEK293T cells. Database link: NP_001968
ポジティブ・コントロール	HEK293T cells transfected with Aminopeptidase A, Human Kidney, Carcinoma of Human kidney, Human liver, Carcinoma of Human lung, Carcinoma of Human thyroid, Human endometrium, Adenocarcinoma of Human endometrium, Carcinoma of Human bladder, Human lymphoma, and Human tonsil tissues, COS7 cells transiently transfected with Aminopeptidase A.
特記事項	Dilute in PBS (pH7.3) before use. The clone number has been updated from 3E7 to OTI3E7, both clone numbers name the same clone.

製品の特性

製品の状態	Liquid
保存方法	Shipped at 4°C. Upon delivery aliquot and store at -20°C. Avoid freeze / thaw cycles.
バッファー	pH: 7.30 Preservative: 0.02% Sodium azide Constituents: 48% PBS, 1% BSA, 50% Glycerol
精製度	Protein A purified
ポリ/モノ	モノクローナル
クローン名	OTI3E7
アイソタイプ	IgG2a

アプリケーション

Our [Abpromise guarantee](#) covers the use of **ab119306** in the following tested applications.

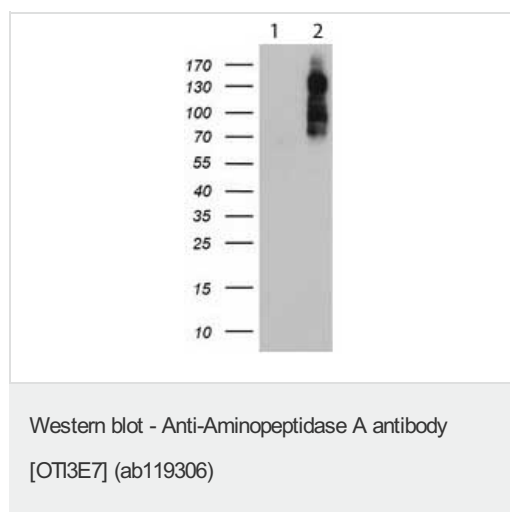
The application notes include recommended starting dilutions; optimal dilutions/concentrations should be determined by the end user.

アプリケーション	Abreviews	特記事項
WB		1/500. Predicted molecular weight: 109 kDa.
IHC-P		1/150.
ICC/IF		1/100.

ターゲット情報

機能	Appears to have a role in the catabolic pathway of the renin-angiotensin system. Probably plays a role in regulating growth and differentiation of early B-lineage cells.
組織特異性	Expressed by epithelial cells of the proximal tubule cells and the glomerulus of the nephron. Also found in a variety of other tissues.
配列類似性	Belongs to the peptidase M1 family.
細胞内局在	Membrane.

画像



All lanes : Anti-Aminopeptidase A antibody [OTI3E7] (ab119306) at 1/500 dilution

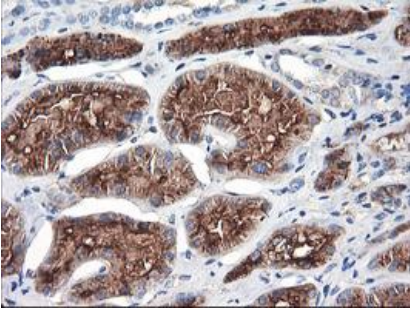
Lane 1 : HEK293T cell lysate transfected with pCMV6-ENTRY control

Lane 2 : HEK293T cell lysate transfected with pCMV6-ENTRY BP1

Lysates/proteins at 5 µg per lane.

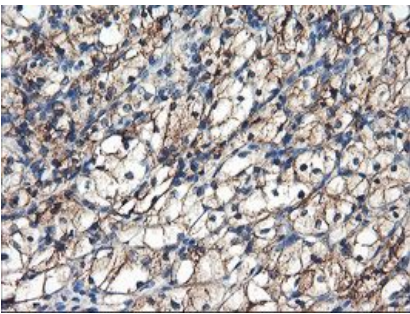
Predicted band size: 109 kDa

HEK293T cell lysates were generated from transient transfection of the cDNA clone (RC210521)



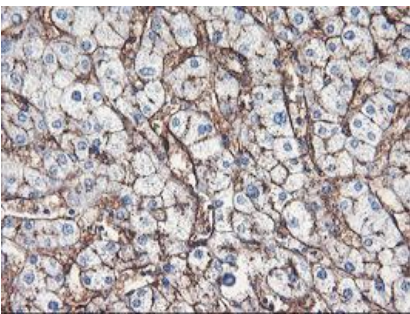
Immunohistochemical staining of paraffin-embedded Human Kidney tissue using ab119306 at a dilution of 1/150.

Immunohistochemistry (Formalin/PFA-fixed paraffin-embedded sections) - Anti-Aminopeptidase A antibody [OTI3E7] (ab119306)



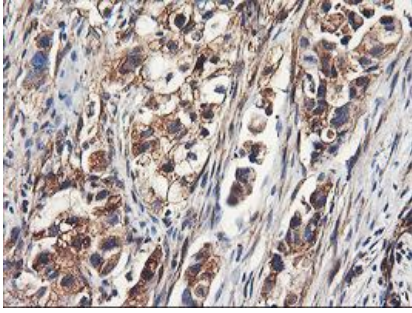
Immunohistochemical staining of paraffin-embedded Carcinoma of Human Kidney tissue using ab119306 at a dilution of 1/150.

Immunohistochemistry (Formalin/PFA-fixed paraffin-embedded sections) - Anti-Aminopeptidase A antibody [OTI3E7] (ab119306)



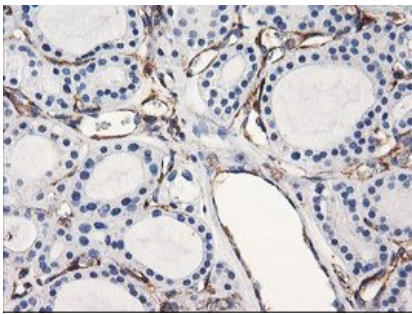
Immunohistochemical staining of paraffin-embedded Human liver tissue using ab119306 at a dilution of 1/150.

Immunohistochemistry (Formalin/PFA-fixed paraffin-embedded sections) - Anti-Aminopeptidase A antibody [OTI3E7] (ab119306)



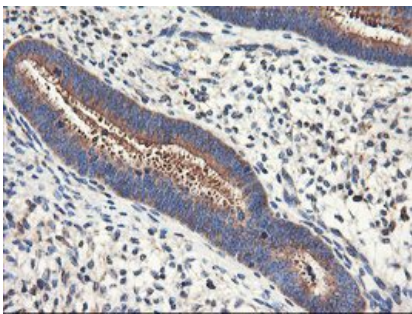
Immunohistochemical staining of paraffin-embedded Carcinoma of Human lung tissue using ab119306 at a dilution of 1/150.

Immunohistochemistry (Formalin/PFA-fixed paraffin-embedded sections) - Anti-Aminopeptidase A antibody [OTI3E7] (ab119306)



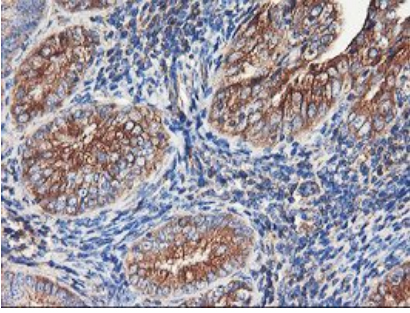
Immunohistochemical staining of paraffin-embedded Carcinoma of Human thyroid tissue using ab119306 at a dilution of 1/150.

Immunohistochemistry (Formalin/PFA-fixed paraffin-embedded sections) - Anti-Aminopeptidase A antibody [OTI3E7] (ab119306)



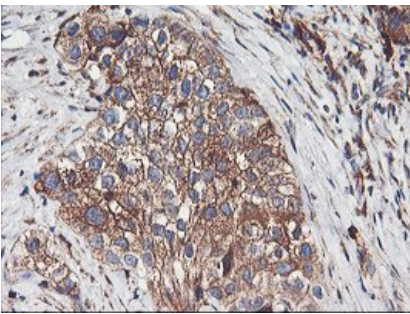
Immunohistochemical staining of paraffin-embedded Human endometrium tissue using ab119306 at a dilution of 1/150.

Immunohistochemistry (Formalin/PFA-fixed paraffin-embedded sections) - Anti-Aminopeptidase A antibody [OTI3E7] (ab119306)



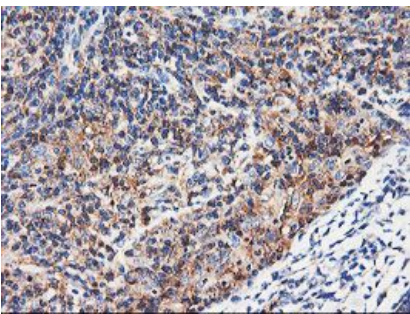
Immunohistochemical staining of paraffin-embedded Adenocarcinoma of Human endometrium tissue using ab119306 at a dilution of 1/150.

Immunohistochemistry (Formalin/PFA-fixed paraffin-embedded sections) - Anti-Aminopeptidase A antibody [OTI3E7] (ab119306)



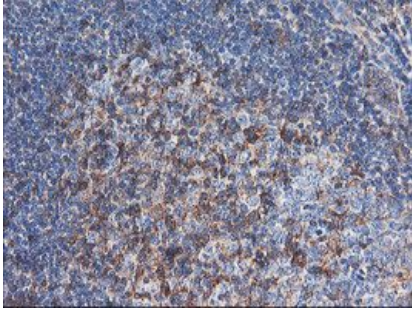
Immunohistochemical staining of paraffin-embedded Carcinoma of Human bladder tissue using ab119306 at a dilution of 1/150.

Immunohistochemistry (Formalin/PFA-fixed paraffin-embedded sections) - Anti-Aminopeptidase A antibody [OTI3E7] (ab119306)



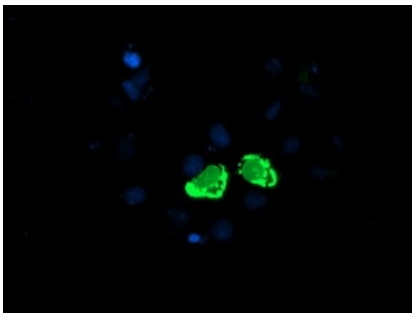
Immunohistochemical staining of paraffin-embedded Human lymphoma tissue using ab119306 at a dilution of 1/150.

Immunohistochemistry (Formalin/PFA-fixed paraffin-embedded sections) - Anti-Aminopeptidase A antibody [OTI3E7] (ab119306)



Immunohistochemical staining of paraffin-embedded Human tonsil tissue using ab119306 at a dilution of 1/150.

Immunohistochemistry (Formalin/PFA-fixed paraffin-embedded sections) - Anti-Aminopeptidase A antibody [OTI3E7] (ab119306)



Immunofluorescent staining of COS7 cells transiently transfected by pCMV6-ENTRY BP1 using ab119306 at a dilution of 1/100.

Immunocytochemistry/ Immunofluorescence - Anti-Aminopeptidase A antibody [OTI3E7] (ab119306)

Please note: All products are "FOR RESEARCH USE ONLY AND ARE NOT INTENDED FOR DIAGNOSTIC OR THERAPEUTIC USE"

Our Abpromise to you: Quality guaranteed and expert technical support

- Replacement or refund for products not performing as stated on the datasheet
- Valid for 12 months from date of delivery
- Response to your inquiry within 24 hours
- We provide support in Chinese, English, French, German, Japanese and Spanish
- Extensive multi-media technical resources to help you
- We investigate all quality concerns to ensure our products perform to the highest standards

If the product does not perform as described on this datasheet, we will offer a refund or replacement. For full details of the Abpromise, please visit <http://www.abcam.co.jp/abpromise> or contact our technical team.

Terms and conditions

- Guarantee only valid for products bought direct from Abcam or one of our authorized distributors