


Product datasheet

Anti-PIM1 antibody ab118497

画像数 1

製品の概要

製品名	Anti-PIM1 antibody
製品の詳細	Goat polyclonal to PIM1
由来種	Goat
アプリケーション	適用あり: IHC-P
種交差性	交差種: Human 交差が予測される動物種: Mouse, Rat, Cow, Cat 
免疫原	Synthetic peptide: C-KLAPGKEKEPLESQ , corresponding to amino acids 24-37 of Human PIM1 (NP_002639.1). Run BLAST with Run BLAST with
ポジティブ・コントロール	Human Spleen

製品の特性

製品の状態	Liquid
保存方法	Shipped at 4°C. Upon delivery aliquot and store at -20°C. Avoid repeated freeze / thaw cycles.
バッファー	pH: 7.30 Preservative: 0.02% Sodium azide Constituents: 99% Tris buffered saline, 0.5% BSA
精製度	Immunogen affinity purified
ポリ/モノ	ポリクローナル
アイソタイプ	IgG

アプリケーション

Our [Abpromise guarantee](#) covers the use of **ab118497** in the following tested applications.

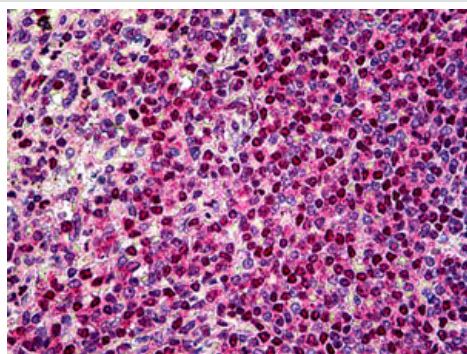
The application notes include recommended starting dilutions; optimal dilutions/concentrations should be determined by the end user.

アプリケーション	Abreviews	特記事項
IHC-P		Use a concentration of 2.5 - 5 µg/ml.

ターゲット情報

機能	May affect the structure or silencing of chromatin by phosphorylating HP1 gamma/CBX3. Isoform 2 promotes the G1/S transition of the cell cycle via up-regulation of CDK2 activity and phosphorylation of CDKN1B, resulting in enhanced nuclear export and proteasome-dependent degradation of CDKN1B. Isoform 2 also represses CDKN1B transcription by phosphorylating and inactivating the transcription factor FOXO3. Plays a role in signal transduction in blood cells. Contributes to both cell proliferation and survival and thus provides a selective advantage in tumorigenesis.
組織特異性	Expressed primarily in cells of the hematopoietic and germline lineages. Isoform 1 and isoform 2 are both expressed in prostate cancer cell lines.
配列類似性	Belongs to the protein kinase superfamily, CAMK Ser/Thr protein kinase family, PIM subfamily. Contains 1 protein kinase domain.
翻訳後修飾	Autophosphorylated on both serine/threonine and tyrosine residues.
細胞内局在	Cytoplasm. Nucleus and Cell membrane.

画像



ab118497 at 2.5 µg/ml staining PIM1 in Human Spleen by Immunohistochemistry Formalin-fixed, Paraffin-embedded tissue.

Immunohistochemistry (Formalin/PFA-fixed paraffin-embedded sections) - Anti-PIM1 antibody (ab118497)

Please note: All products are "FOR RESEARCH USE ONLY AND ARE NOT INTENDED FOR DIAGNOSTIC OR THERAPEUTIC USE"

Our Abpromise to you: Quality guaranteed and expert technical support

- Replacement or refund for products not performing as stated on the datasheet
- Valid for 12 months from date of delivery
- Response to your inquiry within 24 hours

- We provide support in Chinese, English, French, German, Japanese and Spanish
- Extensive multi-media technical resources to help you
- We investigate all quality concerns to ensure our products perform to the highest standards

If the product does not perform as described on this datasheet, we will offer a refund or replacement. For full details of the Abpromise, please visit <http://www.abcam.co.jp/abpromise> or contact our technical team.

Terms and conditions

- Guarantee only valid for products bought direct from Abcam or one of our authorized distributors