

## Product datasheet

# Anti-CFHR5 antibody ab118122

画像数 2

### 製品の概要

製品名	Anti-CFHR5 antibody
製品の詳細	Rabbit polyclonal to CFHR5
由来種	Rabbit
アプリケーション	適用あり: WB, IP
種交差性	交差種: Recombinant fragment 交差が予測される動物種: Human
免疫原	Recombinant full length protein, corresponding to amino acids 1-569 of Human CFHR5 (NP_110414.1).
ポジティブ・コントロール	CFHR5 transfected 293T cell line.

### 製品の特性

製品の状態	Liquid
保存方法	Shipped at 4°C. Upon delivery aliquot and store at -20°C or -80°C. Avoid repeated freeze / thaw cycles.
バッファー	Constituent: 99% Whole serum
精製度	Whole antiserum
ポリ/モノ	ポリクローナル
アイソタイプ	IgG

### アプリケーション

Our [Abpromise guarantee](#) covers the use of **ab118122** in the following tested applications.

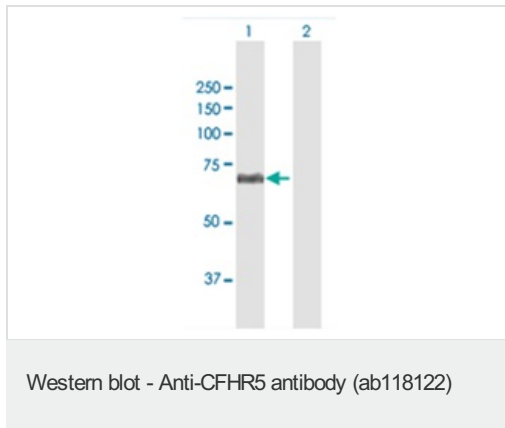
The application notes include recommended starting dilutions; optimal dilutions/concentrations should be determined by the end user.

アプリケーション	Abreviews	特記事項
WB		1/1000. Predicted molecular weight: 64 kDa.
IP		Use at an assay dependent dilution.

## ターゲット情報

機能	Involved in complement regulation.
組織特異性	Expressed by the liver and secreted in plasma.
関連疾患	Note=Defects in CFHR5 have been found in patients with atypical hemolytic uremic syndrome and may contribute to the disease. Atypical hemolytic uremic syndrome is a complex genetic disease characterized by microangiopathic hemolytic anemia, thrombocytopenia, renal failure and absence of episodes of enterocolitis and diarrhea. In contrast to typical hemolytic uremic syndrome, atypical forms have a poorer prognosis, with higher death rates and frequent progression to end-stage renal disease. Susceptibility to the development of atypical hemolytic uremic syndrome can be conferred by mutations in various components of or regulatory factors in the complement cascade system. Other genes may play a role in modifying the phenotype.
配列類似性	Contains 9 Sushi (CCP/SCR) domains.
細胞内局在	Secreted.

## 画像



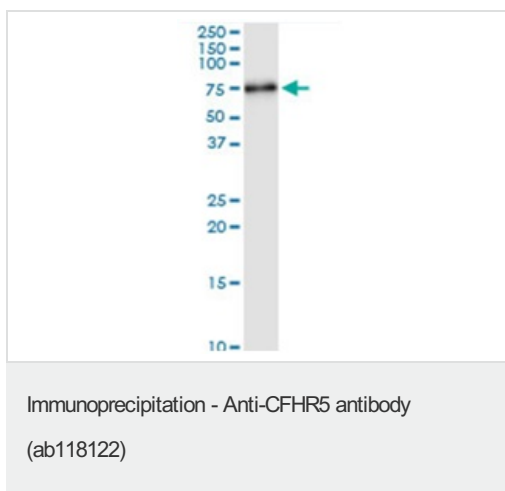
**All lanes :** Anti-CFHR5 antibody (ab118122)  
at 1/1000 dilution

**Lane 1 :** 293T cell line, transfected with  
CFHR5

**Lane 2 :** 293T cell line, non-transfected

Lysates/proteins at 25 µg per lane.

**Predicted band size:** 64 kDa



Immunoprecipitation of CFHR5 transfected  
lysate using ab118122 antibody and Protein A  
Magnetic Beads, immunoblotted with  
ab118122.

**Please note:** All products are "FOR RESEARCH USE ONLY AND ARE NOT INTENDED FOR DIAGNOSTIC OR THERAPEUTIC USE"

## **Our Abpromise to you: Quality guaranteed and expert technical support**

---

- Replacement or refund for products not performing as stated on the datasheet
- Valid for 12 months from date of delivery
- Response to your inquiry within 24 hours
  
- We provide support in Chinese, English, French, German, Japanese and Spanish
- Extensive multi-media technical resources to help you
- We investigate all quality concerns to ensure our products perform to the highest standards

If the product does not perform as described on this datasheet, we will offer a refund or replacement. For full details of the Abpromise, please visit <http://www.abcam.co.jp/abpromise> or contact our technical team.

## **Terms and conditions**

---

- Guarantee only valid for products bought direct from Abcam or one of our authorized distributors