


Product datasheet

Anti-MAP1S antibody ab118111

画像数 2

製品の概要

製品名	Anti-MAP1S antibody
製品の詳細	Mouse monoclonal to MAP1S
アプリケーション	適用あり: WB, ELISA, Sandwich ELISA
種交差性	交差種: Recombinant fragment 交差が予測される動物種: Human 
免疫原	Recombinant fragment, corresponding to amino acids 929-1027 of Human MAP1S with a proprietary tag (NP_060644).
ポジティブ・コントロール	Recombinant Protein.

製品の特性

製品の状態	Liquid
保存方法	Shipped at 4°C. Upon delivery aliquot and store at -20°C or -80°C. Avoid repeated freeze / thaw cycles.
バッファー	pH: 7.20 Constituent: 99% PBS
精製度	Protein A purified
ポリ/モノ	モノクローナル
アイソタイプ	IgG2a
軽鎖の種類	kappa

アプリケーション

Our [Abpromise guarantee](#) covers the use of **ab118111** in the following tested applications.

The application notes include recommended starting dilutions; optimal dilutions/concentrations should be determined by the end user.

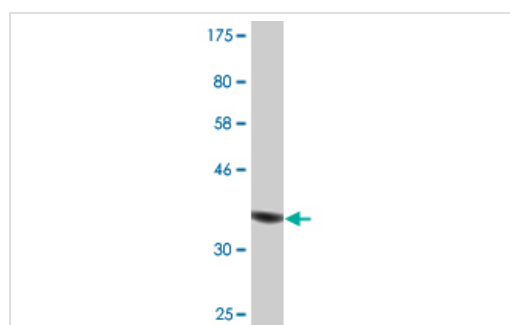
アプリケーション	Abreviews	特記事項
----------	-----------	------

アプリケーション	Abreviews	特記事項
WB		Use a concentration of 1 - 5 µg/ml. Predicted molecular weight: 112 kDa. This antibody has only been tested in WB against the recombinant fragment used as immunogen. We have no data on the detection of endogenous protein.
ELISA		Use at an assay dependent dilution.
Sandwich ELISA		Use a concentration of 10 µg/ml.

ターゲット情報

機能	Microtubule-associated protein that mediates aggregation of mitochondria resulting in cell death and genomic destruction (MAGD). Plays a role in anchoring the microtubule-organizing center to the centrosomes. Binds to DNA. Plays a role in apoptosis. Involved in the formation of microtubule bundles.
組織特異性	Expressed in neurons (at protein level). Expressed in spermatocytes, spermatids and spermatozoa. Expressed in the cerebral cortex. Highly expressed in testis. Moderately expressed in the brain, colon, heart, kidney, liver, lung, placenta, small intestine, spleen and stomach. Weakly expressed in muscle.
配列類似性	Belongs to the MAP1 family.
ドメイン	The N-terminus of the heavy chain associates with the C-terminus of the light chain to form the heterodimer complex (By similarity). Its C-terminal part of the heavy chain interacts with ESR1.
細胞内局在	Nucleus. Cytoplasm > cytosol. Cytoplasm > cytoskeleton. Cytoplasm > cytoskeleton > spindle. Detected in filopodia-like protrusions and synapses (By similarity). Detected in perinuclear punctate network corresponding to mitochondrial aggregates and in the nucleus in cells exhibiting apoptosis. Associated specifically with microtubules stabilized by paclitaxel and colocalizes with RASSF1 isoform A. In interphase cells, shows a diffuse cytoplasmic staining with partial localization to the microtubules. During the different stages of mitosis detected at the spindle microtubules.

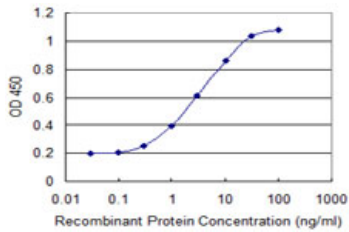
画像



Anti-MAP1S antibody (ab118111) at 5 µg/ml
+ recombinant immunogen at 0.2 µg
Developed using the ECL technique

Predicted band size : 112 kDa

Western blot - Anti-MAP1S antibody (ab118111)



Sandwich ELISA - Anti-MAP1S antibody (ab118111)

ab118111 at 10 µg/ml as a capture antibody.

The detection limit for recombinant tagged

MAP1S is 0.1 ng/ml.

Please note: All products are "FOR RESEARCH USE ONLY AND ARE NOT INTENDED FOR DIAGNOSTIC OR THERAPEUTIC USE"

Our Abpromise to you: Quality guaranteed and expert technical support

- Replacement or refund for products not performing as stated on the datasheet
- Valid for 12 months from date of delivery
- Response to your inquiry within 24 hours
- We provide support in Chinese, English, French, German, Japanese and Spanish
- Extensive multi-media technical resources to help you
- We investigate all quality concerns to ensure our products perform to the highest standards

If the product does not perform as described on this datasheet, we will offer a refund or replacement. For full details of the Abpromise, please visit <http://www.abcam.co.jp/abpromise> or contact our technical team.

Terms and conditions

- Guarantee only valid for products bought direct from Abcam or one of our authorized distributors