


Product datasheet

Anti-CHST5 antibody ab118108

画像数 1

製品の概要

製品名	Anti-CHST5 antibody
製品の詳細	Mouse monoclonal to CHST5
由来種	Mouse
アプリケーション	適用あり: WB
種交差性	交差種: Recombinant fragment 交差が予測される動物種: Human 
免疫原	Recombinant fragment (GSGIGKPIEA FHTSSRNARN VSQAWRHALP FTKILRVQEV CAGALQLLGY RPYVSADQQR DLTLDLVLPR GPDHFSWASP D) corresponding to amino acids 310-391 of Human CHST5 with a proprietary tag (NP_036258). Run BLAST with ExPASy Run BLAST with NCBI
ポジティブ・コントロール	Recombinant Protein

製品の特性

製品の状態	Liquid
保存方法	Shipped at 4°C. Upon delivery aliquot. Store at -20°C or -80°C. Avoid freeze / thaw cycle.
バッファー	pH: 7.20 Constituent: 99% PBS
精製度	Protein A purified
ポリ/モノ	モノクローナル
アイソタイプ	IgG2b
軽鎖の種類	kappa

アプリケーション

Our [Abpromise guarantee](#) covers the use of **ab118108** in the following tested applications.

The application notes include recommended starting dilutions; optimal dilutions/concentrations should be determined by the end user.

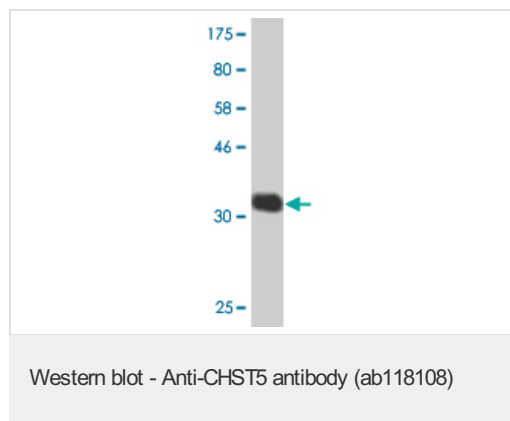
アプリ ケー ション	Abreviews	特記事項
------------------	-----------	------

WB Use a concentration of 1 - 5 µg/ml. Predicted molecular weight: 46 kDa. This antibody has only been tested in WB against the recombinant fragment used as immunogen. We have no data on the detection of endogenous protein.

ターゲット情報

機能	Catalyzes the transfer of sulfate to position 6 of non-reducing N-acetylglucosamine (GlcNAc) residues and O-linked sugars of mucin-type acceptors. Acts on the non-reducing terminal GlcNAc of short carbohydrate substrates. However, it does not transfer sulfate to longer carbohydrate substrates that have poly-N-acetylglucosamine structures. Has no activity toward keratan. Not involved in generating HEV-expressed ligands for L-selectin. Its substrate specificity may be influenced by its subcellular location.
組織特異性	Predominantly expressed in small and large intestines and colon. Weakly expressed in lymphocytes. Not expressed in other tissues. Down-regulated in colonic adenocarcinomas.
配列類似性	Belongs to the sulfotransferase 1 family. Gal/GlcNAc/GalNAc subfamily.
細胞内局在	Golgi apparatus membrane. Golgi membrane, early secretory pathway.

画像



Anti-CHST5 antibody (ab118108) at 5 µg/ml +
Immunogen at 0.2 µg

Developed using the ECL technique.

Predicted band size: 46 kDa

Please note: All products are "FOR RESEARCH USE ONLY AND ARE NOT INTENDED FOR DIAGNOSTIC OR THERAPEUTIC USE"

Our Abpromise to you: Quality guaranteed and expert technical support

- Replacement or refund for products not performing as stated on the datasheet
- Valid for 12 months from date of delivery
- Response to your inquiry within 24 hours
- We provide support in Chinese, English, French, German, Japanese and Spanish
- Extensive multi-media technical resources to help you
- We investigate all quality concerns to ensure our products perform to the highest standards

If the product does not perform as described on this datasheet, we will offer a refund or replacement. For full details of the Abpromise, please visit <http://www.abcam.co.jp/abpromise> or contact our technical team.

Terms and conditions

- Guarantee only valid for products bought direct from Abcam or one of our authorized distributors