

Product datasheet

Anti-MAPK11 antibody [1C2] ab117949

画像数 3

製品の概要

製品名	Anti-MAPK11 antibody [1C2]
製品の詳細	Mouse monoclonal [1C2] to MAPK11
由来種	Mouse
アプリケーション	適用あり: WB, ICC/IF
種交差性	交差種: Human
免疫原	Recombinant full length Human MAPK11 produced in HEK293T cells (NP_002742).
ポジティブ・コントロール	HEK293T cell lysate transfected with pCMV6-ENTRY MAPK11; COS7 cells transiently transfected by pCMV6-ENTRY MAPK11; HT29 cells.
特記事項	Dilute in PBS (pH7.3) before use. Stable for 12 months from date of receipt.

製品の特性

製品の状態	Liquid
保存方法	Shipped at 4°C. Upon delivery aliquot and store at -20°C. Avoid repeated freeze / thaw cycles.
バッファー	pH: 7.30 Preservative: 0.02% Sodium azide Constituents: 49% PBS, 1% BSA, 50% Glycerol
精製度	Protein G purified
特記事項 (精製)	ab117949 is purified from Mouse ascites fluid by affinity chromatography.
ポリ/モノ	モノクローナル
クローン名	1C2
アイソタイプ	IgG1

アプリケーション

Our [Abpromise guarantee](#) covers the use of **ab117949** in the following tested applications.

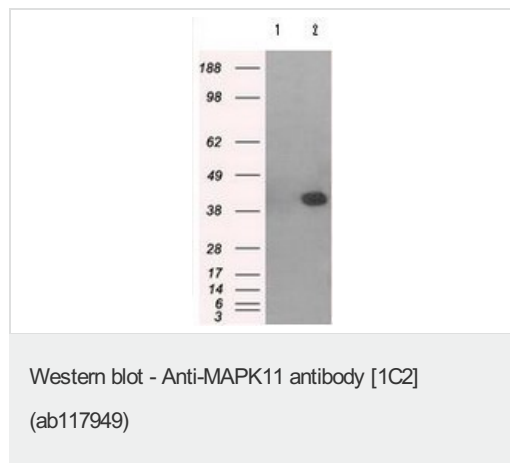
The application notes include recommended starting dilutions; optimal dilutions/concentrations should be determined by the end user.

アプリケーション	Abreviews	特記事項
WB		1/2000. Predicted molecular weight: 41 kDa.
ICC/IF		1/100.

ターゲット情報

機能	Kinase involved in a signal transduction pathway that is activated by changes in the osmolarity of the extracellular environment, by cytokines, or by environmental stress. Phosphorylates preferentially transcription factor ATF2.
組織特異性	Highest levels in the brain and heart. Also expressed in the placenta, lung, liver, skeletal muscle, kidney and pancreas.
配列類似性	Belongs to the protein kinase superfamily. CMGC Ser/Thr protein kinase family. MAP kinase subfamily. Contains 1 protein kinase domain.
ドメイン	The TXY motif contains the threonine and tyrosine residues whose phosphorylation activates the MAP kinases.
翻訳後修飾	Dually phosphorylated on Thr-180 and Tyr-182, which activates the enzyme.

画像



All lanes : Anti-MAPK11 antibody [1C2] (ab117949) at 1/2000 dilution

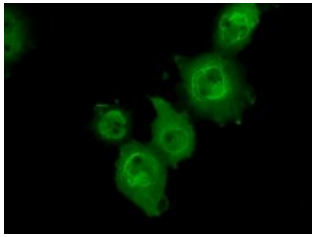
Lane 1 : HEK293T cell lysate transfected with pCMV6-ENTRY control cDNA

Lane 2 : HEK293T cell lysate transfected with pCMV6-ENTRY MAPK11 cDNA

Lysates/proteins at 5 µg per lane.

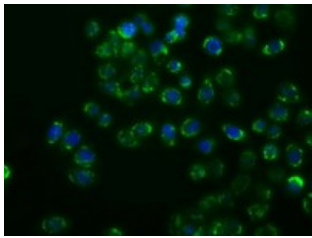
Predicted band size: 41 kDa

HEK293T cell lysates were generated from transient transfection of the cDNA clone (RC200912)



ab117949, at 1/100, staining MAPK11 in COS7 cells transiently transfected by pCMV6-ENTRY MAPK11 by Immunofluorescence.

Immunocytochemistry/ Immunofluorescence - Anti-MAPK11 antibody [1C2] (ab117949)



ab117949, at 1/100, staining MAPK11 in HT29 cells by Immunofluorescence.

Immunocytochemistry/ Immunofluorescence - Anti-MAPK11 antibody [1C2] (ab117949)

Please note: All products are "FOR RESEARCH USE ONLY AND ARE NOT INTENDED FOR DIAGNOSTIC OR THERAPEUTIC USE"

Our Abpromise to you: Quality guaranteed and expert technical support

- Replacement or refund for products not performing as stated on the datasheet
- Valid for 12 months from date of delivery
- Response to your inquiry within 24 hours
- We provide support in Chinese, English, French, German, Japanese and Spanish
- Extensive multi-media technical resources to help you
- We investigate all quality concerns to ensure our products perform to the highest standards

If the product does not perform as described on this datasheet, we will offer a refund or replacement. For full details of the Abpromise, please visit <http://www.abcam.co.jp/abpromise> or contact our technical team.

Terms and conditions

- Guarantee only valid for products bought direct from Abcam or one of our authorized distributors