

## Product datasheet

# Anti-PKLR antibody [1A5] ab117943

画像数 2

### 製品の概要

製品名	Anti-PKLR antibody [1A5]
製品の詳細	Mouse monoclonal [1A5] to PKLR
由来種	Mouse
アプリケーション	適用あり: WB
種交差性	交差種: Human
免疫原	Recombinant full length Human PKLR (NP_000289) produced in HEK293T cell.
ポジティブ・コントロール	Extracts from HeLa, HT29 and COS7 cells; HEK293T cells transfected with the pCMV6-ENTRY PKLR
特記事項	Dilute in PBS (pH 7.3) before use.

### 製品の特性

製品の状態	Liquid
保存方法	Shipped at 4°C. Upon delivery aliquot and store at -20°C. Avoid repeated freeze / thaw cycles.
バッファー	pH: 7.30 Preservative: 0.02% Sodium azide Constituents: PBS, 1% BSA, 50% Glycerol
精製度	Protein G purified
特記事項 (精製)	Purified from Mouse ascites fluids by affinity chromatography.
ポリ/モノ	モノクローナル
クローン名	1A5
アイソタイプ	IgG1

### アプリケーション

Our [Abpromise guarantee](#) covers the use of **ab117943** in the following tested applications.

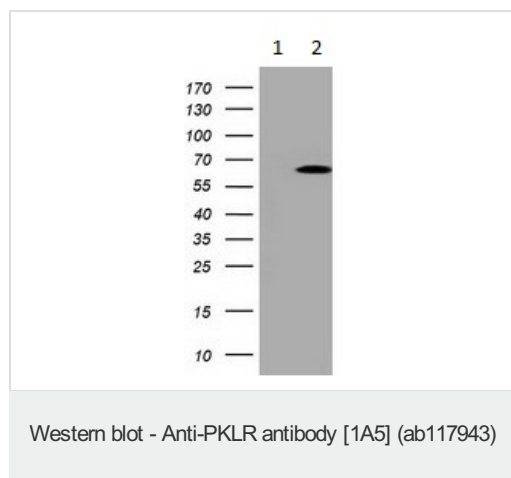
The application notes include recommended starting dilutions; optimal dilutions/concentrations should be determined by the end user.

アプリケーション	Abreviews	特記事項
WB		1/500. Predicted molecular weight: 62 kDa.

## ターゲット情報

<b>機能</b>	Plays a key role in glycolysis.
<b>パスウェイ</b>	Carbohydrate degradation; glycolysis; pyruvate from D-glyceraldehyde 3-phosphate: step 5/5.
<b>関連疾患</b>	<p>Defects in PKLR are the cause of pyruvate kinase hyperactivity (PKHYP) [MIM:102900]; also known as high red cell ATP syndrome. This autosomal dominant phenotype is characterized by increase of red blood cell ATP.</p> <p>Defects in PKLR are the cause of pyruvate kinase deficiency of red cells (PKRD) [MIM:266200]. A frequent cause of hereditary non-spherocytic hemolytic anemia. Clinically, pyruvate kinase-deficient patients suffer from a highly variable degree of chronic hemolysis, ranging from severe neonatal jaundice and fatal anemia at birth, severe transfusion-dependent chronic hemolysis, moderate hemolysis with exacerbation during infection, to a fully compensated hemolysis without apparent anemia.</p>
<b>配列類似性</b>	Belongs to the pyruvate kinase family.

## 画像



**All lanes** : Anti-PKLR antibody [1A5] (ab117943) at 1/500 dilution

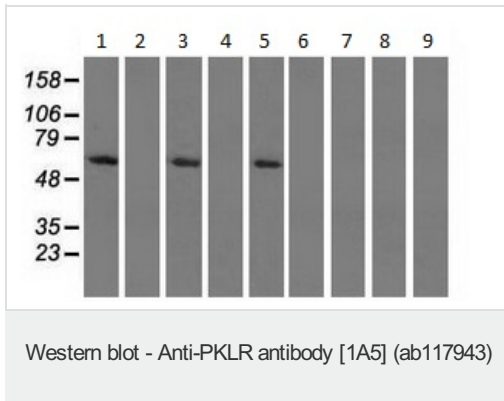
**Lane 1** : HEK293T cells were transfected with the pCMV6-ENTRY control cDNA for 48 hrs and lysed.

**Lane 2** : HEK293T cells were transfected with the pCMV6-ENTRY PKLR cDNA for 48 hrs and lysed

Lysates/proteins at 5 µg per lane.

**Predicted band size:** 62 kDa

HEK293T cell lysates were generated from transient transfection of the cDNA clone (RC206455)



**All lanes :** Anti-PKLR antibody [1A5]

(ab117943) at 1/500 dilution

**Lane 1 :** HepG2 cell extract

**Lane 2 :** HeLa cell extract

**Lane 3 :** HT29 cell extract

**Lane 4 :** A549 cell extract

**Lane 5 :** COS7 cell extract

**Lane 6 :** Jurkat cell extract

**Lane 7 :** MDCK cell extract

**Lane 8 :** PC12 cell extract

**Lane 9 :** MCF7 cell extract

Lysates/proteins at 35 µg per lane.

**Predicted band size:** 62 kDa

HEK293T cell lysates were generated from transient transfection of the cDNA clone (RC206455)

**Please note:** All products are "FOR RESEARCH USE ONLY AND ARE NOT INTENDED FOR DIAGNOSTIC OR THERAPEUTIC USE"

### Our Abpromise to you: Quality guaranteed and expert technical support

- Replacement or refund for products not performing as stated on the datasheet
- Valid for 12 months from date of delivery
- Response to your inquiry within 24 hours
- We provide support in Chinese, English, French, German, Japanese and Spanish
- Extensive multi-media technical resources to help you
- We investigate all quality concerns to ensure our products perform to the highest standards

If the product does not perform as described on this datasheet, we will offer a refund or replacement. For full details of the Abpromise, please visit <http://www.abcam.co.jp/abpromise> or contact our technical team.

### Terms and conditions

- Guarantee only valid for products bought direct from Abcam or one of our authorized distributors