

## Product datasheet

# Anti-KRT23 antibody [2B4-3B5] ab117590

画像数 3

### 製品の概要

製品名	Anti-KRT23 antibody [2B4-3B5]
製品の詳細	Mouse monoclonal [2B4-3B5] to KRT23
由来種	Mouse
アプリケーション	<b>適用あり:</b> WB, ELISA, IHC-P, ICC/IF
種交差性	<b>交差種:</b> Human
免疫原	Recombinant Human KRT23
ポジティブ・コントロール	Human brain cerebellum tissue, HeLa cells and HeLa nuclear extract

### 製品の特性

製品の状態	Liquid
保存方法	Shipped at 4°C. Store at -20°C or -80°C. Avoid freeze / thaw cycle. Store undiluted.
バッファー	pH: 7.20 Constituent: 99% PBS
精製度	Protein A purified
ポリ/モノ	モノクローナル
クローン名	2B4-3B5
アイソタイプ	IgG2a
軽鎖の種類	kappa

### アプリケーション

Our [Abpromise guarantee](#) covers the use of **ab117590** in the following tested applications.

The application notes include recommended starting dilutions; optimal dilutions/concentrations should be determined by the end user.

アプリケーション	Abreviews	特記事項
WB		1/500 - 1/1000. Predicted molecular weight: 48 kDa.
ELISA		Use at an assay dependent concentration.

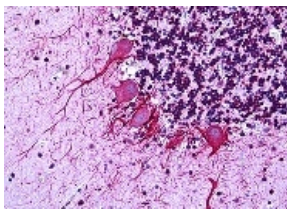
アプリケーション	Abreviews	特記事項
IHC-P		Use a concentration of 5 µg/ml.
ICC/IF		Use a concentration of 10 µg/ml.

## ターゲット情報

### 配列類似性

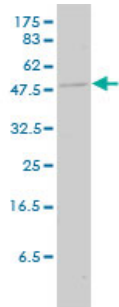
Belongs to the intermediate filament family.

## 画像



Formalin-fixed, paraffin-embedded Human brain cerebellum tissue labelled with ab117590 at 5 µg/ml.

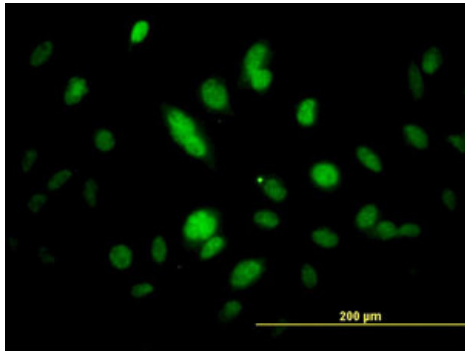
Immunohistochemistry (Formalin/PFA-fixed paraffin-embedded sections) - Anti-KRT23 antibody [2B4-3B5] (ab117590)



Anti-KRT23 antibody [2B4-3B5] (ab117590) at 1/500 dilution + HeLa nuclear extract

**Predicted band size: 48 kDa**

Western blot - Anti-KRT23 antibody [2B4-3B5] (ab117590)



Immunofluorescence analysis of HeLa cells  
labelled with ab117590 at 10 μg/ml

Immunocytochemistry/ Immunofluorescence - Anti-  
KRT23 antibody [2B4-3B5] (ab117590)

**Please note:** All products are "FOR RESEARCH USE ONLY AND ARE NOT INTENDED FOR DIAGNOSTIC OR THERAPEUTIC USE"

### Our Abpromise to you: Quality guaranteed and expert technical support

- Replacement or refund for products not performing as stated on the datasheet
- Valid for 12 months from date of delivery
- Response to your inquiry within 24 hours
- We provide support in Chinese, English, French, German, Japanese and Spanish
- Extensive multi-media technical resources to help you
- We investigate all quality concerns to ensure our products perform to the highest standards

If the product does not perform as described on this datasheet, we will offer a refund or replacement. For full details of the Abpromise, please visit <http://www.abcam.co.jp/abpromise> or contact our technical team.

### Terms and conditions

- Guarantee only valid for products bought direct from Abcam or one of our authorized distributors