

## Product datasheet

# Anti-DMT1 antibody [4C6] ab117544

★★★★★ 1 Abreviews [画像数 3](#)

### 製品の概要

製品名	Anti-DMT1 antibody [4C6]
製品の詳細	Mouse monoclonal [4C6] to DMT1
由来種	Mouse
アプリケーション	<b>適用あり:</b> WB, IHC-P, Sandwich ELISA, ICC/IF
種交差性	<b>交差種:</b> Human
免疫原	Recombinant Human DMT1 protein (NP_000608.1).
ポジティブ・コントロール	Human kidney tissue.

### 製品の特性

製品の状態	Liquid
保存方法	Shipped at 4°C. Upon delivery aliquot and store at -20°C. Avoid freeze / thaw cycles.
バッファー	pH: 7.20 Constituent: 99% PBS
精製度	Protein A purified
ポリ/モノ	モノクローナル
クローン名	4C6
アイソタイプ	IgG2a
軽鎖の種類	kappa

### アプリケーション

Our [Abpromise guarantee](#) covers the use of **ab117544** in the following tested applications.

The application notes include recommended starting dilutions; optimal dilutions/concentrations should be determined by the end user.

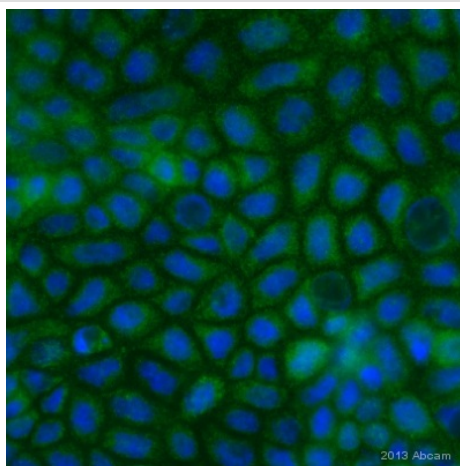
アプリケーション	Abreviews	特記事項
WB		Use at an assay dependent concentration. Predicted molecular weight: 62 kDa.
IHC-P		Use a concentration of 5 µg/ml.

アプリケーション	Abreviews	特記事項
Sandwich ELISA		Use at an assay dependent concentration.
ICC/IF	★★★★★	1/1000.

## ターゲット情報

<b>機能</b>	Important in metal transport, in particular iron. Can also transport manganese, cobalt, cadmium, nickel, vanadium and lead. Involved in apical iron uptake into duodenal enterocytes. Involved in iron transport from acidified endosomes into the cytoplasm of erythroid precursor cells. May play an important role in hepatic iron accumulation and tissue iron distribution.
<b>組織特異性</b>	Ubiquitously expressed. Isoform 1 is highly expressed in brain. Isoform 2 is highly expressed in spleen, thymus and pancreas. Isoform 3 and isoform 4 are abundantly expressed in duodenum and kidney.
<b>関連疾患</b>	Defects in SLC11A2 are a cause of hypochromic microcytic anemia (HCMA) [MIM:206100]. The disease is characterized by an abnormal hemoglobin content in the erythrocytes which are reduced in size. It may be hereditary or acquired. Mutations in SLC11A2 are associated with progressive liver iron overload and normal to moderately elevated serum ferritin levels.
<b>配列類似性</b>	Belongs to the NRAMP family.
<b>翻訳後修飾</b>	Ubiquitinated by WWP2.
<b>細胞内局在</b>	Endosome membrane.

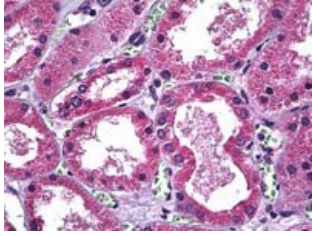
## 画像



ICC/IF image of DMT1 staining on Caco2 cells using ab117544 (1:1000). The cells were fixed with paraformaldehyde and permeabilized using 0.1% TritonX in 0.1% PBS. The cells were blocked using 10 % donkey serum for 1 hour at 24°C. ab117544 was diluted 1:1000 using 0.1% TritonX with 0.1x PBS- 10% Donkeys and incubated with the slides at 4°C for 24 hours. The secondary antibody used was donkey polyclonal against mouse IgG conjugated to Alexa Fluor 488 (undiluted)

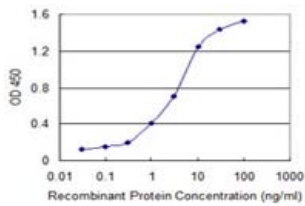
Immunocytochemistry/ Immunofluorescence - Anti-DMT1 antibody [4C6] (ab117544)

This image is courtesy of an abreview submitted by Dr. Ruma Raha-Chowdhury, Cambridge University, United Kingdom.



ab117544, at 5 µg/ml, staining DMT1 in Formalin-fixed, Paraffin-embedded Human Kidney tissue by Immunohistochemistry.

Immunohistochemistry (Formalin/PFA-fixed paraffin-embedded sections) - Anti-DMT1 antibody [4C6] (ab117544)



ELISA Image: the detection limit for recombinant proprietary tagged DMT1 is 0.03 ng/ml as a capture antibody.

Sandwich ELISA - Anti-DMT1 antibody [4C6] (ab117544)

**Please note:** All products are "FOR RESEARCH USE ONLY AND ARE NOT INTENDED FOR DIAGNOSTIC OR THERAPEUTIC USE"

### Our Abpromise to you: Quality guaranteed and expert technical support

- Replacement or refund for products not performing as stated on the datasheet
- Valid for 12 months from date of delivery
- Response to your inquiry within 24 hours
- We provide support in Chinese, English, French, German, Japanese and Spanish
- Extensive multi-media technical resources to help you
- We investigate all quality concerns to ensure our products perform to the highest standards

If the product does not perform as described on this datasheet, we will offer a refund or replacement. For full details of the Abpromise, please visit <http://www.abcam.co.jp/abpromise> or contact our technical team.

### Terms and conditions

- Guarantee only valid for products bought direct from Abcam or one of our authorized distributors