

## Product datasheet

# Anti-KA1 antibody ab115472

画像数 3

### 製品の概要

製品名	Anti-KA1 antibody
製品の詳細	Rabbit polyclonal to KA1
由来種	Rabbit
アプリケーション	適用あり: WB, ELISA, IHC-P
種交差性	交差種: Human 交差が予測される動物種: Mouse, Rat
免疫原	Synthetic peptide containing a 19 amino acid sequence from the C terminal region of Human KA1.
ポジティブ・コントロール	Human adrenal and Human brain (cerebellum) tissues; Rat brain lysate.

### 製品の特性

製品の状態	Liquid
保存方法	Shipped at 4°C. Store at +4°C short term (1-2 weeks). Store at -20°C or -80°C. Avoid freeze / thaw cycle.
バッファー	Preservative: 0.02% Sodium azide Constituent: 99% PBS
精製度	Protein A purified
ポリ/モノ	ポリクローナル
アイソタイプ	IgG

### アプリケーション

Our [Abpromise guarantee](#) covers the use of **ab115472** in the following tested applications.

The application notes include recommended starting dilutions; optimal dilutions/concentrations should be determined by the end user.

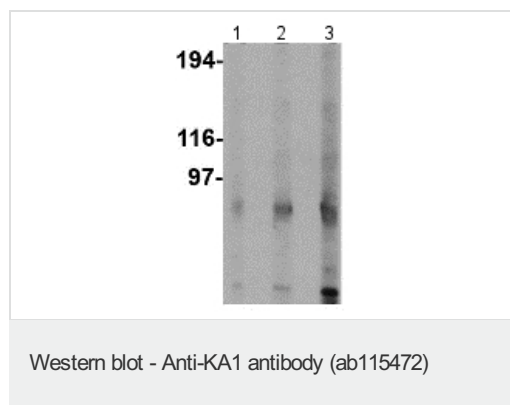
アプリケーション	Abreviews	特記事項
WB		Use a concentration of 0.5 - 1 µg/ml. Predicted molecular weight: 107 kDa.

アプリケーション	Abreviews	特記事項
ELISA		Use at an assay dependent concentration.
IHC-P		Use a concentration of 5 µg/ml. Perform heat mediated antigen retrieval with citrate buffer pH 6 before commencing with IHC staining protocol.

## ターゲット情報

機能	Receptor for glutamate. L-glutamate acts as an excitatory neurotransmitter at many synapses in the central nervous system. The postsynaptic actions of Glu are mediated by a variety of receptors that are named according to their selective agonists.
配列類似性	Belongs to the glutamate-gated ion channel (TC 1.A.10.1) family. GRIK4 subfamily.
細胞内局在	Cell membrane. Cell junction > synapse > postsynaptic cell membrane.

## 画像



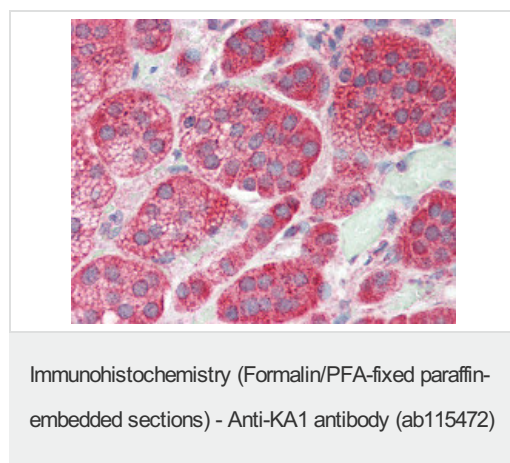
**Lane 1** : Anti-KA1 antibody (ab115472) at 0.5 µg/ml

**Lane 2** : Anti-KA1 antibody (ab115472) at 1 µg/ml

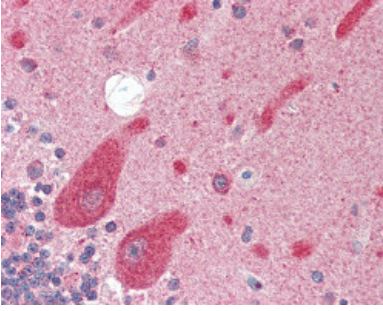
**Lane 3** : Anti-KA1 antibody (ab115472) at 2 µg/ml

**All lanes** : Rat brain lysate

**Predicted band size:** 107 kDa



ab115472 at 5ug/ml staining KA1 in Formalin-fixed, Paraffin-embedded Human adrenal tissue by Immunohistochemistry, followed by biotinylated secondary antibody, alkaline phosphatase-streptavidin and chromogen.



ab115472 at 5ug/ml staining KA1 in Formalin-fixed, Paraffin-embedded Human brain (cerebellum) tissue by Immunohistochemistry, followed by biotinylated secondary antibody, alkaline phosphatase-streptavidin and chromogen.

Immunohistochemistry (Formalin/PFA-fixed paraffin-embedded sections) - Anti-KA1 antibody (ab115472)

**Please note:** All products are "FOR RESEARCH USE ONLY AND ARE NOT INTENDED FOR DIAGNOSTIC OR THERAPEUTIC USE"

### **Our Abpromise to you: Quality guaranteed and expert technical support**

- Replacement or refund for products not performing as stated on the datasheet
- Valid for 12 months from date of delivery
- Response to your inquiry within 24 hours
- We provide support in Chinese, English, French, German, Japanese and Spanish
- Extensive multi-media technical resources to help you
- We investigate all quality concerns to ensure our products perform to the highest standards

If the product does not perform as described on this datasheet, we will offer a refund or replacement. For full details of the Abpromise, please visit <http://www.abcam.co.jp/abpromise> or contact our technical team.

### **Terms and conditions**

- Guarantee only valid for products bought direct from Abcam or one of our authorized distributors