




Product datasheet

Anti-ARIH1 antibody ab115300

画像数 2

製品の概要

製品名	Anti-ARIH1 antibody
製品の詳細	Goat polyclonal to ARIH1
由来種	Goat
アプリケーション	適用あり: WB, ELISA, IHC-P
種交差性	交差種: Human 交差が予測される動物種: Mouse, Cow, Xenopus laevis, Zebrafish 
免疫原	Synthetic peptide: HEGYEKDLWEYIED by a Cysteine residue linker, corresponding to C terminal amino acids 544-557 of Human ARIH1 <div style="text-align: right;">  Run BLAST with  Run BLAST with </div>
ポジティブ・コントロール	Human Adrenal tissue; U937 lysate

製品の特性

製品の状態	Liquid
保存方法	Shipped at 4°C. Upon delivery aliquot and store at -20°C. Avoid freeze / thaw cycles.
バッファー	pH: 7.30 Preservative: 0.02% Sodium azide Constituents: 98% Tris buffered saline, 0.5% BSA
精製度	Immunogen affinity purified
ポリ/モノ	ポリクローナル
アイソタイプ	IgG

アプリケーション

Our [Abpromise guarantee](#) covers the use of **ab115300** in the following tested applications.

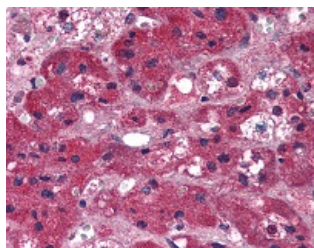
The application notes include recommended starting dilutions; optimal dilutions/concentrations should be determined by the end user.

アプリケーション	Abreviews	特記事項
WB		Use a concentration of 0.2 - 1 µg/ml. Predicted molecular weight: 64 kDa.
ELISA		1/32000.
IHC-P		Use a concentration of 5 µg/ml. Perform heat mediated antigen retrieval with citrate buffer pH 6 before commencing with IHC staining protocol.

ターゲット情報

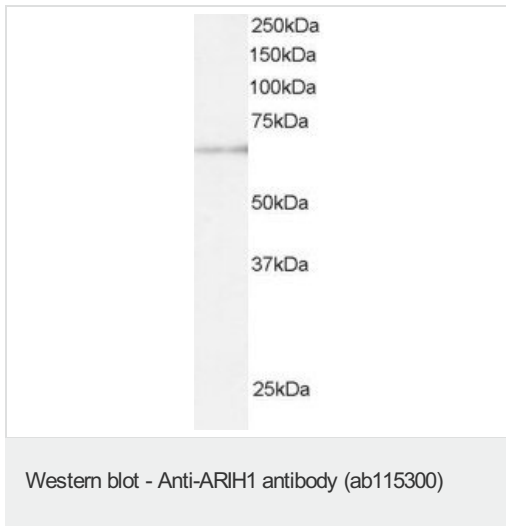
機能	Might act as an E3 ubiquitin-protein ligase, or as part of the E3 complex, which accepts ubiquitin from specific E2 ubiquitin-conjugating enzymes, such as UBE2L3/UBCM4, and then transfers it to substrates.
組織特異性	Widely expressed.
配列類似性	Belongs to the RBR family. Ariadne subfamily. Contains 1 IBR-type zinc finger. Contains 2 RING-type zinc fingers.
細胞内局在	Cytoplasm. Mainly cytoplasmic.

画像



ab115300, at 5 µg/ml, staining ARIH1 in formalin-fixed, paraffin-embedded Human Adrenal tissue by Immunohistochemistry, using a biotinylated anti-goat IgG secondary antibody, alkaline phosphatase-streptavidin and chromogen.

Immunohistochemistry (Formalin/PFA-fixed paraffin-embedded sections) - Anti-ARIH1 antibody (ab115300)



Anti-ARIH1 antibody (ab115300) at 0.5 µg/ml
+ U937 lysate (in RIPA buffer) at 30 µg

Developed using the ECL technique.

Predicted band size: 64 kDa

Primary incubated for 1 hour.

Please note: All products are "FOR RESEARCH USE ONLY AND ARE NOT INTENDED FOR DIAGNOSTIC OR THERAPEUTIC USE"

Our Abpromise to you: Quality guaranteed and expert technical support

- Replacement or refund for products not performing as stated on the datasheet
- Valid for 12 months from date of delivery
- Response to your inquiry within 24 hours
- We provide support in Chinese, English, French, German, Japanese and Spanish
- Extensive multi-media technical resources to help you
- We investigate all quality concerns to ensure our products perform to the highest standards

If the product does not perform as described on this datasheet, we will offer a refund or replacement. For full details of the Abpromise, please visit <http://www.abcam.co.jp/abpromise> or contact our technical team.

Terms and conditions

- Guarantee only valid for products bought direct from Abcam or one of our authorized distributors