


Product datasheet

Anti-HP1 gamma antibody ab115221

画像数 2

製品の概要

製品名	Anti-HP1 gamma antibody
製品の詳細	Goat polyclonal to HP1 gamma
由来種	Goat
アプリケーション	適用あり: WB, IHC-P
種交差性	交差種: Human 交差が予測される動物種: Mouse, Rat, Horse, Chicken, Cow, Dog, Pig, Xenopus laevis 
免疫原	Synthetic peptide: EAFLNSQKAGKEKD conjugated to KLH, corresponding to internal sequence amino acids 74-87 of Human HP1 gamma Run BLAST with Run BLAST with
ポジティブ・コントロール	Human placenta tissue, A431 lysate

製品の特性

製品の状態	Liquid
保存方法	Shipped at 4°C. Upon delivery aliquot and store at -20°C. Avoid repeated freeze / thaw cycles.
バッファー	Preservative: 0.02% Sodium azide Constituents: 99% Tris buffered saline, 0.5% BSA
精製度	Immunogen affinity purified
ポリ/モノ	ポリクローナル
アイソタイプ	IgG

アプリケーション

Our [Abpromise guarantee](#) covers the use of **ab115221** in the following tested applications.

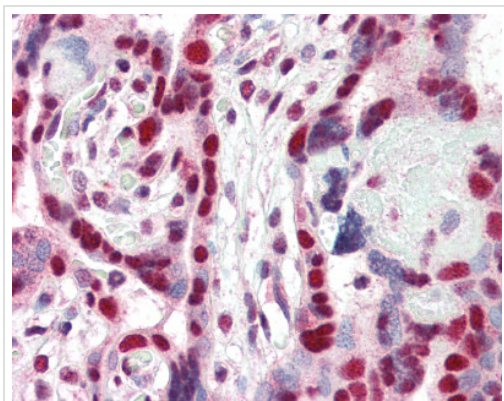
The application notes include recommended starting dilutions; optimal dilutions/concentrations should be determined by the end user.

アプリケーション	Abreviews	特記事項
WB		Use a concentration of 0.3 - 1 µg/ml. Predicted molecular weight: 21 kDa.
IHC-P		Use a concentration of 2.5 µg/ml. Perform heat mediated antigen retrieval with citrate buffer pH 6 before commencing with IHC staining protocol.

ターゲット情報

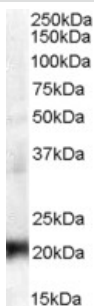
機能	Seems to be involved in transcriptional silencing in heterochromatin-like complexes. Recognizes and binds histone H3 tails methylated at 'Lys-9', leading to epigenetic repression. May contribute to the association of the heterochromatin with the inner nuclear membrane through its interaction with lamin B receptor (LBR). Involved in the formation of functional kinetochore through interaction with MIS12 complex proteins.
配列類似性	Contains 2 chromo domains.
翻訳後修飾	Phosphorylated by PIM1. Phosphorylated during interphase and possibly hyper-phosphorylated during mitosis.
細胞内局在	Nucleus. Associates with euchromatin and is largely excluded from constitutive heterochromatin. May be associated with microtubules and mitotic poles during mitosis.

画像



Human placenta (formalin fixed, paraffin embedded) stained with ab115221 at 2.5 ug/ml followed by biotinylated anti Goat IgG secondary antibody, alkaline phosphatase streptavidin and chromogen.

Immunohistochemistry (Formalin/PFA-fixed paraffin-embedded sections) - Anti-HP1 gamma antibody (ab115221)



Western blot - Anti-HP1 gamma antibody
(ab115221)

Anti-HP1 gamma antibody (ab115221) at 0.3
µg/ml + A431 lysate in RIPA buffer at 35 µg

Predicted band size: 21 kDa

Primary incubation was 1 hour. Detected by
chemiluminescence.

Please note: All products are "FOR RESEARCH USE ONLY AND ARE NOT INTENDED FOR DIAGNOSTIC OR THERAPEUTIC USE"

Our Abpromise to you: Quality guaranteed and expert technical support

- Replacement or refund for products not performing as stated on the datasheet
- Valid for 12 months from date of delivery
- Response to your inquiry within 24 hours
- We provide support in Chinese, English, French, German, Japanese and Spanish
- Extensive multi-media technical resources to help you
- We investigate all quality concerns to ensure our products perform to the highest standards

If the product does not perform as described on this datasheet, we will offer a refund or replacement. For full details of the Abpromise, please visit <http://www.abcam.co.jp/abpromise> or contact our technical team.

Terms and conditions

- Guarantee only valid for products bought direct from Abcam or one of our authorized distributors