

Product datasheet

Anti-Mad2L1 antibody [4D2] ab114036

画像数 2

製品の概要

製品名	Anti-Mad2L1 antibody [4D2]
製品の詳細	Mouse monoclonal [4D2] to Mad2L1
由来種	Mouse
アプリケーション	適用あり: WB, ICC/IF
種交差性	交差種: Human
免疫原	Recombinant full length Human Mad2L1 produced in HEK293T cells (NP_002349).
ポジティブ・コントロール	HEK293T cell lysate transfected with or pCMV6-ENTRY Mad2L1; COS7 cells transiently transfected by pCMV6-ENTRY Mad2L1.
特記事項	Stable for 12 months from date of receipt.

製品の特性

製品の状態	Liquid
保存方法	Shipped at 4°C. Upon delivery aliquot and store at -20°C. Avoid repeated freeze / thaw cycles.
バッファー	pH: 7.30 Preservative: 0.02% Sodium azide Constituents: 48% PBS, 50% Glycerol, 1% BSA
精製度	Protein A purified
特記事項(精製)	ab114036 is purified from Mouse ascites fluids by affinity chromatography.
ポリ/モノ	モノクローナル
クローン名	4D2
アイソタイプ	IgG2a

アプリケーション

Our [Abpromise guarantee](#) covers the use of **ab114036** in the following tested applications.

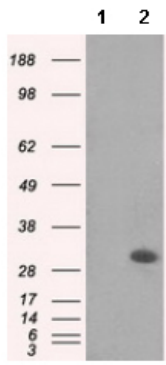
The application notes include recommended starting dilutions; optimal dilutions/concentrations should be determined by the end user.

アプリケーション	Abreviews	特記事項
WB		1/1000. Predicted molecular weight: 24 kDa.
ICC/IF		1/100.

ターゲット情報

機能	Component of the spindle-assembly checkpoint that prevents the onset of anaphase until all chromosomes are properly aligned at the metaphase plate. Required for the execution of the mitotic checkpoint which monitors the process of kinetochore-spindle attachment and inhibits the activity of the anaphase promoting complex by sequestering CDC20 until all chromosomes are aligned at the metaphase plate.
配列類似性	Belongs to the MAD2 family. Contains 1 HORMA domain.
ドメイン	The protein has two highly different native conformations, an inactive open conformation that cannot bind CDC20 and that predominates in cytosolic monomers, and an active closed conformation. The protein in the closed conformation preferentially dimerizes with another molecule in the open conformation, but can also form a dimer with a molecule in the closed conformation. Formation of a heterotetrameric core complex containing two molecules of MAD1L1 and of MAD2L1 in the closed conformation promotes binding of another molecule of MAD2L1 in the open conformation and the conversion of the open to the closed form, and thereby promotes interaction with CDC20.
翻訳後修飾	Phosphorylated on multiple serine residues. The level of phosphorylation varies during the cell cycle and is highest during mitosis. Phosphorylation abolishes interaction with MAD1L1 and reduces interaction with CDC20.
細胞内局在	Nucleus. Chromosome > centromere > kinetochore. Cytoplasm. Recruited by MAD1L1 to unattached kinetochores (Probable). Recruited to the nuclear pore complex by TPR during interphase. Recruited to kinetochores in late prometaphase after BUB1, CENPF, BUB1B and CENPE. Kinetochore association requires the presence of NEK2. Kinetochore association is repressed by UBD.

画像



Western blot - Anti-Mad2L1 antibody [4D2]
(ab114036)

All lanes : Anti-Mad2L1 antibody [4D2]
(ab114036) at 1/1000 dilution

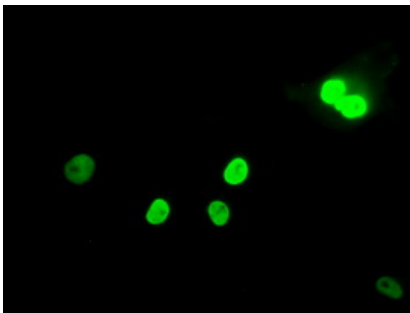
Lane 1 : HEK293T cell lysate transfected with
the pCMV6-ENTRY control cDNA

Lane 2 : HEK293T cell lysate transfected with
the pCMV6-ENTRY Mad2L1 cDNA

Lysates/proteins at 5 µg per lane.

Predicted band size: 24 kDa

HEK293T cell lysates were generated from
transient transfection of the cDNA clone
(RC200386)



Flow Cytometry - Anti-Mad2L1 antibody [4D2]
(ab114036)

Immunofluorescent staining of COS7 cells
transiently transfected by pCMV6-ENTRY
Mad2L1, using ab114036 at 1/100.

Please note: All products are "FOR RESEARCH USE ONLY AND ARE NOT INTENDED FOR DIAGNOSTIC OR THERAPEUTIC USE"

Our Abpromise to you: Quality guaranteed and expert technical support

- Replacement or refund for products not performing as stated on the datasheet
- Valid for 12 months from date of delivery
- Response to your inquiry within 24 hours
- We provide support in Chinese, English, French, German, Japanese and Spanish
- Extensive multi-media technical resources to help you
- We investigate all quality concerns to ensure our products perform to the highest standards

If the product does not perform as described on this datasheet, we will offer a refund or replacement. For full details of the Abpromise, please visit <http://www.abcam.co.jp/abpromise> or contact our technical team.

Terms and conditions

- Guarantee only valid for products bought direct from Abcam or one of our authorized distributors