

Product datasheet

Anti-PKC epsilon antibody [1B4] ab114034

1 References [画像数 9](#)

製品の概要

製品名	Anti-PKC epsilon antibody [1B4]
製品の詳細	Mouse monoclonal [1B4] to PKC epsilon
由来種	Mouse
アプリケーション	適用あり: WB, IHC-P, Flow Cyt, ICC/IF
種交差性	交差種: Dog, Human, Monkey
免疫原	Recombinant full length Human PKC epsilon produced in HEK293T cells (NP_005391).
ポジティブ・コントロール	Human kidney, prostate, prostate carcinoma and lymphoma tissues; HEK293T cell lysate transfected with pCMV6-ENTRY PKC epsilon cDNA; HepG2, HeLa, COS7, MDCK, HT29 and A549 cell extracts; Transfected COS7 cells transiently transfected by pCMV6-ENTRY PKC epsilon; HeLa and Jurkat cells.
特記事項	Dilute in PBS (pH7.3) before use. Stable for 12 months from date of receipt.

製品の特性

製品の状態	Liquid
保存方法	Shipped at 4°C. Upon delivery aliquot and store at -20°C. Avoid repeated freeze / thaw cycles.
バッファー	pH: 7.30 Preservative: 0.02% Sodium azide Constituents: 48% PBS, 50% Glycerol, 1% BSA
精製度	Protein A purified
特記事項(精製)	ab114034 is purified from Mouse ascites fluid by affinity chromatography.
ポリ/モノ	モノクローナル
クローン名	1B4
アイソタイプ	IgG2b

アプリケーション

Our [Abpromise guarantee](#) covers the use of **ab114034** in the following tested applications.

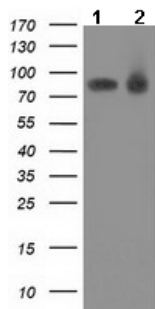
The application notes include recommended starting dilutions; optimal dilutions/concentrations should be determined by the end user.

アプリケーション	Abreviews	特記事項
WB		1/500 - 1/2000. Predicted molecular weight: 84 kDa.
IHC-P		1/150.
Flow Cyt		1/100. ab170192 - Mouse monoclonal IgG2b, is suitable for use as an isotype control with this antibody.
ICC/IF		1/100.

ターゲット情報

機能	This is calcium-independent, phospholipid-dependent, serine- and threonine-specific enzyme. PKC is activated by diacylglycerol which in turn phosphorylates a range of cellular proteins. PKC also serves as the receptor for phorbol esters, a class of tumor promoters.
配列類似性	Belongs to the protein kinase superfamily. AGC Ser/Thr protein kinase family. PKC subfamily. Contains 1 AGC-kinase C-terminal domain. Contains 1 C2 domain. Contains 2 phorbol-ester/DAG-type zinc fingers. Contains 1 protein kinase domain.
ドメイン	The C1 domain, containing the phorbol ester/DAG-type region 1 (C1A) and 2 (C1B), is the diacylglycerol sensor and the C2 domain is a non-calcium binding domain.
翻訳後修飾	Phosphorylation on Thr-566 by PDPK1 triggers autophosphorylation on Ser-729.

画像



Western blot - Anti-PKC epsilon antibody [1B4]
(ab114034)

All lanes : Anti-PKC epsilon antibody [1B4]

(ab114034) at 1/500 dilution

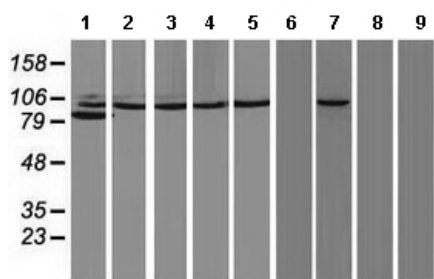
Lane 1 : HEK293T cell lysate transfected with pCMV6-ENTRY control cDNA

Lane 2 : HEK293T cell lysate transfected with pCMV6-ENTRY PKC epsilon cDNA

Lysates/proteins at 5 µg per lane.

Predicted band size: 84 kDa

HEK293T cell lysates were generated from transient transfection of the cDNA clone (RC217702)



Western blot - Anti-PKC epsilon antibody [1B4]
(ab114034)

All lanes : Anti-PKC epsilon antibody [1B4]

(ab114034) at 1/500 dilution

Lane 1 : HepG2 cell extract

Lane 2 : HeLa cell extract

Lane 3 : HT29 cell extract

Lane 4 : A549 cell extract

Lane 5 : COS7 cell extract

Lane 6 : Jurkat cell extracts

Lane 7 : MDCK cell extract

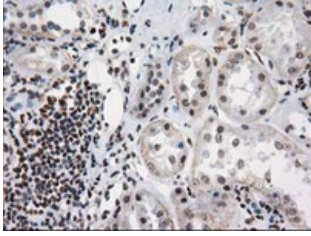
Lane 8 : PC12 cell extract

Lane 9 : MCF7 cell extract

Lysates/proteins at 35 µg per lane.

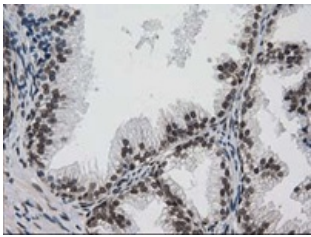
Predicted band size: 84 kDa

HEK293T cell lysates were generated from transient transfection of the cDNA clone (RC217702)



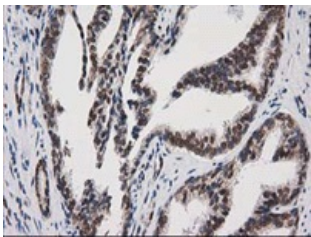
ab114034 at 1/150 dilution staining PKC epsilon in Paraffin-embedded Human Kidney tissue by Immunohistochemistry.

Immunohistochemistry (Formalin/PFA-fixed paraffin-embedded sections) - Anti-PKC epsilon antibody [1B4] (ab114034)



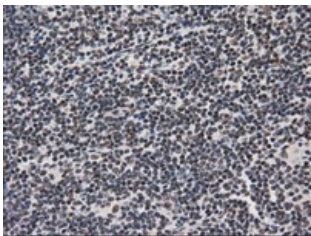
ab114034 at 1/150 dilution staining PKC epsilon in Paraffin-embedded Human Prostate tissue by Immunohistochemistry.

Immunohistochemistry (Formalin/PFA-fixed paraffin-embedded sections) - Anti-PKC epsilon antibody [1B4] (ab114034)



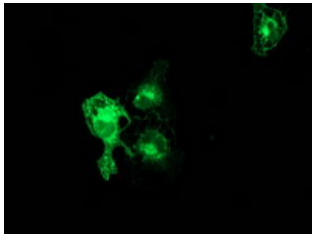
ab114034 at 1/150 dilution staining PKC epsilon in Paraffin-embedded Human Prostate carcinoma tissue by Immunohistochemistry.

Immunohistochemistry (Formalin/PFA-fixed paraffin-embedded sections) - Anti-PKC epsilon antibody [1B4] (ab114034)



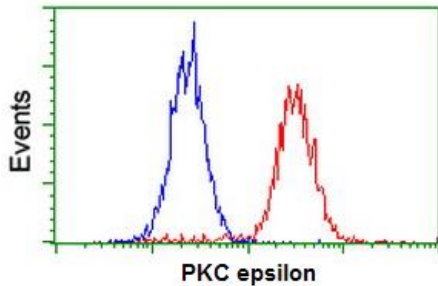
ab114034 at 1/150 dilution staining PKC epsilon in Paraffin-embedded Human Lymphoma tissue by Immunohistochemistry.

Immunohistochemistry (Formalin/PFA-fixed paraffin-embedded sections) - Anti-PKC epsilon antibody [1B4] (ab114034)



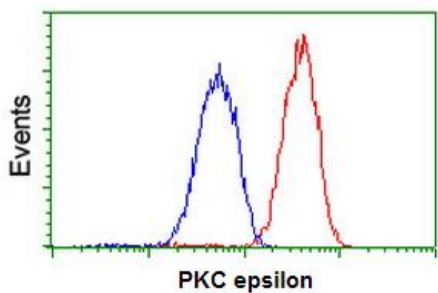
ab114034 at 1/100 dilution staining PKC epsilon in COS7 cells transiently transfected with pCMV6-ENTRY PKC epsilon by Immunofluorescence.

Immunocytochemistry/ Immunofluorescence - Anti-PKC epsilon antibody [1B4] (ab114034)



ab114034 at 1/100 dilution staining PKC epsilon in HeLa cells by Flow cytometry (Red) compared to a nonspecific negative control antibody (Blue).

Flow Cytometry - Anti-PKC epsilon antibody [1B4] (ab114034)



ab114034 at 1/100 dilution staining PKC epsilon in Jurkat cells by Flow cytometry (Red) compared to a nonspecific negative control antibody (Blue).

Flow Cytometry - Anti-PKC epsilon antibody [1B4] (ab114034)

Please note: All products are "FOR RESEARCH USE ONLY AND ARE NOT INTENDED FOR DIAGNOSTIC OR THERAPEUTIC USE"

Our Abpromise to you: Quality guaranteed and expert technical support

- Replacement or refund for products not performing as stated on the datasheet
- Valid for 12 months from date of delivery
- Response to your inquiry within 24 hours
- We provide support in Chinese, English, French, German, Japanese and Spanish
- Extensive multi-media technical resources to help you
- We investigate all quality concerns to ensure our products perform to the highest standards

If the product does not perform as described on this datasheet, we will offer a refund or replacement. For full details of the Abpromise, please visit <http://www.abcam.co.jp/abpromise> or contact our technical team.

Terms and conditions

- Guarantee only valid for products bought direct from Abcam or one of our authorized distributors