

Product datasheet

Anti-alpha 1 Fetoprotein antibody [OTI2A9] ab114028

画像数 6

製品の概要

製品名	Anti-alpha 1 Fetoprotein antibody [OTI2A9]
製品の詳細	Mouse monoclonal [OTI2A9] to alpha 1 Fetoprotein
由来種	Mouse
アプリケーション	適用あり: WB, IHC-P, Flow Cyt, ICC/IF
種交差性	交差種: Dog, Human, Monkey
免疫原	Recombinant full length Human alpha 1 Fetoprotein produced in HEK293T cells (NP_001125).
ポジティブ・コントロール	Human liver tissue; HEK293T cell lysate transfected with pCMV6-ENTRY alpha 1 Fetoprotein cDNA; HepG2, HeLa, MCF7, MDCK, Jurkat, COS7 and A549 cell extracts; HEK293T cells transfected with pCMV6-ENTRY alpha 1 Fetoprotein overexpress plasmid; Jurkat cells; COS7 cells transiently transfected by pCMV6-ENTRY alpha 1 Fetoprotein.
特記事項	<p>Dilute in PBS (pH7.3) before use. Stable for 12 months from date of receipt.</p> <p>The clone number has been updated from 2A9 to OTI2A9, both clone numbers name the same clone.</p> <p>Abcam is committed to meeting high standards of ethical manufacturing and as such, we will be discontinuing this product, which has been generated by the ascites method, within the next year. We are sorry for any inconvenience this may cause. If you would like help finding an alternative product, please do not hesitate to contact our scientific support team.</p>

製品の特性

製品の状態	Liquid
保存方法	Shipped at 4°C. Upon delivery aliquot and store at -20°C. Avoid repeated freeze / thaw cycles.
バッファー	<p>pH: 7.30</p> <p>Preservative: 0.02% Sodium azide</p> <p>Constituents: 48% PBS, 50% Glycerol, 1% BSA</p>
精製度	Protein A purified
特記事項(精製)	ab114028 is purified from Mouse ascites fluid by affinity chromatography.
ポリ/モノ	モノクローナル
クローン名	OTI2A9
アイソタイプ	IgG2b

アプリケーション

Our [Abpromise guarantee](#) covers the use of **ab114028** in the following tested applications.

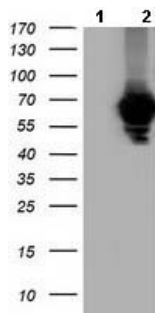
The application notes include recommended starting dilutions; optimal dilutions/concentrations should be determined by the end user.

アプリケーション	Abreviews	特記事項
WB		1/200 - 1/500. Predicted molecular weight: 69 kDa.
IHC-P		1/150.
Flow Cyt		1/100. ab170192 - Mouse monoclonal IgG2b, is suitable for use as an isotype control with this antibody.
ICC/IF		1/100.

ターゲット情報

機能	Binds copper, nickel, and fatty acids as well as, and bilirubin less well than, serum albumin. Only a small percentage (less than 2%) of the human AFP shows estrogen-binding properties.
組織特異性	Plasma. Synthesized by the fetal liver and yolk sac.
配列類似性	Belongs to the ALB/AFP/VDB family. Contains 3 albumin domains.
発生段階	Occurs in the plasma of fetuses more than 4 weeks old, reaches the highest levels during the 12th-16th week of gestation, and drops to trace amounts after birth. The serum level in adults is usually less than 40 ng/ml. AFP occurs also at high levels in the plasma and ascitic fluid of adults with hepatoma.
翻訳後修飾	Independent studies suggest heterogeneity of the N-terminal sequence of the mature protein and of the cleavage site of the signal sequence. Sulfated.
細胞内局在	Secreted.

画像



Western blot - Anti-alpha 1 Fetoprotein antibody
[OTI2A9] (ab114028)

All lanes : Anti-alpha 1 Fetoprotein antibody
[OTI2A9] (ab114028) at 1/200 dilution

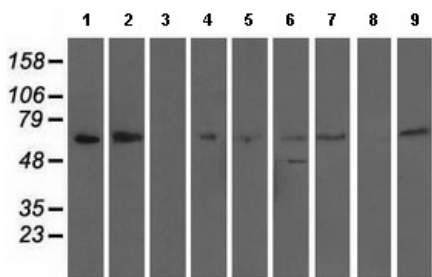
Lane 1 : HEK293T cell lysate transfected with
pCMV6-ENTRY control cDNA

Lane 2 : HEK293T cell lysate transfected with
pCMV6-ENTRY alpha 1 Fetoprotein cDNA

Lysates/proteins at 5 µg per lane.

Predicted band size: 69 kDa

HEK293T cell lysates were generated from
transient transfection of the cDNA clone
(RC206622)



Western blot - Anti-alpha 1 Fetoprotein antibody
[OTI2A9] (ab114028)

All lanes : Anti-alpha 1 Fetoprotein antibody
[OTI2A9] (ab114028) at 1/200 dilution

Lane 1 : HepG2 cell extract

Lane 2 : HeLa cell extract

Lane 3 : HT29 cell extract

Lane 4 : A549 cell extract

Lane 5 : COS7 cell extract

Lane 6 : Jurkat cell extract

Lane 7 : MDCK cell extract

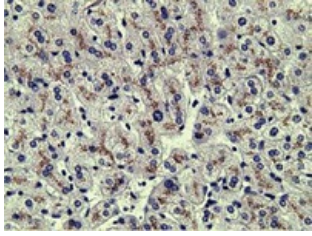
Lane 8 : PC12 cell extract

Lane 9 : MCF7 cell extract

Lysates/proteins at 35 µg per lane.

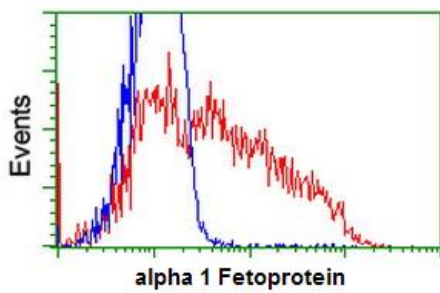
Predicted band size: 69 kDa

HEK293T cell lysates were generated from
transient transfection of the cDNA clone
(RC206622)



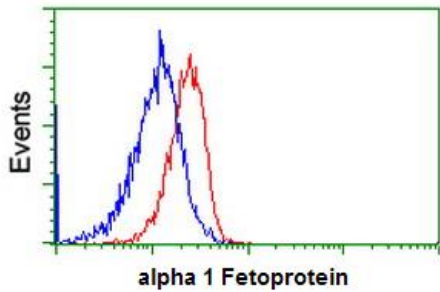
ab114028 at 1/150 dilution staining alpha 1 Fetoprotein in Paraffin-embedded Human Liver tissue by Immunohistochemistry.

Immunohistochemistry (Formalin/PFA-fixed paraffin-embedded sections) - Anti-alpha 1 Fetoprotein antibody [OT12A9] (ab114028)



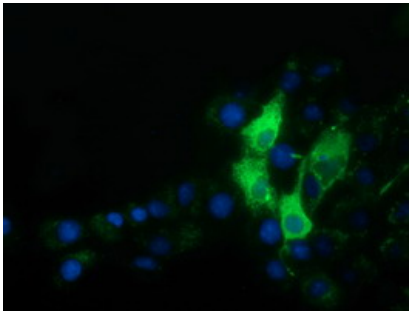
ab114028 at 1/100 dilution staining alpha 1 Fetoprotein in HEK293T cells transfected with either pCMV6-ENTRY alpha 1 Fetoprotein overexpress plasmid (Red) or empty vector control plasmid (Blue) by flow cytometry.

Flow Cytometry - Anti-alpha 1 Fetoprotein antibody [OT12A9] (ab114028)



ab114028 at 1/100 dilution staining alpha 1 Fetoprotein in Jurkat cells by Flow cytometry (Red) compared to a nonspecific negative control antibody (Blue).

Flow Cytometry - Anti-alpha 1 Fetoprotein antibody [OT12A9] (ab114028)



ab114028 at 1/100 dilution staining alpha 1 Fetoprotein in COS7 cells transiently transfected with pCMV6-ENTRY alpha 1 Fetoprotein by Immunofluorescence.

Immunocytochemistry/ Immunofluorescence - Anti-alpha 1 Fetoprotein antibody [OTI2A9] (ab114028)

Please note: All products are "FOR RESEARCH USE ONLY AND ARE NOT INTENDED FOR DIAGNOSTIC OR THERAPEUTIC USE"

Our Abpromise to you: Quality guaranteed and expert technical support

- Replacement or refund for products not performing as stated on the datasheet
- Valid for 12 months from date of delivery
- Response to your inquiry within 24 hours
- We provide support in Chinese, English, French, German, Japanese and Spanish
- Extensive multi-media technical resources to help you
- We investigate all quality concerns to ensure our products perform to the highest standards

If the product does not perform as described on this datasheet, we will offer a refund or replacement. For full details of the Abpromise, please visit <http://www.abcam.co.jp/abpromise> or contact our technical team.

Terms and conditions

- Guarantee only valid for products bought direct from Abcam or one of our authorized distributors