


Product datasheet

Anti-CYB5R3 antibody ab113222

画像数 1

製品の概要

製品名	Anti-CYB5R3 antibody
製品の詳細	Rabbit polyclonal to CYB5R3
アプリケーション	適用あり: WB
種交差性	交差種: Human 交差が予測される動物種: Mouse, Rat, Rabbit, Horse, Guinea pig, Cow, Cat, Dog, Pig 
免疫原	Synthetic peptide corresponding to a region within C terminal amino acids 191-240 (IRAIMKDPDD HTVCHLLFAN QTEKDILLRP ELEELRNKHS ARFKLWYTLD) of Human CYB5R3 (NP_000389). <a href="#">Run BLAST with ExPASy</a> <a href="#">Run BLAST with NCBI</a>
ポジティブ・コントロール	HT1080 cell lysate.

製品の特性

製品の状態	Liquid
保存方法	Shipped at 4°C. Upon delivery aliquot and store at -20°C. Avoid repeated freeze / thaw cycles.
バッファー	Constituents: 98% PBS, 2% Sucrose
精製度	Immunogen affinity purified
ポリ/モノ	ポリクローナル
アイソタイプ	IgG

アプリケーション

Our [Abpromise guarantee](#) covers the use of **ab113222** in the following tested applications.

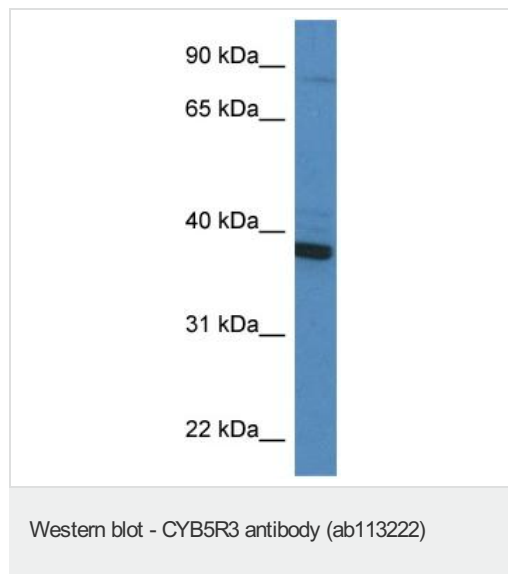
The application notes include recommended starting dilutions; optimal dilutions/concentrations should be determined by the end user.

アプリケーション	Abreviews	特記事項
WB		Use a concentration of 1 µg/ml. Predicted molecular weight: 34 kDa. Good results were obtained when blocked with 5% non-fat dry milk in 0.05% PBS-T.

## ターゲット情報

機能	Desaturation and elongation of fatty acids, cholesterol biosynthesis, drug metabolism, and, in erythrocyte, methemoglobin reduction.
組織特異性	Isoform 2 is expressed at late stages of erythroid maturation.
関連疾患	Defects in CYB5R3 are the cause of methemoglobinemia CYB5R3-related (METHB-CYB5R3) [MIM:250800]. A form of methemoglobinemia, a hematologic disease characterized by the presence of excessive amounts of methemoglobin in blood cells, resulting in decreased oxygen carrying capacity of the blood, cyanosis and hypoxia. There are two types of methemoglobinemia CYB5R3-related. In type 1, the defect affects the soluble form of the enzyme, is restricted to red blood cells, and causes well-tolerated methemoglobinemia. In type 2, the defect affects both the soluble and microsomal forms of the enzyme and is thus generalized, affecting red cells, leukocytes and all body tissues. Type 2 methemoglobinemia is associated with mental deficiency and other neurologic symptoms.
配列類似性	Belongs to the flavoprotein pyridine nucleotide cytochrome reductase family. Contains 1 FAD-binding FR-type domain.
細胞内局在	Endoplasmic reticulum membrane. Mitochondrion outer membrane and Cytoplasm. Produces the soluble form found in erythrocytes.

## 画像



Anti-CYB5R3 antibody (ab113222) at 1 µg/ml  
+ HT1080 cell lysate at 10 µg

**Predicted band size : 34 kDa**

**Please note:** All products are "FOR RESEARCH USE ONLY AND ARE NOT INTENDED FOR DIAGNOSTIC OR THERAPEUTIC USE"

## Our Abpromise to you: Quality guaranteed and expert technical support

- Replacement or refund for products not performing as stated on the datasheet
- Valid for 12 months from date of delivery
- Response to your inquiry within 24 hours
- We provide support in Chinese, English, French, German, Japanese and Spanish
- Extensive multi-media technical resources to help you

- We investigate all quality concerns to ensure our products perform to the highest standards

If the product does not perform as described on this datasheet, we will offer a refund or replacement. For full details of the Abpromise, please visit <http://www.abcam.co.jp/abpromise> or contact our technical team.

### **Terms and conditions**

---

- Guarantee only valid for products bought direct from Abcam or one of our authorized distributors