

Product datasheet

Anti-STIM2 antibody ab112963

画像数 1

製品の概要

製品名	Anti-STIM2 antibody
製品の詳細	Rabbit polyclonal to STIM2
由来種	Rabbit
アプリケーション	適用あり: WB
種交差性	交差種: Human
免疫原	Synthetic peptide conjugated to KLH, corresponding to a region within N terminal amino acids 97-127 of Human STIM2 (NP_001162589.1, NP_065911.3, NP_001162588.1).
ポジティブ・コントロール	UM cell line lysates.

製品の特性

製品の状態	Liquid
保存方法	Shipped at 4°C. Store at 4°C (up to 6 months). Store at -20°C long term.
バッファー	Preservative: 0.09% Sodium azide Constituent: 99% PBS
精製度	Immunogen affinity purified
特記事項(精製)	ab112963 is purified through a protein A column, followed by peptide affinity purification.
ポリ/モノ	ポリクローナル
アイソタイプ	IgG

アプリケーション

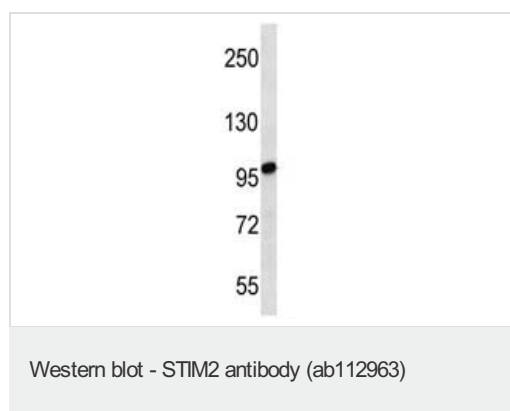
Our [Abpromise guarantee](#) covers the use of **ab112963** in the following tested applications.

The application notes include recommended starting dilutions; optimal dilutions/concentrations should be determined by the end user.

アプリケーション	Abreviews	特記事項
WB		1/100 - 1/500. Predicted molecular weight: 84 kDa.

機能	Functions as a highly sensitive Ca(2+) sensor in the endoplasmic reticulum which activates both store-operated and store-independent Ca(2+)-influx. Regulates basal cytosolic and endoplasmic reticulum Ca(2+) concentrations. Upon mild variations of the endoplasmic reticulum Ca(2+) concentration, translocates from the endoplasmic reticulum to the plasma membrane where it probably activates the Ca(2+) release-activated Ca(2+) (CRAC) channels ORAI1, ORAI2 and ORAI3. May inhibit STIM1-mediated Ca(2+) influx.
組織特異性	Expressed in all tissues and tumor cell lines examined.
配列類似性	Contains 1 EF-hand domain. Contains 1 SAM (sterile alpha motif) domain.
翻訳後修飾	Glycosylated. Phosphorylated predominantly on Ser residues.
細胞内局在	Endoplasmic reticulum membrane. Dynamically translocates from a uniform endoplasmic reticulum distribution to punctual endoplasmic reticulum-plasma membrane junctions in response to decrease in endoplasmic reticulum Ca(2+) concentration.

画像



Anti-STIM2 antibody (ab112963) at 1/100 dilution + UM cell line lysate at 35 µg

Predicted band size: 84 kDa

Please note: All products are "FOR RESEARCH USE ONLY AND ARE NOT INTENDED FOR DIAGNOSTIC OR THERAPEUTIC USE"

Our Abpromise to you: Quality guaranteed and expert technical support

- Replacement or refund for products not performing as stated on the datasheet
- Valid for 12 months from date of delivery
- Response to your inquiry within 24 hours
- We provide support in Chinese, English, French, German, Japanese and Spanish
- Extensive multi-media technical resources to help you
- We investigate all quality concerns to ensure our products perform to the highest standards

If the product does not perform as described on this datasheet, we will offer a refund or replacement. For full details of the Abpromise, please visit <http://www.abcam.co.jp/abpromise> or contact our technical team.

Terms and conditions

- Guarantee only valid for products bought direct from Abcam or one of our authorized distributors