


Product datasheet

Anti-ATP5D antibody ab111735

画像数 2

製品の概要

| | |
|--------------|--|
| 製品名 | Anti-ATP5D antibody |
| 製品の詳細 | Rabbit polyclonal to ATP5D |
| アプリケーション | 適用あり: IHC-P, ICC/IF |
| 種交差性 | 交差種: Human 交差が予測される動物種: Rat  |
| 免疫原 | Synthetic peptide derived from an internal sequence of Human ATP5D. |
| ポジティブ・コントロール | A549 cells; Human lung carcinoma tissue. |

製品の特性

| | |
|--------|--|
| 製品の状態 | Liquid |
| 保存方法 | Shipped at 4°C. Store at -20°C. Stable for 12 months at -20°C. |
| バッファー | pH: 7.40 Preservative: 0.02% Sodium azide Constituents: 49% PBS, 50% Glycerol, 0.88% Sodium chloride |
| 精製度 | Immunogen affinity purified |
| ポリ/モノ | ポリクローナル |
| アイソタイプ | IgG |

アプリケーション

Our [Abpromise guarantee](#) covers the use of **ab111735** in the following tested applications.

The application notes include recommended starting dilutions; optimal dilutions/concentrations should be determined by the end user.

| アプリケーション | Abreviews | 特記事項 |
|----------|-----------|--|
| IHC-P | | 1/50 - 1/100. Perform heat mediated antigen retrieval with citrate buffer pH 6 before commencing with IHC staining protocol. |
| ICC/IF | | 1/100 - 1/500. |

ターゲット情報

機能

Mitochondrial membrane ATP synthase (F(1)F(0) ATP synthase or Complex V) produces ATP from ADP in the presence of a proton gradient across the membrane which is generated by electron transport complexes of the respiratory chain. F-type ATPases consist of two structural domains, F(1) - containing the extramembraneous catalytic core, and F(0) - containing the membrane proton channel, linked together by a central stalk and a peripheral stalk. During catalysis, ATP turnover in the catalytic domain of F(1) is coupled via a rotary mechanism of the central stalk subunits to proton translocation. Part of the complex F(1) domain and of the central stalk which is part of the complex rotary element. Rotation of the central stalk against the surrounding alpha(3)beta(3) subunits leads to hydrolysis of ATP in three separate catalytic sites on the beta subunits.

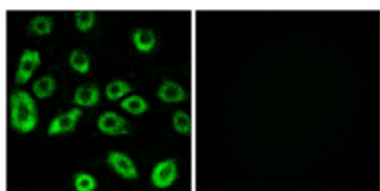
配列類似性

Belongs to the ATPase epsilon chain family.

細胞内局在

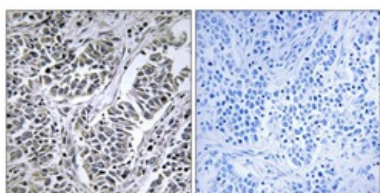
Mitochondrion. Mitochondrion inner membrane.

画像



ab111735 at 1/100 dilution staining ATP5D in A549 cells by Immunofluorescence. The image on the right is treated with the synthesized peptide.

Immunocytochemistry/ Immunofluorescence - ATP5D antibody (ab111735)



ab111735 at 1/50 dilution staining ATP5D in paraffin-embedded Human Lung carcinoma tissue by Immunohistochemistry. The image on the right is treated with the synthesized peptide.

Immunohistochemistry (Formalin/PFA-fixed paraffin-embedded sections) - ATP5D antibody (ab111735)

Please note: All products are "FOR RESEARCH USE ONLY AND ARE NOT INTENDED FOR DIAGNOSTIC OR THERAPEUTIC USE"

Our Abpromise to you: Quality guaranteed and expert technical support

- Replacement or refund for products not performing as stated on the datasheet
- Valid for 12 months from date of delivery
- Response to your inquiry within 24 hours
- We provide support in Chinese, English, French, German, Japanese and Spanish

- Extensive multi-media technical resources to help you
- We investigate all quality concerns to ensure our products perform to the highest standards

If the product does not perform as described on this datasheet, we will offer a refund or replacement. For full details of the Abpromise, please visit <http://www.abcam.co.jp/abpromise> or contact our technical team.

Terms and conditions

- Guarantee only valid for products bought direct from Abcam or one of our authorized distributors