

Product datasheet

Anti-NMDAR1 (phospho S890) antibody ab111566

画像数 2

製品の概要

製品名	Anti-NMDAR1 (phospho S890) antibody
製品の詳細	Rabbit polyclonal to NMDAR1 (phospho S890)
由来種	Rabbit
特異性	ab111566 detects endogenous levels of NMDAR1 only when phosphorylated at serine 890.
アプリケーション	適用あり: IHC-P, ICC/IF
種交差性	交差種: Human 交差が予測される動物種: Mouse, Rat ▲
免疫原	Synthetic phosphopeptide derived from Human NMDAR1 around the phosphorylation site of Serine 890 (A-S-S ^P -F-K).
ポジティブ・コントロール	A549 cells; Human brain tissue.

製品の特性

製品の状態	Liquid
保存方法	Shipped at 4°C. Store at -20°C. Stable for 12 months at -20°C.
バッファー	pH: 7.40 Preservative: 0.02% Sodium azide Constituents: 49% PBS, 50% Glycerol, 0.88% Sodium chloride
精製度	Immunogen affinity purified
特記事項(精製)	ab111566 was affinity-purified from rabbit antiserum by affinity-chromatography using epitope-specific phosphopeptide. The antibody against non-phosphopeptide was removed by chromatography using non-phosphopeptide corresponding to the phosphorylation.
ポリモノ	ポリクローナル
アイソタイプ	IgG

アプリケーション

Our [Abpromise guarantee](#) covers the use of **ab111566** in the following tested applications.

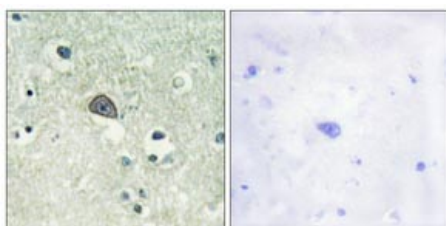
The application notes include recommended starting dilutions; optimal dilutions/concentrations should be determined by the end user.

アプリケーション	Abreviews	特記事項
IHC-P		1/50 - 1/100. Perform heat mediated antigen retrieval with citrate buffer pH 6 before commencing with IHC staining protocol.
ICC/IF		1/100 - 1/500.

ターゲット情報

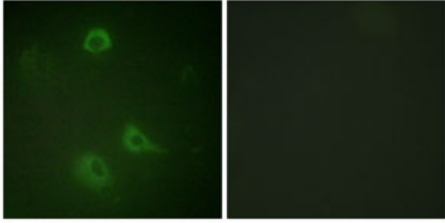
機能	NMDA receptor subtype of glutamate-gated ion channels with high calcium permeability and voltage-dependent sensitivity to magnesium. Mediated by glycine. This protein plays a key role in synaptic plasticity, synaptogenesis, excitotoxicity, memory acquisition and learning. It mediates neuronal functions in glutamate neurotransmission. Is involved in the cell surface targeting of NMDA receptors.
配列類似性	Belongs to the glutamate-gated ion channel (TC 1.A.10.1) family. NR1/GRIN1 subfamily.
翻訳後修飾	NMDA is probably regulated by C-terminal phosphorylation of an isoform of NR1 by PKC. Dephosphorylated on Ser-897 probably by protein phosphatase 2A (PPP2CB). Its phosphorylated state is influenced by the formation of the NMDAR-PPP2CB complex and the NMDAR channel activity.
細胞内局在	Cell membrane. Cell junction > synapse > postsynaptic cell membrane. Cell junction > synapse > postsynaptic cell membrane > postsynaptic density. Enriched in post-synaptic plasma membrane and post-synaptic densities.

画像



ab111566, at 1/50 dilution, staining NMDAR1 in paraffin-embedded Human brain tissue by Immunohistochemistry, in the presence (right panel) or absence (left panel) of immunising peptide.

Immunohistochemistry (Formalin/PFA-fixed paraffin-embedded sections) - NMDAR1 (phospho S890) antibody (ab111566)



ab111566, at 1/100 dilution, staining NMDAR1 in A549 cells by Immunofluorescence, in the presence (right panel) or absence (left panel) of immunising peptide.

Immunocytochemistry/ Immunofluorescence -
NMDAR1 (phospho S890) antibody (ab111566)

Please note: All products are "FOR RESEARCH USE ONLY AND ARE NOT INTENDED FOR DIAGNOSTIC OR THERAPEUTIC USE"

Our Abpromise to you: Quality guaranteed and expert technical support

- Replacement or refund for products not performing as stated on the datasheet
- Valid for 12 months from date of delivery
- Response to your inquiry within 24 hours
- We provide support in Chinese, English, French, German, Japanese and Spanish
- Extensive multi-media technical resources to help you
- We investigate all quality concerns to ensure our products perform to the highest standards

If the product does not perform as described on this datasheet, we will offer a refund or replacement. For full details of the Abpromise, please visit <http://www.abcam.co.jp/abpromise> or contact our technical team.

Terms and conditions

- Guarantee only valid for products bought direct from Abcam or one of our authorized distributors