


Product datasheet

Anti-MRPL13 antibody ab110065

画像数 2

製品の概要

製品名	Anti-MRPL13 antibody
製品の詳細	Rabbit polyclonal to MRPL13
由来種	Rabbit
アプリケーション	適用あり: WB, IHC-P
種交差性	交差種: Human 交差が予測される動物種: Mouse, Rat 
免疫原	Synthetic peptide derived from C-terminal of Human MRPL13.
ポジティブ・コントロール	Human breast carcinoma tissue; A549 cell extract.

製品の特性

製品の状態	Liquid
保存方法	Shipped at 4°C. Store at -20°C. Stable for 12 months at -20°C.
バッファー	pH: 7.40 Preservative: 0.02% Sodium azide Constituents: PBS, 0.88% Sodium chloride, 50% Glycerol
精製度	Immunogen affinity purified
特記事項(精製)	ab110065 was affinity-purified from rabbit antiserum by affinity-chromatography using epitope-specific immunogen.
ポリ/モノ	ポリクローナル
アイソタイプ	IgG

アプリケーション

Our [Abpromise guarantee](#) covers the use of **ab110065** in the following tested applications.

The application notes include recommended starting dilutions; optimal dilutions/concentrations should be determined by the end user.

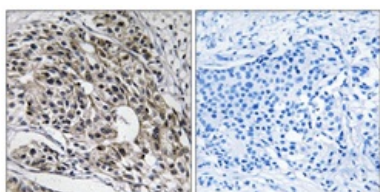
アプリケーション	Abreviews	特記事項
WB		1/500 - 1/1000. Predicted molecular weight: 21 kDa.
IHC-P		1/50 - 1/100. Perform heat mediated antigen retrieval with citrate buffer pH 6 before commencing with IHC staining protocol.

ターゲット情報

関連性 Mammalian mitochondrial ribosomal proteins are encoded by nuclear genes and help in protein synthesis within the mitochondrion. Mitochondrial ribosomes (mitoribosomes) consist of a small 28S subunit and a large 39S subunit. They have an estimated 75% protein to rRNA composition compared to prokaryotic ribosomes, where this ratio is reversed. Another difference between mammalian mitoribosomes and prokaryotic ribosomes is that the latter contain a 5S rRNA. Among different species, the proteins comprising the mitoribosome differ greatly in sequence, and sometimes in biochemical properties, which prevents easy recognition by sequence homology. This gene encodes a 39S subunit protein. [Entrez Gene]

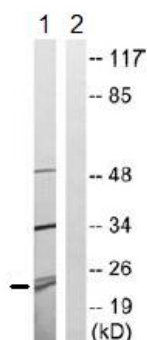
細胞内局在 Mitochondrion

画像



Immunohistochemistry (Formalin/PFA-fixed paraffin-embedded sections) - MRPL13 antibody (ab110065)

ab110065 at 1/50 dilution staining MRPL13 in paraffin-embedded Human breast carcinoma tissue by Immunohistochemistry. The image on the right is treated with the synthesized peptide.



Western blot - MRPL13 antibody (ab110065)

All lanes : Anti-MRPL13 antibody (ab110065) at 1/500 dilution

Lane 1 : A549 cell extract

Lane 2 : A549 cell extract with immunizing peptide at 10 µg

Lysates/proteins at 30 µg per lane.

Predicted band size: 21 kDa

Our Abpromise to you: Quality guaranteed and expert technical support

- Replacement or refund for products not performing as stated on the datasheet
- Valid for 12 months from date of delivery
- Response to your inquiry within 24 hours

- We provide support in Chinese, English, French, German, Japanese and Spanish
- Extensive multi-media technical resources to help you
- We investigate all quality concerns to ensure our products perform to the highest standards

If the product does not perform as described on this datasheet, we will offer a refund or replacement. For full details of the Abpromise, please visit <http://www.abcam.co.jp/abpromise> or contact our technical team.

Terms and conditions

- Guarantee only valid for products bought direct from Abcam or one of our authorized distributors