


Product datasheet

Anti-Synaptopodin antibody ab109560

3 References [画像数 1](#)

製品の概要

製品名	Anti-Synaptopodin antibody
製品の詳細	Rabbit polyclonal to Synaptopodin
特異性	No cross reactivity with other proteins.
アプリケーション	適用あり: WB, IHC-P
種交差性	交差種: Mouse, Rat, Human 交差が予測される動物種: Orangutan 
免疫原	Synthetic peptide: TSQMERSPMLERRHF , corresponding to internal sequence amino acids 495-509 of Human Synaptopodin. Run BLAST with Run BLAST with
ポジティブ・コントロール	Rat brain tissue lysate; Mouse brain tissue lysate.

法規制情報

医薬用外毒物

製品の特性

製品の状態	Liquid
保存方法	Shipped at 4°C. Upon delivery aliquot and store at -20°C. Avoid freeze / thaw cycles.
バッファー	Preservative: 0.05mg Sodium Azide, 0.05mg Thimerosal (merthiolate) Constituents: 5mg BSA, 0.9mg Sodium chloride, 0.02mg Dibasic monohydrogen sodium phosphate
精製度	Immunogen affinity purified
ポリ/モノ	ポリクローナル
アイソタイプ	IgG

アプリケーション

Our [Abpromise guarantee](#) covers the use of **ab109560** in the following tested applications.

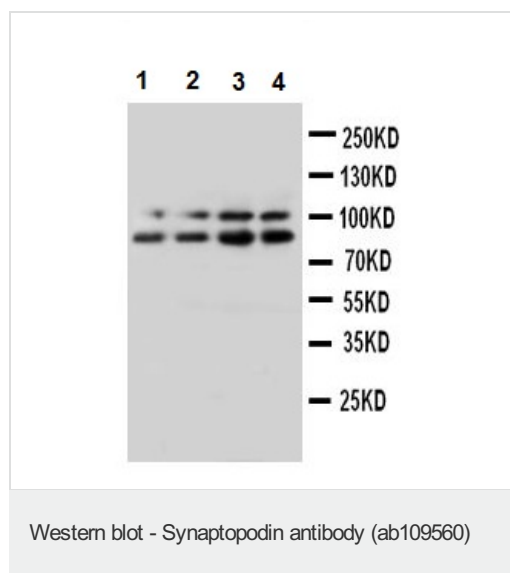
The application notes include recommended starting dilutions; optimal dilutions/concentrations should be determined by the end user.

アプリケーション	Abreviews	特記事項
WB		Use a concentration of 1 µg/ml. Predicted molecular weight: 99 kDa.
IHC-P		Use a concentration of 1 µg/ml. Perform heat mediated antigen retrieval before commencing with IHC staining protocol.

ターゲット情報

機能	Actin-associated protein that may play a role in modulating actin-based shape and motility of dendritic spines and renal podocyte foot processes. Seems to be essential for the formation of spine apparatuses in spines of telencephalic neurons, which is involved in synaptic plasticity.
組織特異性	Expressed in cerebral cortex.
配列類似性	Belongs to the synaptopodin family.
翻訳後修飾	O-glycosylated. Isoform 2 is phosphorylated on Ser-826, Thr-836, Ser-840 and Ser-871.
細胞内局在	Cytoplasm > cytoskeleton. Cell junction > tight junction. Perikaryon. Cell projection > dendritic spine. Cell junction > synapse > postsynaptic cell membrane > postsynaptic density. Cell junction > synapse. Localized at the tight junction of cells. In brain, localized to the postsynaptic densities and in the perikarya. Associated with dendritic spines of a subset of synapses.

画像



All lanes : Anti-Synaptopodin antibody (ab109560) at 1 µg/ml

Lane 1 : Rat brain tissue lysate

Lane 2 : Rat brain tissue lysate

Lane 3 : Mouse brain tissue lysate

Lane 4 : Mouse brain tissue lysate

Predicted band size : 99 kDa

Please note: All products are "FOR RESEARCH USE ONLY AND ARE NOT INTENDED FOR DIAGNOSTIC OR THERAPEUTIC USE"

Our Abpromise to you: Quality guaranteed and expert technical support

- Replacement or refund for products not performing as stated on the datasheet
- Valid for 12 months from date of delivery
- Response to your inquiry within 24 hours

- We provide support in Chinese, English, French, German, Japanese and Spanish
- Extensive multi-media technical resources to help you
- We investigate all quality concerns to ensure our products perform to the highest standards

If the product does not perform as described on this datasheet, we will offer a refund or replacement. For full details of the Abpromise, please visit <http://www.abcam.co.jp/abpromise> or contact our technical team.

Terms and conditions

- Guarantee only valid for products bought direct from Abcam or one of our authorized distributors