


Product datasheet

Anti-CREB3L1 antibody ab109099

画像数 1

製品の概要

製品名	Anti-CREB3L1 antibody
製品の詳細	Goat polyclonal to CREB3L1
アプリケーション	適用あり: WB
種交差性	交差種: Human 交差が予測される動物種: Mouse, Rat 
免疫原	Synthetic peptide: C-DFSHSKEWFHDRD , corresponding to C-terminal amino acids 497-509 of Human CREB3L1 (NP_443086.1). Run BLAST with Run BLAST with
ポジティブ・コントロール	A549 cell lysate.

製品の特性

製品の状態	Liquid
保存方法	Shipped at 4°C. Upon delivery aliquot and store at -20°C. Avoid freeze / thaw cycles.
バッファー	Preservative: 0.02% Sodium Azide Constituents: 0.5% BSA, Tris buffered saline, pH 7.3
精製度	Immunogen affinity purified
特記事項(精製)	ab109099 is purified from Goat serum by ammonium sulphate precipitation followed by antigen affinity chromatography using the immunizing peptide.
ポリ/モノ	ポリクローナル
アイソタイプ	IgG

アプリケーション

Our [Abpromise guarantee](#) covers the use of **ab109099** in the following tested applications.

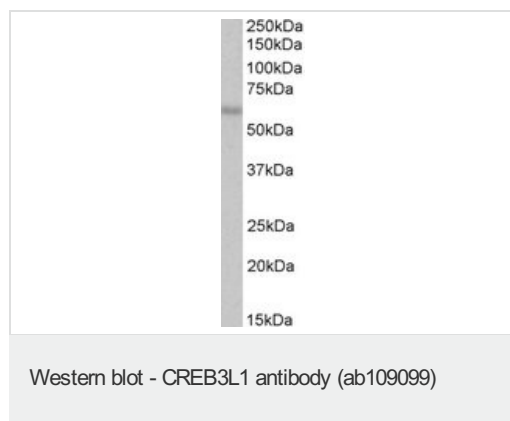
The application notes include recommended starting dilutions; optimal dilutions/concentrations should be determined by the end user.

アプリケーション	Abreviews	特記事項
WB		Use a concentration of 1 - 3 µg/ml. Predicted molecular weight: 57 kDa.

ターゲット情報

機能	Transcription factor that acts during endoplasmic reticulum stress by activating unfolded protein response target genes. Specifically involved in ER-stress response in astrocytes in the central nervous system (By similarity). May play a role in gliosis. In vitro, binds to box-B element, cAMP response element (CRE) and CRE-like sequences, and activates transcription through box-B element but not through CRE.
組織特異性	Ubiquitously expressed with high levels in pancreas and prostate. Expressed at relatively lower levels in brain.
配列類似性	Belongs to the bZIP family. ATF subfamily. Contains 1 bZIP domain.
翻訳後修飾	Controlled by regulated intramembrane proteolysis (RIP). Following ER stress a fragment containing the cytoplasmic transcription factor domain is released by proteolysis. The cleavage is performed sequentially by site-1 and site-2 proteases (PS1 and PS2) and is triggered by translocation to the Golgi apparatus.
細胞内局在	Endoplasmic reticulum membrane and Nucleus. Under ER stress the cleaved N-terminal cytoplasmic domain translocates into the nucleus.

画像



Anti-CREB3L1 antibody (ab109099) at 3

µg/ml + A549 cell lysate

Developed using the ECL technique

Predicted band size : 57 kDa

Please note: All products are "FOR RESEARCH USE ONLY AND ARE NOT INTENDED FOR DIAGNOSTIC OR THERAPEUTIC USE"

Our Promise to you: Quality guaranteed and expert technical support

- Replacement or refund for products not performing as stated on the datasheet
- Valid for 12 months from date of delivery
- Response to your inquiry within 24 hours
- We provide support in Chinese, English, French, German, Japanese and Spanish

- Extensive multi-media technical resources to help you
- We investigate all quality concerns to ensure our products perform to the highest standards

If the product does not perform as described on this datasheet, we will offer a refund or replacement. For full details of the Abpromise, please visit <http://www.abcam.co.jp/abpromise> or contact our technical team.

Terms and conditions

- Guarantee only valid for products bought direct from Abcam or one of our authorized distributors