

## Product datasheet

# Anti-ARHGAP20 antibody ab107935

### 画像数 1

#### 製品の概要

製品名	Anti-ARHGAP20 antibody
製品の詳細	Rabbit polyclonal to ARHGAP20
由来種	Rabbit
アプリケーション	適用あり: WB
種交差性	交差種: Human 交差が予測される動物種: Mouse, Rat, Rabbit, Horse, Guinea pig, Cow, Cat, Dog
免疫原	Synthetic peptide: YSSLSSPGTS PSGSSVSSQD SAFSQISEHS VFTPTETSSP IDCTFQAQRK, corresponding to a region within internal sequence amino acids 936-984 of Human ARHGAP20 (NP_065860). <a href="#">Run BLAST with ExPASy</a> <a href="#">Run BLAST with NCBI</a>
ポジティブ・コントロール	721_B Cell Lysate

#### 製品の特性

製品の状態	Liquid
保存方法	Shipped at 4°C. Upon delivery aliquot and store at -20°C. Avoid freeze / thaw cycles.
バッファー	Preservative: None Constituents: 2% Sucrose, PBS
精製度	Immunogen affinity purified
ポリ/モノ	ポリクローナル
アイソタイプ	IgG

#### アプリケーション

Our [Abpromise guarantee](#) covers the use of **ab107935** in the following tested applications.

The application notes include recommended starting dilutions; optimal dilutions/concentrations should be determined by the end user.

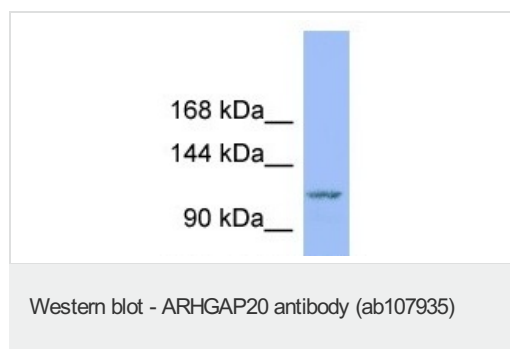
アプリケーション	Abreviews	特記事項
----------	-----------	------

アプリケーション	Abreviews	特記事項
WB		Use a concentration of 1 µg/ml. Predicted molecular weight: 133 kDa. Good results were obtained when blocked with 5% non-fat dry milk in 0.05% PBS-T.

## ターゲット情報

機能	GTPase activator for the Rho-type GTPases by converting them to an inactive GDP-bound state.
組織特異性	Expressed predominantly in the brain. Lower expression is found in lymph nodes.
関連疾患	Note=A chromosomal aberration involving ARHGAP20 may be a cause of B-cell chronic lymphocytic leukemia (B-CLL). Translocation t(X;11)(q21;q23) with BRWD3 does not result in fusion transcripts but disrupts both genes.
配列類似性	Contains 1 PH domain. Contains 1 Ras-associating domain. Contains 1 Rho-GAP domain.
発生段階	Low expression is found in fetal liver.

## 画像



Anti-ARHGAP20 antibody (ab107935) at 1 µg/ml + 721\_B Cell Lysate at 10 µg

**Predicted band size:** 133 kDa

6-18% SDS PAGE

**Please note:** All products are "FOR RESEARCH USE ONLY AND ARE NOT INTENDED FOR DIAGNOSTIC OR THERAPEUTIC USE"

## Our Abpromise to you: Quality guaranteed and expert technical support

- Replacement or refund for products not performing as stated on the datasheet
- Valid for 12 months from date of delivery
- Response to your inquiry within 24 hours
- We provide support in Chinese, English, French, German, Japanese and Spanish
- Extensive multi-media technical resources to help you
- We investigate all quality concerns to ensure our products perform to the highest standards

If the product does not perform as described on this datasheet, we will offer a refund or replacement. For full details of the Abpromise, please visit <http://www.abcam.co.jp/abpromise> or contact our technical team.

## Terms and conditions

---

- Guarantee only valid for products bought direct from Abcam or one of our authorized distributors