

## Product datasheet

# Anti-THUMPD3 antibody ab107668

### 画像数 1

#### 製品の概要

製品名	Anti-THUMPD3 antibody
製品の詳細	Rabbit polyclonal to THUMPD3
由来種	Rabbit
アプリケーション	適用あり: WB
種交差性	交差種: Human
免疫原	KLH conjugated synthetic peptide between amino acids 197-227 from the central region of Human THUMPD3 (NP_056268.2)
ポジティブ・コントロール	A375 cell line lysates

#### 製品の特性

製品の状態	Liquid
保存方法	Shipped at 4°C. Store at 4°C (up to 6 months). Store at -20°C long term.
バッファー	Preservative: 0.09% Sodium Azide Constituents: PBS
精製度	Immunogen affinity purified
特記事項(精製)	Purified through a protein A column, followed by peptide affinity purification.
ポリ/モノ	ポリクローナル
アイソタイプ	IgG

#### アプリケーション

Our [Abpromise guarantee](#) covers the use of **ab107668** in the following tested applications.

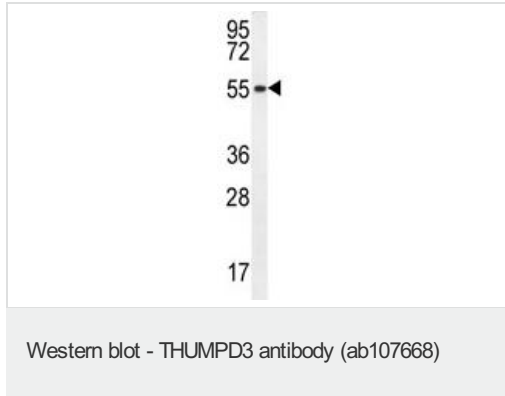
The application notes include recommended starting dilutions; optimal dilutions/concentrations should be determined by the end user.

アプリケーション	Abreviews	特記事項
WB		1/100 - 1/500. Predicted molecular weight: 57 kDa.

## 配列類似性

Belongs to the methyltransferase superfamily.  
Contains 1 THUMP domain.

## 画像



Anti-THUMPD3 antibody (ab107668) at 1/100  
dilution + A375 cell line lysates at 35 µg

**Predicted band size:** 57 kDa

**Please note:** All products are "FOR RESEARCH USE ONLY AND ARE NOT INTENDED FOR DIAGNOSTIC OR THERAPEUTIC USE"

## Our Abpromise to you: Quality guaranteed and expert technical support

- Replacement or refund for products not performing as stated on the datasheet
- Valid for 12 months from date of delivery
- Response to your inquiry within 24 hours
- We provide support in Chinese, English, French, German, Japanese and Spanish
- Extensive multi-media technical resources to help you
- We investigate all quality concerns to ensure our products perform to the highest standards

If the product does not perform as described on this datasheet, we will offer a refund or replacement. For full details of the Abpromise, please visit <http://www.abcam.co.jp/abpromise> or contact our technical team.

## Terms and conditions

- Guarantee only valid for products bought direct from Abcam or one of our authorized distributors