


Product datasheet

Anti-CCL3L1 antibody ab106541

画像数 1

製品の概要

製品名	Anti-CCL3L1 antibody
製品の詳細	Rabbit polyclonal to CCL3L1
由来種	Rabbit
アプリケーション	適用あり: WB, ELISA
種交差性	交差種: Pig 交差が予測される動物種: Cow 
免疫原	Recombinant full length mature Pig CCL3L1 raised in yeast (NP_001009579)
ポジティブ・コントロール	Recombinant Pig CCL3L1

製品の特性

製品の状態	Liquid
保存方法	Shipped at 4°C. Upon delivery aliquot. Store at -20°C or -80°C. Avoid freeze / thaw cycle.
バッファー	pH: 7.20 Preservative: 0.01% Sodium azide Constituents: 0.42% Potassium phosphate, 0.88% Sodium chloride
精製度	Protein A purified
特記事項(精製)	This product was Protein-A purified from monospecific antiserum by chromatography
ポリ/モノ	ポリクローナル
アイソタイプ	IgG

アプリケーション

Our [Abpromise guarantee](#) covers the use of **ab106541** in the following tested applications.

The application notes include recommended starting dilutions; optimal dilutions/concentrations should be determined by the end user.

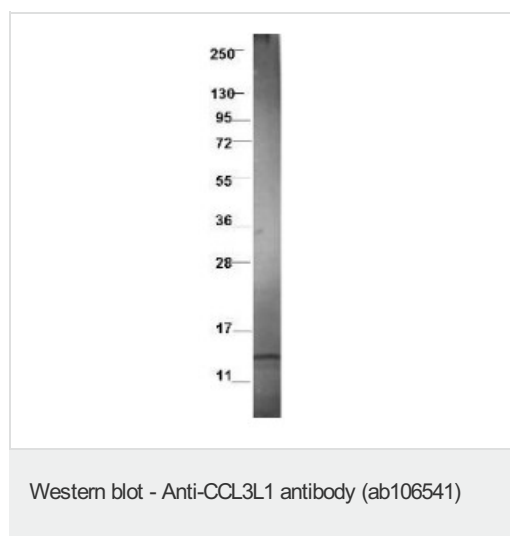
アプリケーション	Abreviews	特記事項
WB		Use a concentration of 1 µg/ml. Detects a band of approximately 7.8 kDa (predicted molecular weight: 10 kDa).

アプリケーション	Abreviews	特記事項
ELISA		Use at an assay dependent dilution.

ターゲット情報

機能	Chemotactic for lymphocytes and monocytes. Is a ligand for CCR1, CCR3 and CCR5. Is an inhibitor of HIV-1-infection. The processed form LD78-beta(3-70) shows a 20-fold to 30-fold higher chemotactic activity and is a very potent inhibitor of HIV-1-infection. LD78-beta(3-70) is also a ligand for CCR1, CCR3 and CCR5.
配列類似性	Belongs to the intercrine beta (chemokine CC) family.
翻訳後修飾	The N-terminal processed forms LD78-beta(3-70) and LD78-beta(5-70) are produced by proteolytic cleavage after secretion from peripheral blood monocytes. The cleavage to yield LD78-beta(3-70) is probably achieved by DPP4.
細胞内局在	Secreted.

画像



Anti-CCL3L1 antibody (ab106541) at 1 µg/ml
+ Recombinant swine CCL3L1

Secondary

Dylight™ 649 Conjugated Anti-Rabbit IgG
(H&L)

Predicted band size: 10 kDa

Observed band size: 7.8 kDa

Please note: All products are "FOR RESEARCH USE ONLY AND ARE NOT INTENDED FOR DIAGNOSTIC OR THERAPEUTIC USE"

Our Promise to you: Quality guaranteed and expert technical support

- Replacement or refund for products not performing as stated on the datasheet
- Valid for 12 months from date of delivery
- Response to your inquiry within 24 hours
- We provide support in Chinese, English, French, German, Japanese and Spanish
- Extensive multi-media technical resources to help you
- We investigate all quality concerns to ensure our products perform to the highest standards

If the product does not perform as described on this datasheet, we will offer a refund or replacement. For full details of the Abpromise, please visit <http://www.abcam.co.jp/abpromise> or contact our technical team.

Terms and conditions

- Guarantee only valid for products bought direct from Abcam or one of our authorized distributors