


Product datasheet

Anti-TRIM29 antibody ab106000

画像数 1

製品の概要

製品名	Anti-TRIM29 antibody
製品の詳細	Rabbit polyclonal to TRIM29
由来種	Rabbit
特異性	Reacts with acetylated and non-acetylated (at K116) ATDC protein. Cross-reactivity with ATDC from other sources has not been determined.
アプリケーション	適用あり: Dot blot, WB, ELISA
種交差性	交差種: Human 交差が予測される動物種: Horse, Cow, Chimpanzee, Macaque monkey 
免疫原	Synthetic peptide corresponding to an internal portion of Human TRIM29 around lysine 116.
ポジティブ・コントロール	Acetylated and non-acetylated forms of the immunizing peptide

製品の特性

製品の状態	Liquid
保存方法	Shipped at 4°C. Upon delivery aliquot and store at -20°C. Avoid freeze / thaw cycles.
バッファー	pH: 7.20 Preservative: 0.01% Sodium azide Constituents: 0.42% Potassium phosphate, 0.88% Sodium chloride
精製度	Immunogen affinity purified
特記事項(精製)	Affinity purified from monospecific antiserum by immunoaffinity chromatography.
ポリモノ	ポリクローナル
アイソタイプ	IgG

アプリケーション

Our [Abpromise guarantee](#) covers the use of **ab106000** in the following tested applications.

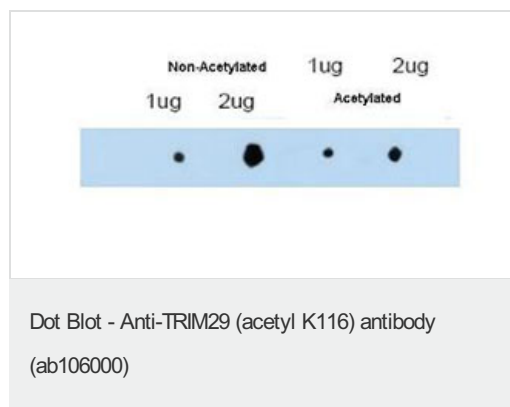
The application notes include recommended starting dilutions; optimal dilutions/concentrations should be determined by the end user.

アプリケーション	Abreviews	特記事項
Dot blot		Use at an assay dependent concentration.
WB		1/500 - 1/3000. Predicted molecular weight: 66 kDa.
ELISA		1/100000.

ターゲット情報

機能	It is able to complement the radiosensitivity defect of an ataxia telangiectasia (AT) fibroblast cell line.
組織特異性	Expressed in placenta, prostate and thymus.
配列類似性	Contains 1 B box-type zinc finger.
翻訳後修飾	Constitutively phosphorylated by PKC on serine/threonine in A431 cells.
細胞内局在	Cytoplasm. Colocalizes with intermediate filaments.

画像



ab106000 at 1/500 dilution showing reactivity by dot blot with acetylated and non-acetylated forms of the immunizing peptide.

Please note: All products are "FOR RESEARCH USE ONLY AND ARE NOT INTENDED FOR DIAGNOSTIC OR THERAPEUTIC USE"

Our Abpromise to you: Quality guaranteed and expert technical support

- Replacement or refund for products not performing as stated on the datasheet
- Valid for 12 months from date of delivery
- Response to your inquiry within 24 hours
- We provide support in Chinese, English, French, German, Japanese and Spanish
- Extensive multi-media technical resources to help you
- We investigate all quality concerns to ensure our products perform to the highest standards

If the product does not perform as described on this datasheet, we will offer a refund or replacement. For full details of the Abpromise, please visit <http://www.abcam.co.jp/abpromise> or contact our technical team.

Terms and conditions

- Guarantee only valid for products bought direct from Abcam or one of our authorized distributors