




Product datasheet

Anti-Src antibody ab105215

★★★★★ 1 Abreviews [画像数 2](#)

製品の概要

製品名	Anti-Src antibody
製品の詳細	Rabbit polyclonal to Src
由来種	Rabbit
アプリケーション	適用あり: WB, IHC-P
種交差性	交差種: Dog, Human 交差が予測される動物種: Mouse, Rat, Sheep, Rabbit, Chicken, Guinea pig, Hamster, Cow, Pig, Xenopus laevis, Drosophila melanogaster, Monkey, Rainbow trout 
免疫原	Synthetic peptide: YDYESRTETDLSFKKGER conjugated to KLH, corresponding to amino acids 92-109 of Human Src <div style="text-align: right;">  Run BLAST with  Run BLAST with </div>
ポジティブ・コントロール	Human Brain, Cerebellum

製品の特性

製品の状態	Liquid
保存方法	Shipped at 4°C. Store at +4°C short term (1-2 weeks). Store at -20°C long term.
バッファー	Preservative: None Constituents: Whole serum
精製度	Whole antiserum
ポリ/モノ	ポリクローナル
アイソタイプ	IgG

アプリケーション

Our [Abpromise guarantee](#) covers the use of **ab105215** in the following tested applications.

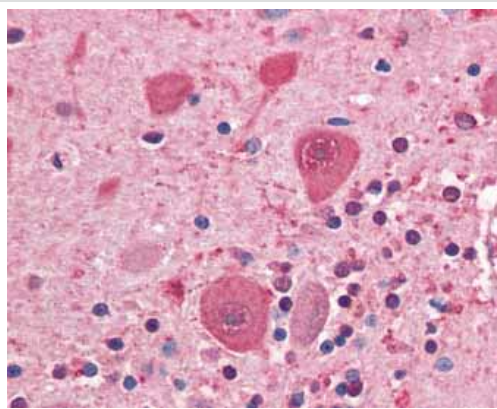
The application notes include recommended starting dilutions; optimal dilutions/concentrations should be determined by the end user.

アプリケーション	Abreviews	特記事項
WB		1/1000. Predicted molecular weight: 60 kDa.
IHC-P	★★★★★	1/250. Perform heat mediated antigen retrieval with citrate buffer pH 6 before commencing with IHC staining protocol.

ターゲット情報

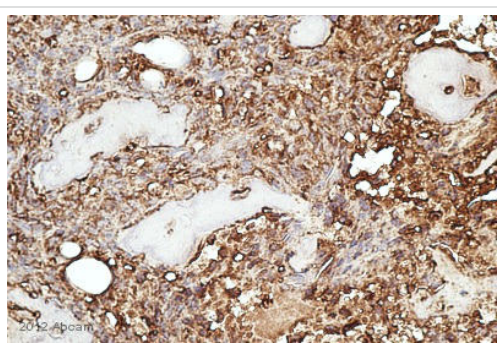
機能	<p>Non-receptor protein tyrosine kinase that plays pivotal roles in numerous cellular processes such as proliferation, migration, and transformation. In concert with PTK2B, plays an important role in osteoclastic bone resorption. Both the formation of a SRC-PTK2B complex, and SRC kinase activity are necessary for this function. Once it is recruited to the activated integrins, by PTK2B, it phosphorylates CBL which in turn induces the activation and recruitment of phosphatidylinositol 3-kinase to the cell membrane in a signaling pathway that is critical for osteoclast function. Promotes energy production in osteoclasts by activating mitochondrial cytochrome C oxidase. Phosphorylates RUNX3 and COX2 on tyrosine residues, TNK2 on 'Tyr-284' and CBL on 'Tyr-731'. Enhances DDX58/RIG-I-elicited antiviral signaling.</p>
配列類似性	<p>Belongs to the protein kinase superfamily. Tyr protein kinase family. SRC subfamily. Contains 1 protein kinase domain. Contains 1 SH2 domain. Contains 1 SH3 domain.</p>
翻訳後修飾	<p>Dephosphorylated at Tyr-530 by PTPRJ (By similarity). Phosphorylated on Tyr-530 by c-Src kinase (CSK). The phosphorylated form is termed pp60c-src. Dephosphorylated by PTPRJ at Tyr-419. Normally maintained in an inactive conformation with the SH2 domain engaged with Tyr-530, the SH3 domain engaged with the SH2-kinase linker, and Tyr-419 dephosphorylated. Dephosphorylation of Tyr-530 as a result of protein tyrosine phosphatase (PTP) action disrupts the intramolecular interaction between the SH2 domain and Tyr-530, Tyr-419 can then become autophosphorylated, resulting in SRC activation. Phosphorylation of Tyr-530 by CSK allows this interaction to reform, resulting in SRC inactivation. S-nitrosylation is important for activation of its kinase activity.</p>
細胞内局在	<p>Cell membrane. Mitochondrion inner membrane.</p>
製品の状態	<p>This protein is known to be similar in amino acid sequence to HCK (P08631), LCK (P06239), FYN (P06241), YES1 (P07947), and LYN (P07948). Therefore, cross-reactivity with these homologous proteins may be observed. We would be happy to provide immunogen alignment information upon request.</p>

画像



Immunohistochemistry (Formalin/PFA-fixed paraffin-embedded sections) - Src antibody (ab105215)

Human Brain, Cerebellum (formalin-fixed, paraffin-embedded) stained with ab105215 at 1/250 dilution.



Immunohistochemistry (Formalin/PFA-fixed paraffin-embedded sections) - Anti-Src antibody (ab105215)

This image is courtesy of an anonymous Abreview

ab105215 staining Src in Dog osteosarcoma tissue sections by Immunohistochemistry (IHC-P - paraformaldehyde-fixed, paraffin-embedded sections). Tissue was fixed with acetone and blocked with 2% serum for 1 hour at 23°C; antigen retrieval was by heat mediation. Samples were incubated with primary antibody (1/250 in serum) for 14 hours at 4°C. A Biotinylated Goat anti-rabbit IgG (1/400) was used as the secondary antibody.

Please note: All products are "FOR RESEARCH USE ONLY AND ARE NOT INTENDED FOR DIAGNOSTIC OR THERAPEUTIC USE"

Our Abpromise to you: Quality guaranteed and expert technical support

- Replacement or refund for products not performing as stated on the datasheet
- Valid for 12 months from date of delivery
- Response to your inquiry within 24 hours
- We provide support in Chinese, English, French, German, Japanese and Spanish
- Extensive multi-media technical resources to help you
- We investigate all quality concerns to ensure our products perform to the highest standards

If the product does not perform as described on this datasheet, we will offer a refund or replacement. For full details of the Abpromise, please visit <http://www.abcam.co.jp/abpromise> or contact our technical team.

Terms and conditions

- Guarantee only valid for products bought direct from Abcam or one of our authorized distributors