


Product datasheet

Anti-TFII I antibody ab10465

画像数 2

製品の概要

製品名	Anti-TFII I antibody
製品の詳細	Rabbit polyclonal to TFII I
由来種	Rabbit
アプリケーション	適用あり: WB, IHC-P
種交差性	交差種: Human 交差が予測される動物種: Mouse, Rat, Chimpanzee, Rhesus monkey, Orangutan, Bat 
免疫原	Immunogen was a synthetic peptide, which represented a portion of human general transcription factor II-I encoded within exons 32 and 33 (LocusLink ID 2969).
ポジティブ・コントロール	Whole cell lysate from HEK293 cells treated with TFII I siRNA.

製品の特性

製品の状態	Liquid
保存方法	Shipped at 4°C. Upon delivery aliquot and store at -20°C. Avoid freeze / thaw cycles.
バッファー	Preservative: 0.1% Sodium Azide Constituents: 8mM PBS, 60mM Citrate, 150mM Tris, pH 7-8
精製度	Immunogen affinity purified
特記事項(精製)	Antibodies were affinity purified using the peptide immobilized on solid support.
ポリ/モノ	ポリクローナル
アイソタイプ	IgG

アプリケーション

Our [Abpromise guarantee](#) covers the use of **ab10465** in the following tested applications.

The application notes include recommended starting dilutions; optimal dilutions/concentrations should be determined by the end user.

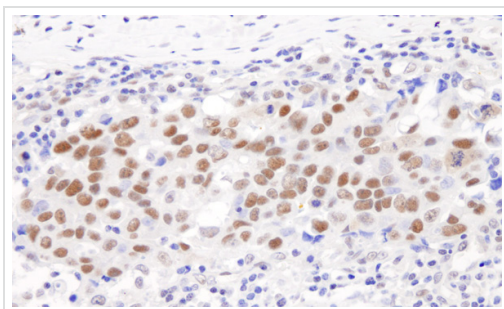
アプリケーション	Abreviews	特記事項
WB		1/1000 - 1/10000. Detects a band of approximately 130 kDa (predicted molecular weight: 114 kDa).

アプリケーション	Abreviews	特記事項
IHC-P		1/1000 - 1/5000. Perform heat mediated antigen retrieval with citrate buffer pH 6 before commencing with IHC staining protocol.

## ターゲット情報

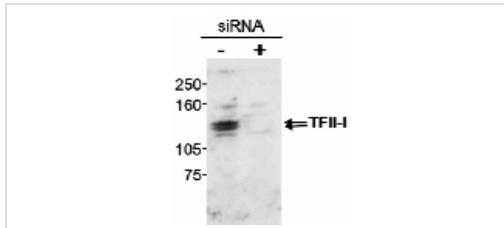
<b>機能</b>	Interacts with the basal transcription machinery by coordinating the formation of a multiprotein complex at the C-FOS promoter, and linking specific signal responsive activator complexes. Promotes the formation of stable high-order complexes of SRF and PHOX1 and interacts cooperatively with PHOX1 to promote serum-inducible transcription of a reporter gene derived by the C-FOS serum response element (SRE). Acts as a coregulator for USF1 by binding independently two promoter elements, a pyrimidine-rich initiator (Inr) and an upstream E-box. Required for the formation of functional ARID3A DNA-binding complexes and for activation of immunoglobulin heavy-chain transcription upon B-lymphocyte activation.
<b>組織特異性</b>	Ubiquitous. Isoform 1 is strongly expressed in fetal brain, weakly in adult brain, muscle, and lymphoblasts and is almost undetectable in other adult tissues, while the other isoforms are equally expressed in all adult tissues.
<b>関連疾患</b>	Note=GTF2I is located in the Williams-Beuren syndrome (WBS) critical region. WBS results from a hemizygous deletion of several genes on chromosome 7q11.23, thought to arise as a consequence of unequal crossing over between highly homologous low-copy repeat sequences flanking the deleted region. Haploinsufficiency of GTF2I may be the cause of certain cardiovascular and musculo-skeletal abnormalities observed in the disease.
<b>配列類似性</b>	Belongs to the TFIIH family. Contains 6 GTF2H-like repeats.
<b>翻訳後修飾</b>	Transiently phosphorylated on tyrosine residues by BTK in response to B-cell receptor stimulation. Phosphorylation on Tyr-248 and Tyr-398, and perhaps, on Tyr-503 contributes to BTK-mediated transcriptional activation. Sumoylated.
<b>細胞内局在</b>	Cytoplasm. Nucleus. Colocalizes with BTK in the cytoplasm.

## 画像



Immunohistochemistry (Formalin/PFA-fixed paraffin-embedded sections) analysis of human breast carcinoma tissue labelling TFII I with ab10465 at 1/5000 (0.2µg/ml). Detection: DAB.

Immunohistochemistry (Formalin/PFA-fixed paraffin-embedded sections) - Anti-TFII I antibody (ab10465)



Western blot - TFII I antibody (ab10465)

ab10465 detection of human TFII I by Western Blot. *Samples:* Whole cell lysate (100µg) from HEK293 cells treated with TFII I siRNA (+) or untreated (-). *Antibody:* ab10465 used at 0.2 µg/ml. *Detection:* Chemiluminescence.

ab10465 detection of human TFII I by Western Blot. *Samples:* Whole cell lysate (100µg) from HEK293 cells treated with TFII I siRNA (+) or untreated (-). *Antibody:* ab10465 used at 0.2 µg/ml. *Detection:* Chemiluminescence.

**Please note:** All products are "FOR RESEARCH USE ONLY AND ARE NOT INTENDED FOR DIAGNOSTIC OR THERAPEUTIC USE"

### Our Abpromise to you: Quality guaranteed and expert technical support

- Replacement or refund for products not performing as stated on the datasheet
- Valid for 12 months from date of delivery
- Response to your inquiry within 24 hours
- We provide support in Chinese, English, French, German, Japanese and Spanish
- Extensive multi-media technical resources to help you
- We investigate all quality concerns to ensure our products perform to the highest standards

If the product does not perform as described on this datasheet, we will offer a refund or replacement. For full details of the Abpromise, please visit <http://www.abcam.co.jp/abpromise> or contact our technical team.

### Terms and conditions

- Guarantee only valid for products bought direct from Abcam or one of our authorized distributors