


Product datasheet

Anti-eIF2A antibody ab104260

画像数 2

製品の概要

製品名	Anti-eIF2A antibody
製品の詳細	Rabbit polyclonal to eIF2A
由来種	Rabbit
アプリケーション	適用あり: IHC-P
種交差性	交差種: Human 交差が予測される動物種: Chimpanzee, Rhesus monkey, Gorilla 
免疫原	Synthetic peptide corresponding to a region within amino acids 525-575 of Human eIF2A.
ポジティブ・コントロール	Human Breast Carcinoma, Colon Carcinoma, Ovarian Carcinoma, Small Cell Lung Cancer, Stomach Adenocarcinoma and Testicular Seminoma.

製品の特性

製品の状態	Liquid
保存方法	Shipped at 4°C. Upon delivery aliquot and store at -20°C. Avoid freeze / thaw cycles.
バッファー	Preservative: 0.09% Sodium Azide Constituents: 0.1% BSA, Tris buffered saline
精製度	Immunogen affinity purified
ポリ/モノ	ポリクローナル
アイソタイプ	IgG

アプリケーション

Our [Abpromise guarantee](#) covers the use of **ab104260** in the following tested applications.

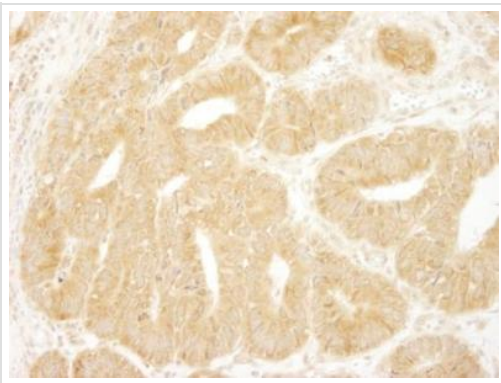
The application notes include recommended starting dilutions; optimal dilutions/concentrations should be determined by the end user.

アプリケーション	Abreviews	特記事項
IHC-P		1/100 - 1/500. Antigen retrieval is recommended. Antigen retrieval with citrate buffer or tris-EDTA pH9.0 buffer will enhance staining.

ターゲット情報

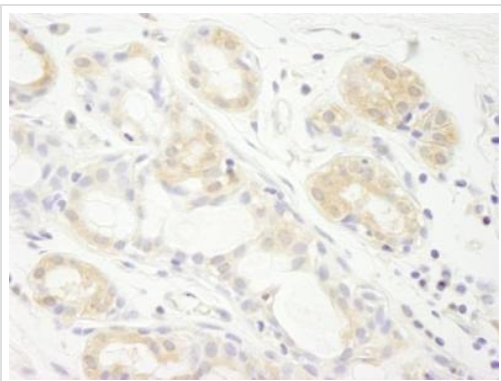
機能	Functions in the early steps of protein synthesis of a small number of specific mRNAs. Acts by directing the binding of methionyl-tRNAi to 40S ribosomal subunits. In contrast to the eIF-2 complex, it binds methionyl-tRNAi to 40 S subunits in a codon-dependent manner, whereas the eIF-2 complex binds methionyl-tRNAi to 40 S subunits in a GTP-dependent manner. May act by impinging the expression of specific proteins.
組織特異性	Widely expressed. Expressed at higher level in pancreas, heart, brain and placenta.
配列類似性	Belongs to the WD repeat EIF2A family. Contains 3 WD repeats.

画像



ab104260, at 1/250 dilution, staining eIF2 alpha in formalin-fixed, paraffin-embedded Human colon carcinoma by Immunohistochemistry using DAB staining.

Immunohistochemistry (Formalin/PFA-fixed paraffin-embedded sections) - Anti-eIF2A antibody (ab104260)



ab104260, at 1/250 dilution, staining eIF2A in formalin-fixed, paraffin-embedded Human breast carcinoma by Immunohistochemistry using DAB staining.

Immunohistochemistry (Formalin/PFA-fixed paraffin-embedded sections) - Anti-eIF2A antibody (ab104260)

Please note: All products are "FOR RESEARCH USE ONLY AND ARE NOT INTENDED FOR DIAGNOSTIC OR THERAPEUTIC USE"

- Replacement or refund for products not performing as stated on the datasheet
- Valid for 12 months from date of delivery
- Response to your inquiry within 24 hours

- We provide support in Chinese, English, French, German, Japanese and Spanish
- Extensive multi-media technical resources to help you
- We investigate all quality concerns to ensure our products perform to the highest standards

If the product does not perform as described on this datasheet, we will offer a refund or replacement. For full details of the Abpromise, please visit <http://www.abcam.co.jp/abpromise> or contact our technical team.

Terms and conditions

- Guarantee only valid for products bought direct from Abcam or one of our authorized distributors