

Product datasheet

Anti-CED6 antibody ab103642

画像数 2

製品の概要

製品名	Anti-CED6 antibody
製品の詳細	Rabbit polyclonal to CED6
由来種	Rabbit
アプリケーション	適用あり: WB, IHC-P
種交差性	交差種: Human
免疫原	Synthetic peptide conjugated to KLH, corresponding to a region within C terminal amino acids 235-265 of Human CED6
ポジティブ・コントロール	CEM cell lysate, Human skeletal muscle tissue

製品の特性

製品の状態	Liquid
保存方法	Shipped at 4°C. Store at 4°C (up to 6 months). Store at -20°C long term.
バッファー	Preservative: 0.09% Sodium Azide Constituents: PBS
精製度	Immunogen affinity purified
特記事項(精製)	This antibody is purified through a protein A column, followed by peptide affinity purification.
ポリ/モノ	ポリクローナル
アイソタイプ	IgG

アプリケーション

Our [Abpromise guarantee](#) covers the use of **ab103642** in the following tested applications.

The application notes include recommended starting dilutions; optimal dilutions/concentrations should be determined by the end user.

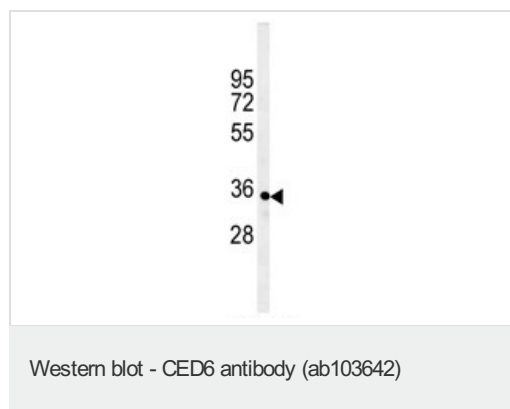
アプリケーション	Abreviews	特記事項
WB		1/100 - 1/500. Predicted molecular weight: 34 kDa.

アプリケーション	Abreviews	特記事項
IHC-P		1/50 - 1/100. Perform heat mediated antigen retrieval with citrate buffer pH 6 before commencing with IHC staining protocol.

ターゲット情報

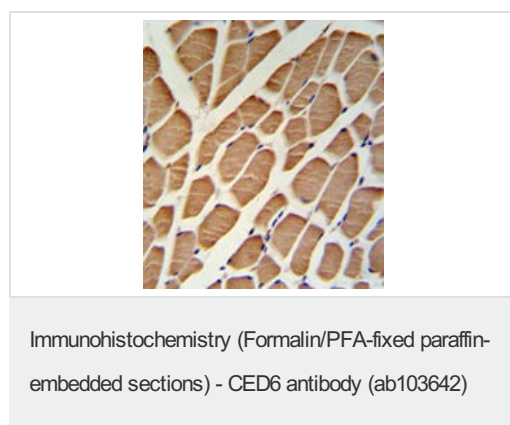
機能	May function as an adapter protein. Required for efficient phagocytosis of apoptotic cells. Modulates cellular glycosphingolipid and cholesterol transport. May play a role in the internalization and endosomal trafficking of various LRP1 ligands, such as PSAP. Increases cellular levels of GTP-bound ARF6.
組織特異性	Widely expressed. Detected in macrophages, pancreas, kidney, skeletal muscle, heart, colon, intestine, lung, placenta and ovary.
配列類似性	Belongs to the ced-6 family. Contains 1 PID domain.
細胞内局在	Cytoplasm. May associate with the cytoplasmic side of the plasma membrane and early endosomes.

画像



Anti-CED6 antibody (ab103642) at 1/100 dilution + CEM cell lysate at 35 µg

Predicted band size: 34 kDa



IHC analysis in formalin fixed and paraffin embedded Human skeletal muscle tissue followed by peroxidase conjugation of the secondary antibody and DAB staining, using ab103642 at a dilution of 1/50.

Please note: All products are "FOR RESEARCH USE ONLY AND ARE NOT INTENDED FOR DIAGNOSTIC OR THERAPEUTIC USE"

Our Abpromise to you: Quality guaranteed and expert technical support

- Replacement or refund for products not performing as stated on the datasheet
- Valid for 12 months from date of delivery
- Response to your inquiry within 24 hours

- We provide support in Chinese, English, French, German, Japanese and Spanish
- Extensive multi-media technical resources to help you
- We investigate all quality concerns to ensure our products perform to the highest standards

If the product does not perform as described on this datasheet, we will offer a refund or replacement. For full details of the Abpromise, please visit <http://www.abcam.co.jp/abpromise> or contact our technical team.

Terms and conditions

- Guarantee only valid for products bought direct from Abcam or one of our authorized distributors