

Product datasheet

Anti-TORC2 antibody ab103528

画像数 1

製品の概要

| | |
|--------------|--|
| 製品名 | Anti-TORC2 antibody |
| 製品の詳細 | Rabbit polyclonal to TORC2 |
| 由来種 | Rabbit |
| アプリケーション | 適用あり: IHC-P |
| 種交差性 | 交差種: Human 交差が予測される動物種: Mouse, Rat, Rabbit, Horse, Dog, Pig, Chimpanzee, Rhesus monkey, Gorilla, Chinese hamster, Orangutan ▲ |
| 免疫原 | Synthetic peptide corresponding to a region between residues 300 and 350 of Human Torc2 (NP_859066.1). |
| ポジティブ・コントロール | Human ovarian carcinoma |

製品の特性

| | |
|--------|---|
| 製品の状態 | Liquid |
| 保存方法 | Shipped at 4°C. Upon delivery aliquot and store at -20°C. Avoid freeze / thaw cycles. |
| バッファー | Preservative: 0.09% Sodium Azide Constituents: 0.1% BSA, Tris buffered saline |
| 精製度 | Immunogen affinity purified |
| ポリ/モノ | ポリクローナル |
| アイソタイプ | IgG |

アプリケーション

Our [Abpromise guarantee](#) covers the use of **ab103528** in the following tested applications.

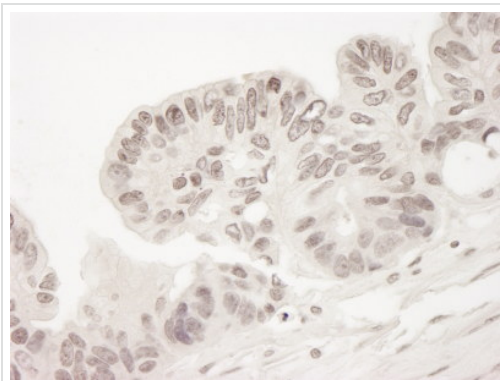
The application notes include recommended starting dilutions; optimal dilutions/concentrations should be determined by the end user.

| アプリケーション | Abreviews | 特記事項 |
|----------|-----------|----------------|
| IHC-P | | 1/100 - 1/500. |

ターゲット情報

| | |
|-------|--|
| 機能 | Transcriptional coactivator for CREB1 which activates transcription through both consensus and variant cAMP response element (CRE) sites. Acts as a coactivator, in the SIK/TORC signaling pathway, being active when dephosphorylated and acts independently of CREB1 'Ser-133' phosphorylation. Enhances the interaction of CREB1 with TAF4. Regulates gluconeogenesis as a component of the LKB1/AMPK/TORC2 signaling pathway. Regulates the expression of specific genes such as the steroidogenic gene, StAR. Potent coactivator of PPARGC1A and inducer of mitochondrial biogenesis in muscle cells. Also coactivator for TAX activation of the human T-cell leukemia virus type 1 (HTLV-1) long terminal repeats (LTR). |
| 組織特異性 | Most abundantly expressed in the thymus. Present in both B and T lymphocytes. Highly expressed in HEK293T cells and in insulinomas. High levels also in spleen, ovary, muscle and lung, with highest levels in muscle. Lower levels found in brain, colon, heart, kidney, prostate, small intestine and stomach. Weak expression in liver and pancreas. |
| 配列類似性 | Belongs to the TORC family. |
| 翻訳後修飾 | Phosphorylation/dephosphorylation states of Ser-171 are required for regulating transduction of CREB activity. TORCs are inactive when phosphorylated, and active when dephosphorylated at this site. This primary site of phosphorylation, is regulated by cAMP and calcium levels and is dependent on the phosphorylation of SIKs by LKB1. Both insulin and AMPK increase this phosphorylation, of TORC2 while glucagon suppresses it. |
| 細胞内局在 | Cytoplasm. Nucleus. Translocated from the nucleus to the cytoplasm on interaction of the phosphorylated form with 14-3-3 protein. In response to cAMP levels and glucagon, relocated to the nucleus. |

画像



ab103528 at 1/250 staining Torc2 in Formalin-fixed paraffin-embedded section of Human ovarian carcinoma.

Immunohistochemistry (Formalin/PFA-fixed paraffin-embedded sections) - Torc2 antibody (ab103528)

Please note: All products are "FOR RESEARCH USE ONLY AND ARE NOT INTENDED FOR DIAGNOSTIC OR THERAPEUTIC USE"

Our Abpromise to you: Quality guaranteed and expert technical support

- Replacement or refund for products not performing as stated on the datasheet
- Valid for 12 months from date of delivery
- Response to your inquiry within 24 hours

- We provide support in Chinese, English, French, German, Japanese and Spanish
- Extensive multi-media technical resources to help you
- We investigate all quality concerns to ensure our products perform to the highest standards

If the product does not perform as described on this datasheet, we will offer a refund or replacement. For full details of the Abpromise, please visit <http://www.abcam.co.jp/abpromise> or contact our technical team.

Terms and conditions

- Guarantee only valid for products bought direct from Abcam or one of our authorized distributors