

Anti-Apolipoprotein D antibody [8CD6] ab10336

1 References [画像数 1](#)

製品の概要

製品名	Anti-Apolipoprotein D antibody [8CD6]
製品の詳細	Mouse monoclonal [8CD6] to Apolipoprotein D
由来種	Mouse
特異性	APO-D is localized to steroid-responsive tissues (adrenal cortex, ovary, endometrium, prostate, and pituitary). Apocrine epithelium within axillary skin exhibited strongly positive staining for APO-D, and peripheral nerves, pituitary and renal tubules were also immunoreactive. Expression of Apo-D in the non-malignant prostate gland has not been reported. In paraffin-embedded tissues, Apo-D demonstrates a cytoplasmic staining pattern in some prostate carcinomas.
アプリケーション	適用あり: IHC-P
種交差性	交差種: Human
免疫原	Full length protein (Human).
ポジティブ・コントロール	Prostate carcinoma tissue lysate.
特記事項	Apolipoprotein-D (APO-D), a progesterone binding glycoprotein of 24,000 dalton monomer molecular size, is a constituent of high density lipoprotein in plasma, and was first isolated in large quantity as GCDFP- 24, the major protein component of most human breast cyst fluids. In recent studies, Apo-D immunoreactivity has been shown to be an early indicator of prostate cancer and advanced primary prostate tumors.

製品の特性

製品の状態	Liquid
保存方法	Shipped at 4°C. Store at +4°C short term (1-2 weeks). Store at -20°C or -80°C. Avoid freeze / thaw cycle.
バッファー	Preservative: 0.1% Sodium Azide Constituents: 0.1% BSA, PBS
精製度	Tissue culture supernatant
特記事項 (精製)	Ammonium sulphate cut.
一次抗体 備考	Apolipoprotein-D (APO-D), a progesterone binding glycoprotein of 24,000 dalton monomer molecular size, is a constituent of high density lipoprotein in plasma, and was first isolated in

large quantity as GCDFP- 24, the major protein component of most human breast cyst fluids. In recent studies, Apo-D immunoreactivity has been shown to be an early indicator of prostate cancer and advanced primary prostate tumors.

ポリ/モノ	モノクローナル
クローン名	8CD6
アイソタイプ	IgG1

アプリケーション

Our [Abpromise guarantee](#) covers the use of **ab10336** in the following tested applications.

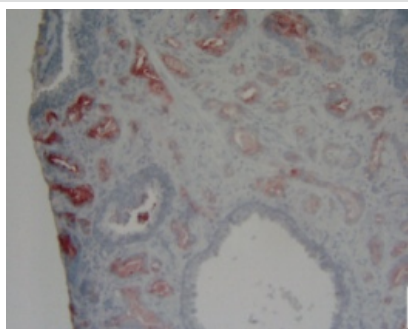
The application notes include recommended starting dilutions; optimal dilutions/concentrations should be determined by the end user.

アプリケーション	Abreviews	特記事項
IHC-P		1/40. Retrieve antigens with 70% Formic acid for 10-30 minutes at room temperature before commencing with IHC staining protocol.

ターゲット情報

機能	APOD occurs in the macromolecular complex with lecithin-cholesterol acyltransferase. It is probably involved in the transport and binding of bilin. Appears to be able to transport a variety of ligands in a number of different contexts.
組織特異性	Expressed in liver, intestine, pancreas, kidney, placenta, adrenal, spleen, fetal brain tissue and tears.
配列類似性	Belongs to the calycin superfamily. Lipocalin family.
細胞内局在	Secreted.

画像



IHC-P using Ab10336.

Immunohistochemistry (Formalin/PFA-fixed paraffin-embedded sections) - Anti-Apolipoprotein D antibody [8CD6] (ab10336)

Please note: All products are "FOR RESEARCH USE ONLY AND ARE NOT INTENDED FOR DIAGNOSTIC OR THERAPEUTIC USE"

Our Abpromise to you: Quality guaranteed and expert technical support

- Replacement or refund for products not performing as stated on the datasheet
- Valid for 12 months from date of delivery
- Response to your inquiry within 24 hours

- We provide support in Chinese, English, French, German, Japanese and Spanish
- Extensive multi-media technical resources to help you
- We investigate all quality concerns to ensure our products perform to the highest standards

If the product does not perform as described on this datasheet, we will offer a refund or replacement. For full details of the Abpromise, please visit <http://www.abcam.co.jp/abpromise> or contact our technical team.

Terms and conditions

- Guarantee only valid for products bought direct from Abcam or one of our authorized distributors