

## Product datasheet

# Anti-RPL17 antibody ab103312

### 画像数 2

#### 製品の概要

製品名	Anti-RPL17 antibody
製品の詳細	Rabbit polyclonal to RPL17
由来種	Rabbit
アプリケーション	<b>適用あり:</b> WB, IHC-P
種交差性	<b>交差種:</b> Human
免疫原	Synthetic peptide corresponding to a region within C terminal amino acids 155-184 of Human RPL17, conjugated to KLH.
ポジティブ・コントロール	A375 cell line lysates (WB); Human colon carcinoma tissue (IHC-P)

#### 製品の特性

製品の状態	Liquid
保存方法	Shipped at 4°C. Store at 4°C (up to 6 months). Store at -20°C long term.
バッファー	Preservative: 0.09% Sodium Azide Constituents: PBS
精製度	Immunogen affinity purified
特記事項(精製)	This antibody is purified through a protein A column, followed by peptide affinity purification.
ポリ/モノ	ポリクローナル
アイソタイプ	IgG

#### アプリケーション

Our [Abpromise guarantee](#) covers the use of **ab103312** in the following tested applications.

The application notes include recommended starting dilutions; optimal dilutions/concentrations should be determined by the end user.

アプリケーション	Abreviews	特記事項
WB		1/100 - 1/500. Predicted molecular weight: 21 kDa.
IHC-P		1/50 - 1/100.

## ターゲット情報

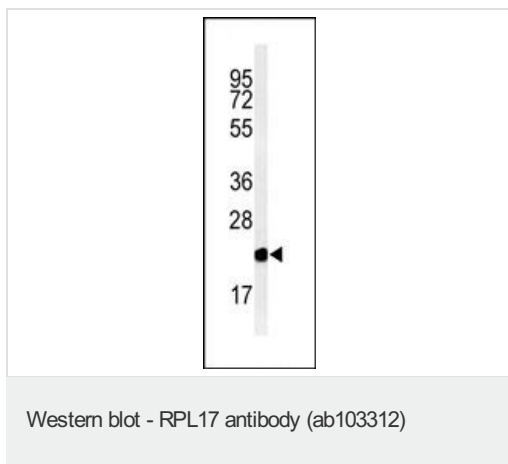
### 組織特異性

Expressed in pancreas, lung, colon, cystic duct, gall bladder, kidney and liver. Expressed at high levels in the well differentiated pancreatic tumor cell lines HPAF, Colo 357 and Capan-1, the moderately differentiated pancreatic tumor cell lines T3M4, AsPc-1 and BxPc-3, the poorly differentiated pancreatic tumor cell line Mia Paca, and the pancreatic tumor cell lines of undefined differentiation status Panc 89 and SW 979. Expressed at lower levels in the poorly differentiated pancreatic tumor cell lines HGC 25 and Panc 1.

### 配列類似性

Belongs to the ribosomal protein L22P family.

## 画像



Anti-RPL17 antibody (ab103312) at 1/100 dilution + A375 cell line lysate at 35 µg

**Predicted band size:** 21 kDa



Immunohistochemical analysis of RPL17 in formalin fixed and paraffin embedded colon carcinoma tissue, using ab103312 at a 1/50 dilution followed by peroxidase conjugation of the secondary antibody and DAB staining.

**Please note:** All products are "FOR RESEARCH USE ONLY AND ARE NOT INTENDED FOR DIAGNOSTIC OR THERAPEUTIC USE"

## Our Abpromise to you: Quality guaranteed and expert technical support

- Replacement or refund for products not performing as stated on the datasheet
- Valid for 12 months from date of delivery
- Response to your inquiry within 24 hours
- We provide support in Chinese, English, French, German, Japanese and Spanish
- Extensive multi-media technical resources to help you
- We investigate all quality concerns to ensure our products perform to the highest standards

If the product does not perform as described on this datasheet, we will offer a refund or replacement. For full details of the Abpromise, please visit <http://www.abcam.co.jp/abpromise> or contact our technical team.

## Terms and conditions

---

- Guarantee only valid for products bought direct from Abcam or one of our authorized distributors