

Product datasheet

Anti-Metabotropic Glutamate Receptor 6 antibody ab101864

画像数 1

製品の概要

製品名	Anti-Metabotropic Glutamate Receptor 6 antibody
製品の詳細	Guinea pig polyclonal to Metabotropic Glutamate Receptor 6
アプリケーション	適用あり: IHC-P
種交差性	交差種: Mouse, Rat
免疫原	Synthetic peptide: AAPPQNENAEDAK , corresponding to C terminal amino acids 859-871 of Rat Metabotropic Glutamate Receptor 6 Run BLAST with Run BLAST with
ポジティブ・コントロール	Mouse retina tissue

製品の特性

製品の状態	Liquid
保存方法	Shipped at 4°C. Store at -20°C. Stable for 12 months at -20°C.
バッファー	Preservative: 0.05% Sodium Azide Constituents: PBS
精製度	Whole antiserum
ポリ/モノ	ポリクローナル
アイソタイプ	IgG

アプリケーション

Our [Abpromise guarantee](#) covers the use of **ab101864** in the following tested applications.

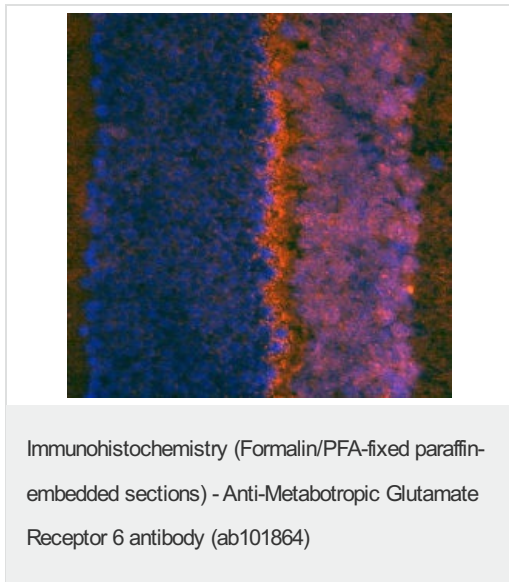
The application notes include recommended starting dilutions; optimal dilutions/concentrations should be determined by the end user.

アプリケーション	Abreviews	特記事項
IHC-P		1/200 - 1/600.

ターゲット情報

機能	Receptor for glutamate. The activity of this receptor is mediated by a G-protein that inhibits adenylate cyclase activity.
関連疾患	Defects in GRM6 are the cause of congenital stationary night blindness type 1B (CSNB1B) [MIM:257270]. This disorder consists of a previously unrecognized, autosomal recessive form of congenital night blindness associated with a negative electroretinogram waveform. Patients are night blind from an early age, and when maximally dark-adapted, they could perceive lights only with an intensity equal to or slightly dimmer than that normally detected by the cone system. ERGs in response to single brief flashes of light have clearly detectable a-waves, which are derived from photoreceptors, and greatly reduced b-waves, which are derived from the second-order inner retinal neurons. ERGs in response to sawtooth flickering light indicate a markedly reduced ON response and a nearly normal OFF response. There is no subjective delay in the perception of suddenly appearing white vs black objects on a gray background.
配列類似性	Belongs to the G-protein coupled receptor 3 family.
細胞内局在	Cell membrane.

Anti-Metabotropic Glutamate Receptor 6 antibody 画像



ab101864 staining of mouse retina (red) and DAPI nuclear counterstain (blue) at 1/200 dilution.

Please note: All products are "FOR RESEARCH USE ONLY AND ARE NOT INTENDED FOR DIAGNOSTIC OR THERAPEUTIC USE"

Our Abpromise to you: Quality guaranteed and expert technical support

- Replacement or refund for products not performing as stated on the datasheet
- Valid for 12 months from date of delivery
- Response to your inquiry within 24 hours
- We provide support in Chinese, English, French, German, Japanese and Spanish
- Extensive multi-media technical resources to help you
- We investigate all quality concerns to ensure our products perform to the highest standards

If the product does not perform as described on this datasheet, we will offer a refund or replacement. For full details of the Abpromise, please visit <http://www.abcam.co.jp/abpromise> or contact our technical team.

Terms and conditions

- Guarantee only valid for products bought direct from Abcam or one of our authorized distributors