


Product datasheet

Anti-ELF2 antibody ab100917

画像数 2

製品の概要

製品名	Anti-ELF2 antibody
製品の詳細	Rabbit polyclonal to ELF2
アプリケーション	適用あり: IHC-P, WB 適用なし: IP
種交差性	交差種: Human 交差が予測される動物種: Mouse, Rabbit, Horse, Cow, Dog, Pig, Chimpanzee, Rhesus monkey, Gorilla, Chinese hamster, Orangutan, Elephant 
免疫原	Synthetic peptide within Human ELF2 aa 543-593. The exact sequence is proprietary. Database link: EAX05123.1
ポジティブ・コントロール	HeLa, 293T lysates

製品の特性

製品の状態	Liquid
保存方法	Shipped at 4°C. Upon delivery aliquot and store at -20°C. Avoid freeze / thaw cycles.
バッファー	Preservative: 0.09% Sodium Azide Constituents: Tris citrate/phosphate, pH 7-8
精製度	Immunogen affinity purified
ポリ/モノ	ポリクローナル
アイソタイプ	IgG

アプリケーション

Our [Abpromise guarantee](#) covers the use of **ab100917** in the following tested applications.

The application notes include recommended starting dilutions; optimal dilutions/concentrations should be determined by the end user.

アプリケーション	Abreviews	特記事項
IHC-P		1/500 - 1/2000. Perform heat mediated antigen retrieval with citrate buffer pH 6 before commencing with IHC staining protocol.

アプリケーション	Abreviews	特記事項
----------	-----------	------

WB 1/2000 - 1/10000. Predicted molecular weight: 64 kDa.

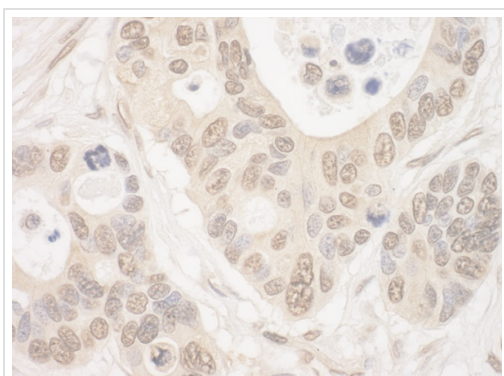
追加情報 Is unsuitable for IP.

ターゲット情報

関連性 The ELF2 gene encodes a protein that physically interacts with AML1 and mediates opposing effects on AML1 mediated transcription of the B cell specific blk gene.

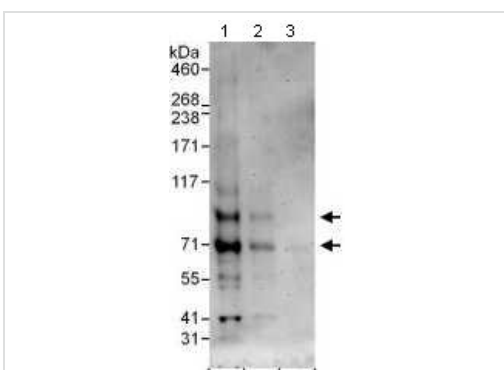
細胞内局在 Nuclear

画像



Immunohistochemistry (Formalin/PFA-fixed paraffin-embedded sections) analysis of human ovarian carcinoma tissue labelling ELF2 with ab100917 at 1/1000 (1µg/mg). Detection: DAB.

Immunohistochemistry (Formalin/PFA-fixed paraffin-embedded sections) - Anti-ELF2 antibody (ab100917)



All lanes : Anti-ELF2 antibody (ab100917) at 1 µg/ml

Lane 1 : HeLa Whole Cell Lysate at 50 µg

Lane 2 : HeLa Whole Cell Lysate at 15 µg

Lane 3 : HeLa Whole Cell Lysate at 5 µg

Predicted band size : 64 kDa

Western blot - ELF2 antibody (ab100917)

Exposure time : 3 minutes

Please note: All products are "FOR RESEARCH USE ONLY AND ARE NOT INTENDED FOR DIAGNOSTIC OR THERAPEUTIC USE"

Our Abpromise to you: Quality guaranteed and expert technical support

- Replacement or refund for products not performing as stated on the datasheet
- Valid for 12 months from date of delivery
- Response to your inquiry within 24 hours

- We provide support in Chinese, English, French, German, Japanese and Spanish
- Extensive multi-media technical resources to help you
- We investigate all quality concerns to ensure our products perform to the highest standards

If the product does not perform as described on this datasheet, we will offer a refund or replacement. For full details of the Abpromise, please visit <http://www.abcam.co.jp/abpromise> or contact our technical team.

Terms and conditions

- Guarantee only valid for products bought direct from Abcam or one of our authorized distributors