


Product datasheet

Anti-ZNF161 antibody ab68278

画像数 1

製品の概要

製品名	Anti-ZNF161 antibody
製品の詳細	Rabbit polyclonal to ZNF161
由来種	Rabbit
アプリケーション	適用あり: WB
種交差性	交差種: Human 交差が予測される動物種: Mouse, Rat, Rabbit, Chicken, Chimpanzee, Gorilla 
免疫原	Synthetic peptide conjugated to KLH derived from within residues 450 to the C-terminus of Human ZNF161. Immunogen の所有権に関して
ポジティブ・コントロール	This antibody gave a positive signal in both Human Skeletal Muscle and Human Kidney tissue lysates.

製品の特性

製品の状態	Liquid
保存方法	Shipped at 4°C. Store at +4°C short term (1-2 weeks). Upon delivery aliquot. Store at -20°C or -80°C. Avoid freeze / thaw cycle.
バッファー	pH: 7.40 Preservative: 0.02% Sodium azide Constituent: PBS Note: Batches of this product that have a concentration < 1mg/ml may have BSA added as a stabilising agent. If you would like information about the formulation of a specific lot, please contact our scientific support team who will be happy to help.
精製度	Immunogen affinity purified
ポリ/モノ	ポリクローナル
アイソタイプ	IgG

アプリケーション

Our [Abpromise guarantee](#) covers the use of **ab68278** in the following tested applications.

The application notes include recommended starting dilutions; optimal dilutions/concentrations should be determined by the end user.

アプリケーション	Abreviews	特記事項
WB		Use a concentration of 1 µg/ml. Detects a band of approximately 56 kDa (predicted molecular weight: 56 kDa).

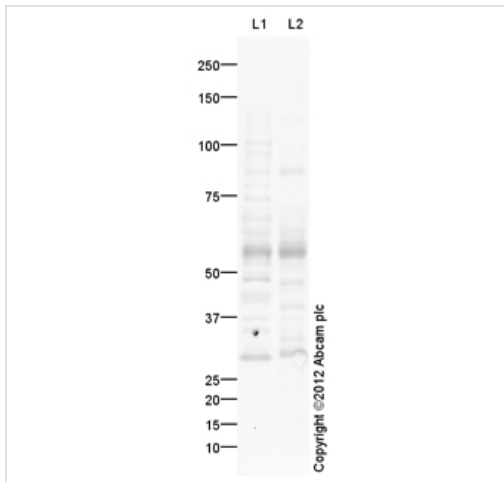
---

#### ターゲット情報

<b>機能</b>	Possible transcription factor. Specifically binds to the CT/GC-rich region of the interleukin-3 promoter and mediates tax transactivation of IL-3.
<b>組織特異性</b>	Ubiquitously expressed. Highest levels in skeletal muscle and kidney.
<b>配列類似性</b>	Belongs to the krueppel C2H2-type zinc-finger protein family. Contains 6 C2H2-type zinc fingers.
<b>細胞内局在</b>	Nucleus.

---

#### 画像



Western blot - Anti-ZNF161 antibody (ab68278)

**All lanes :** Anti-ZNF161 antibody (ab68278)  
at 1 µg/ml

**Lane 1 :** Human skeletal muscle tissue lysate  
- total protein (ab29330)

**Lane 2 :** Human kidney tissue lysate - total  
protein (ab30203)

Lysates/proteins at 10 µg per lane.

### Secondary

**All lanes :** Goat Anti-Rabbit IgG H&L (HRP)  
preadsorbed (ab97080) at 1/5000 dilution

Developed using the ECL technique.

Performed under reducing conditions.

**Predicted band size:** 56 kDa

**Observed band size:** 56 kDa

**Additional bands at:** 29 kDa, 48 kDa, 87  
kDa. We are unsure as to the identity of these  
extra bands.

**Exposure time:** 4 minutes

**Please note:** All products are "FOR RESEARCH USE ONLY AND ARE NOT INTENDED FOR DIAGNOSTIC OR THERAPEUTIC USE"

### Our Abpromise to you: Quality guaranteed and expert technical support

- Replacement or refund for products not performing as stated on the datasheet
- Valid for 12 months from date of delivery
- Response to your inquiry within 24 hours
- We provide support in Chinese, English, French, German, Japanese and Spanish
- Extensive multi-media technical resources to help you
- We investigate all quality concerns to ensure our products perform to the highest standards

If the product does not perform as described on this datasheet, we will offer a refund or replacement. For full details of the Abpromise, please visit <http://www.abcam.co.jp/abpromise> or contact our technical team.

### Terms and conditions

- Guarantee only valid for products bought direct from Abcam or one of our authorized distributors