

## Product datasheet

# Anti-ZFHx2 antibody ab121112

画像数 2

### 製品の概要

製品名	Anti-ZFHx2 antibody
製品の詳細	Rabbit polyclonal to ZFHx2
由来種	Rabbit
アプリケーション	適用あり: IHC-P, WB
種交差性	交差種: Human
免疫原	Recombinant fragment, corresponding to amino acids 2046-2190 of Human ZFHx2 (Q9C0A1). <a href="#">Run BLAST with ExPASy</a> <a href="#">Run BLAST with NCBI</a>
ポジティブ・コントロール	RT4 and U-251 MG cell lysates, Human kidney tissue

### 製品の特性

製品の状態	Liquid
保存方法	Shipped at 4°C. Upon delivery aliquot and store at -20°C. Avoid freeze / thaw cycles.
バッファー	pH: 7.20 Preservative: 0.02% Sodium azide Constituents: 59% PBS, 40% Glycerol
精製度	Immunogen affinity purified
ポリ/モノ	ポリクローナル
アイソタイプ	IgG

### アプリケーション

Our [Abpromise guarantee](#) covers the use of **ab121112** in the following tested applications.

The application notes include recommended starting dilutions; optimal dilutions/concentrations should be determined by the end user.

アプリケーション	Abreviews	特記事項
IHC-P		1/50 - 1/200. Perform heat mediated antigen retrieval with citrate buffer pH 6 before commencing with IHC staining protocol. Use buffer at pH 6 for antigen retrieval.

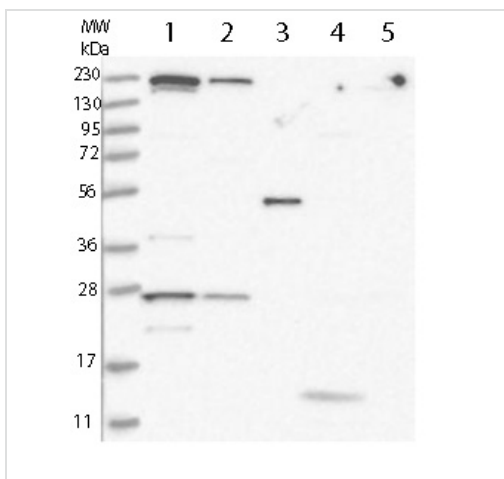
アプリケーション	Abreviews	特記事項
----------	-----------	------

WB 1/250 - 1/500.

## ターゲット情報

機能	May be involved in transcriptional regulation.
配列類似性	Contains 13 C2H2-type zinc fingers. Contains 3 homeobox DNA-binding domains.
細胞内局在	Nucleus.

## 画像

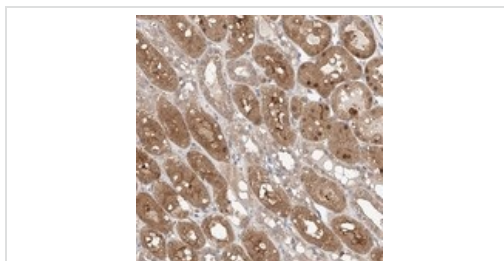


Western blot - Anti-ZFH2 antibody (ab121112)

**All lanes** : Anti-ZFH2 antibody (ab121112)  
at 1/250 dilution

- Lane 1** : RT4 cell lysate
- Lane 2** : U-251 MG cell lysate
- Lane 3** : Human Plasma lysate
- Lane 4** : Human Liver lysate
- Lane 5** : Human Tonsil lysate

Developed using the ECL technique.



Immunohistochemistry (Formalin/PFA-fixed paraffin-embedded sections) - Anti-ZFH2 antibody (ab121112)

ab121112 at 1/80 dilution staining ZFH2 in Paraffin-embedded Human kidney tissue by Immunohistochemistry. Note: moderate cytoplasmic and occasional nuclear positivity in tubular cells.

**Please note:** All products are "FOR RESEARCH USE ONLY AND ARE NOT INTENDED FOR DIAGNOSTIC OR THERAPEUTIC USE"

## **Our Abpromise to you: Quality guaranteed and expert technical support**

---

- Replacement or refund for products not performing as stated on the datasheet
- Valid for 12 months from date of delivery
- Response to your inquiry within 24 hours
  
- We provide support in Chinese, English, French, German, Japanese and Spanish
- Extensive multi-media technical resources to help you
- We investigate all quality concerns to ensure our products perform to the highest standards

If the product does not perform as described on this datasheet, we will offer a refund or replacement. For full details of the Abpromise, please visit <http://www.abcam.co.jp/abpromise> or contact our technical team.

## **Terms and conditions**

---

- Guarantee only valid for products bought direct from Abcam or one of our authorized distributors