

Product datasheet

Anti-ZCCHV antibody ab73369

3 References [画像数 2](#)

製品の概要

製品名 Anti-ZCCHV antibody
 製品の詳細 Rabbit polyclonal to ZCCHV

i This product is a **fast track antibody**. It has been affinity purified and shows high titre values against the immunizing peptide by ELISA.

[Read the terms of use »](#)

由来種 Rabbit

種交差性

交差が予測される動物種: Human, Chimpanzee, Gorilla, Orangutan **!**

免疫原 Synthetic peptide conjugated to KLH derived from within residues 300 - 400 of Human ZCCHV. Immunogen の所有権に関して (Peptide available as [ab73368](#).)

製品の特性

製品の状態 Liquid
 保存方法 Shipped at 4°C. Store at +4°C short term (1-2 weeks). Upon delivery aliquot. Store at -20°C or -80°C. Avoid freeze / thaw cycle.
 バッファー Preservative: 0.02% Sodium Azide
 Constituents: 1% BSA, PBS, pH 7.4
 精製度 Immunogen affinity purified
 ポリ/モノ ポリクローナル
 アイソタイプ IgG

アプリケーション

Fast track antibodies constitute a diverse group of products that have been released to accelerate your research, but are not yet fully characterized. They have all been affinity purified and show high titre values against the immunizing peptide (by ELISA).

[Fast track terms of use](#)

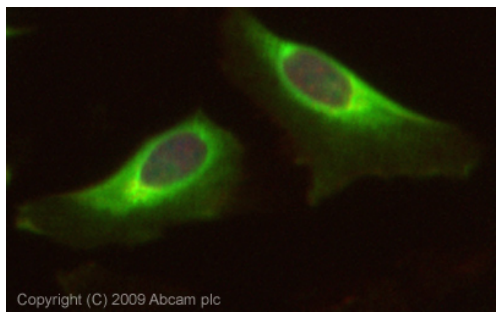
アプリケーション	Abreviews	特記事項
ELISA		Use at an assay dependent concentration. : This antibody gave a positive result in ELISA against the immunizing peptide (ab73368).
ICC/IF		Use a concentration of 1 µg/ml.
IHC-P		Use a concentration of 5 µg/ml. Perform heat mediated antigen retrieval with citrate buffer pH 6 before commencing with IHC staining protocol.

ターゲット情報

機能	Induces an innate immunity to viral infections by preventing the accumulation of viral RNAs in the cytoplasm. Seems to recruit the RNA processing exosome to degrade the target RNAs. Inhibits alphavirus and filovirus replication.
配列類似性	Contains 4 C3H1-type zinc fingers. Contains 1 PARP catalytic domain. Contains 1 WWE domain.
ドメイン	The second and fourth zinc fingers are involved in binding to specific viral RNAs.
細胞内局在	Cytoplasm. Nucleus. Localizes in the cytoplasm at steady state, but shuttles between nucleus and cytoplasm in a XPO1-dependent manner.

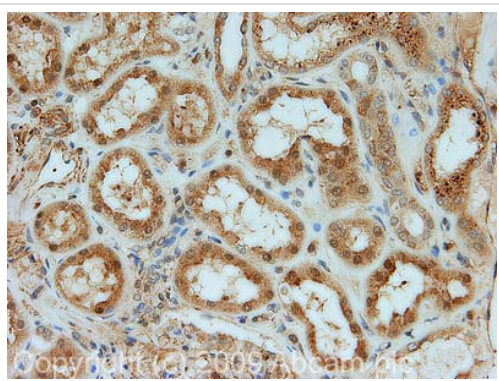
画像

This Fast-Track antibody is not yet fully characterised. These images represent **inconclusive preliminary data**.



Immunocytochemistry/ Immunofluorescence -
ZCCHV antibody (ab73369)

ICC/IF image of ab73369 stained HeLa cells. The cells were 4% PFA fixed (10 min), permeabilised in 0.1% PBS-Tween (20 min) and incubated with the antibody (ab73369, 1µg/ml) for 1h at room temperature. 1%BSA / 10% normal goat serum / 0.3M glycine was used to block non-specific protein-protein interactions. The secondary antibody (green) was Alexa Fluor® 488 goat anti-rabbit IgG (H+L) used at a 1/1000 dilution for 1h. Alexa Fluor® 594 WGA was used to label plasma membranes (red). DAPI was used to stain the cell nuclei (blue). This antibody also gave a positive IF result in 100% methanol fixed (5 mins) HePG2 and MCF7 cells. However, this Fast-Track antibody is not yet fully characterised. This image represents inconclusive preliminary data.



Immunohistochemistry (Formalin/PFA-fixed paraffin-
embedded sections) - ZCCHV antibody (ab73369)

IHC image of ZCCHV staining in Human Normal Kidney FFPE section, performed on a Bond™ system using the standard protocol F. The section was pre-treated using heat mediated antigen retrieval with sodium citrate buffer (pH6, epitope retrieval solution 1) for 20 mins. The section was then incubated with ab73369, 5µg/ml, for 15 mins at room temperature and detected using an HRP conjugated compact polymer system. DAB was used as the chromogen. The section was then counterstained with haematoxylin and mounted with DPX.

Please note: All products are "FOR RESEARCH USE ONLY AND ARE NOT INTENDED FOR DIAGNOSTIC OR THERAPEUTIC USE"

Terms and conditions

- Guarantee only valid for products bought direct from Abcam or one of our authorized distributors