


Product datasheet

Anti-XYLT1 antibody ab108263

画像数 1

製品の概要

製品名	Anti-XYLT1 antibody
製品の詳細	Rabbit polyclonal to XYLT1
由来種	Rabbit
アプリケーション	適用あり: WB
種交差性	交差種: Human 交差が予測される動物種: Mouse, Rat, Rabbit, Horse, Chicken, Guinea pig, Cow, Cat, Dog 
免疫原	Synthetic peptide corresponding to a region within internal sequence amino acids 551-600 (RITNWNRLKG CKCQYKHVD WCGCSPNDFK PQDFHRFQQT ARPTEFFARKF) of Human XYLT1 (NP_071449). Run BLAST with ExPASy Run BLAST with NCBI
ポジティブ・コントロール	PANC1 cell lysate

製品の特性

製品の状態	Liquid
保存方法	Shipped at 4°C. Upon delivery aliquot and store at -20°C. Avoid repeated freeze / thaw cycles.
バッファー	Preservative: None Constituents: 2% Sucrose, PBS
精製度	Immunogen affinity purified
ポリモノ	ポリクローナル
アイソタイプ	IgG

アプリケーション

Our [Abpromise guarantee](#) covers the use of **ab108263** in the following tested applications.

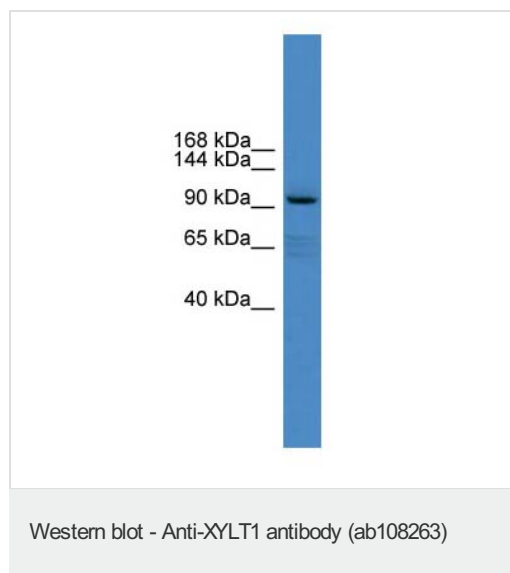
The application notes include recommended starting dilutions; optimal dilutions/concentrations should be determined by the end user.

アプリケーション	Abreviews	特記事項
WB		Use a concentration of 1 µg/ml. Predicted molecular weight: 108 kDa. Good results were obtained when blocked with 5% non-fat dry milk in 0.05% PBS-T.

ターゲット情報

機能	Catalyzes the first step in biosynthesis of glycosaminoglycan. Transfers D-xylose from UDP-D-xylose to specific serine residues of the core protein. Initial enzyme in the biosynthesis of chondroitin sulfate and dermatan sulfate proteoglycans in fibroblasts and chondrocytes.
組織特異性	Widely expressed. Expressed at higher level in placenta, kidney and pancreas. Weakly expressed in skeletal muscle.
パスウェイ	Glycan metabolism; chondroitin sulfate biosynthesis. Glycan metabolism; heparan sulfate biosynthesis.
配列類似性	Belongs to the glycosyltransferase 14 family. XylT subfamily.
翻訳後修飾	Contains 7 disulfide bonds. N-glycosylated.
細胞内局在	Endoplasmic reticulum membrane. Golgi apparatus membrane. Secreted. Some fraction is also found in the extracellular space together with chondroitin sulfate proteoglycans, suggesting that it can be secreted.

画像



Anti-XYL1 antibody (ab108263) at 1 µg/ml +
PANC1 cell lysate at 10 µg

Predicted band size: 108 kDa

Gel concentration 6-18%

Please note: All products are "FOR RESEARCH USE ONLY AND ARE NOT INTENDED FOR DIAGNOSTIC OR THERAPEUTIC USE"

Our Abpromise to you: Quality guaranteed and expert technical support

- Replacement or refund for products not performing as stated on the datasheet

- Valid for 12 months from date of delivery
- Response to your inquiry within 24 hours

- We provide support in Chinese, English, French, German, Japanese and Spanish
- Extensive multi-media technical resources to help you
- We investigate all quality concerns to ensure our products perform to the highest standards

If the product does not perform as described on this datasheet, we will offer a refund or replacement. For full details of the Abpromise, please visit <http://www.abcam.co.jp/abpromise> or contact our technical team.

Terms and conditions

- Guarantee only valid for products bought direct from Abcam or one of our authorized distributors