


Product datasheet

Anti-XBP1 antibody ab28715

画像数 1

製品の概要

製品名	Anti-XBP1 antibody
製品の詳細	Rabbit polyclonal to XBP1
由来種	Rabbit
アプリケーション	適用あり: WB
種交差性	交差種: Rat, Human 交差が予測される動物種: Mouse 
免疫原	Synthetic peptide conjugated to KLH derived from within residues 200 to the C-terminus of Human XBP1. Immunogen の所有権に関して (Peptide available as ab30769 .)
ポジティブ・コントロール	This antibody gave a positive signal in the following lysates: Jurkat Whole Cell, A431 Whole Cell, Rat Testis Tissue

製品の特性

製品の状態	Liquid
保存方法	Shipped at 4°C. Store at +4°C short term (1-2 weeks). Upon delivery aliquot. Store at -20°C or -80°C. Avoid freeze / thaw cycle.
バッファー	Preservative: 0.02% Sodium Azide Constituents: 1% BSA, PBS. pH 7.4
精製度	Immunogen affinity purified
ポリ/モノ	ポリクローナル
アイソタイプ	IgG

アプリケーション

Our [Abpromise guarantee](#) covers the use of **ab28715** in the following tested applications.

The application notes include recommended starting dilutions; optimal dilutions/concentrations should be determined by the end user.

アプリケーション	Abreviews	特記事項
WB		

追加情報

WB: Use at a concentration of 1 µg/ml. Detects a band of approximately 35 kDa (predicted molecular weight: 33 kDa). We believe this band represents the protein product of the unprocessed XBP1 mRNA that is present in the absence of a stress response.

Not yet tested in other applications.

Optimal dilutions/concentrations should be determined by the end user.

ターゲット情報

機能

Transcription factor essential for hepatocyte growth, the differentiation of plasma cells, the immunoglobulin secretion, and the unfolded protein response (UPR). Acts during endoplasmic reticulum stress (ER) by activating unfolded protein response (UPR) target genes via direct binding to the UPR element (UPRE). Binds DNA preferably to the CRE-like element 5'-GATGACGTG[TG]N(3)[AT]T-3', and also to some TPA response elements (TRE). Binds to the HLA DR-alpha promoter. Binds to the Tax-responsive element (TRE) of HTLV-I.

関連疾患

Genetic variations in XBP1 could be associated with susceptibility to major affective disorder type 7 (MAFD7) [MIM:612371]. Major affective disorders represent a class of mental disorders characterized by a disturbance in mood as their predominant feature.

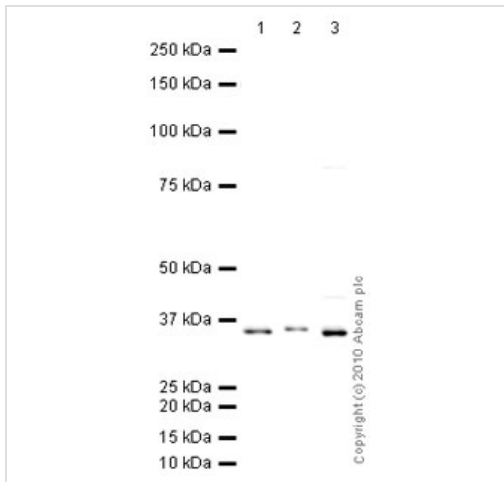
配列類似性

Belongs to the bZIP family.
Contains 1 bZIP domain.

細胞内局在

Nucleus.

画像



Western blot - Anti-XBP1 antibody (ab28715)

All lanes : Anti-XBP1 antibody (ab28715) at 1 µg/ml

Lane 1 : A431 (Human epithelial carcinoma cell line) Whole Cell Lysate

Lane 2 : Testis (Rat) Tissue Lysate

Lane 3 : Jurkat (Human T cell lymphoblast-like cell line) Whole Cell Lysate

Lysates/proteins at 10 µg per lane.

Secondary

All lanes : Goat polyclonal to Rabbit IgG - H&L - Pre-Adsorbed (HRP) at 1/3000 dilution

Developed using the ECL technique.

Performed under reducing conditions.

Predicted band size: 33 kDa

Observed band size: 35 kDa

Exposure time: 8 minutes

We believe the 35 kDa band corresponds to the protein product of the unprocessed XBP1 mRNA that is present in the absence of a stress response.

Please note: All products are "FOR RESEARCH USE ONLY AND ARE NOT INTENDED FOR DIAGNOSTIC OR THERAPEUTIC USE"

Our Abpromise to you: Quality guaranteed and expert technical support

- Replacement or refund for products not performing as stated on the datasheet
- Valid for 12 months from date of delivery
- Response to your inquiry within 24 hours
- We provide support in Chinese, English, French, German, Japanese and Spanish
- Extensive multi-media technical resources to help you
- We investigate all quality concerns to ensure our products perform to the highest standards

If the product does not perform as described on this datasheet, we will offer a refund or replacement. For full details of the Abpromise, please visit <http://www.abcam.co.jp/abpromise> or contact our technical team.

Terms and conditions

- Guarantee only valid for products bought direct from Abcam or one of our authorized distributors