

Product datasheet

Anti-WISP1 antibody ab60114

1 References [画像数 1](#)

製品の概要

製品名	Anti-WISP1 antibody
製品の詳細	Rabbit polyclonal to WISP1
由来種	Rabbit
アプリケーション	<b>適用あり:</b> ELISA, IHC-P
種交差性	<b>交差種:</b> Human
免疫原	Synthetic peptide: CEDDAKRPRKTAPRDT conjugated to KLH, corresponding to N terminal amino acids 185-200 of Human WISP1 <a href="#">Run BLAST with</a> <a href="#">Run BLAST with</a>
ポジティブ・コントロール	Human hepatocarcinom tissue.

製品の特性

製品の状態	Liquid
保存方法	Shipped at 4°C. Store at +4°C short term (1-2 weeks). Upon delivery aliquot. Store at -20°C or -80°C. Avoid freeze / thaw cycle.
バッファー	Preservative: 0.09% Sodium Azide Constituents: PBS
精製度	Protein G purified
特記事項 (精製)	This antibody is purified through a protein G column and eluted out with both high and low pH buffers and neutralized immediately after elution then followed by dialysis against PBS.
ポリモノ	ポリクローナル
アイソタイプ	IgG

アプリケーション

Our [Abpromise guarantee](#) covers the use of **ab60114** in the following tested applications.

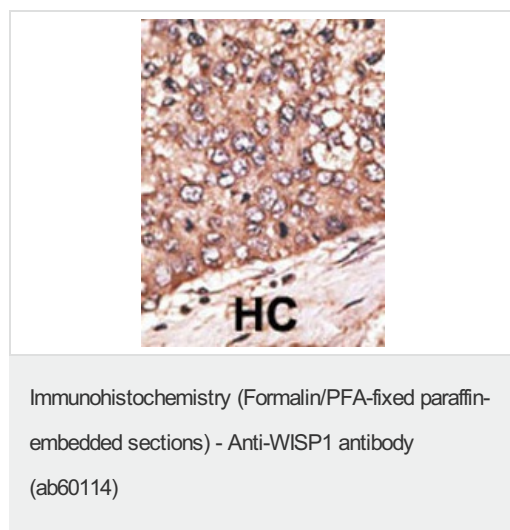
The application notes include recommended starting dilutions; optimal dilutions/concentrations should be determined by the end user.

アプリケーション	Abreviews	特記事項
ELISA		1/1000.
IHC-P		1/50 - 1/100.

## ターゲット情報

関連性	WISP1 is a downstream regulator in the Wnt/Frizzled-signaling pathway and is associated with cell survival. WISP1 attenuates p53-mediated apoptosis in response to DNA damage through activation of AKT kinase and up-regulates the anti-apoptotic Bcl-X(L) protein. WISP1 is expressed in heart, kidney, lung, pancreas, placenta, ovary, small intestine and spleen. Overexpression is associated with several cancers including breast cancer and colon tumors.
細胞内局在	Secreted

## 画像



Ab60114 (1/50-1/100) staining human WISP1 in human cancer tissue by immunohistochemistry using formalin fixed, paraffin embedded tissue.

Formalin-fixed and paraffin-embedded human cancer tissue reacted with the primary antibody, which was peroxidase-conjugated to the secondary antibody, followed by AEC staining.

HC = hepatocarcinoma.

**Please note:** All products are "FOR RESEARCH USE ONLY AND ARE NOT INTENDED FOR DIAGNOSTIC OR THERAPEUTIC USE"

## Our Abpromise to you: Quality guaranteed and expert technical support

- Replacement or refund for products not performing as stated on the datasheet
- Valid for 12 months from date of delivery
- Response to your inquiry within 24 hours
- We provide support in Chinese, English, French, German, Japanese and Spanish
- Extensive multi-media technical resources to help you
- We investigate all quality concerns to ensure our products perform to the highest standards

If the product does not perform as described on this datasheet, we will offer a refund or replacement. For full details of the Abpromise, please visit <http://www.abcam.co.jp/abpromise> or contact our technical team.

## Terms and conditions

---

- Guarantee only valid for products bought direct from Abcam or one of our authorized distributors