

## Product datasheet

# Anti-VPS35 antibody ab10099

KO 評価済

★★★★☆ 3 Abreviews 20 References 画像数 7

### 製品の概要

<b>製品名</b>	Anti-VPS35 antibody
<b>製品の詳細</b>	Goat polyclonal to VPS35
<b>由来種</b>	Goat
<b>アプリケーション</b>	<b>適用あり:</b> IHC-P, WB, ICC/IF
<b>種交差性</b>	<b>交差種:</b> Mouse, Rat, Human <b>交差が予測される動物種:</b> Cow
<b>免疫原</b>	Synthetic peptide corresponding to Human VPS35 aa 783-796 (C terminal). Sequence: C-SPESEGPIYEGLLI  (Peptide available as <a href="#">ab23181</a> ) <div style="display: flex; justify-content: space-around; margin-top: 10px;"> <span> <a href="#">Run BLAST with</a></span> <span> <a href="#">Run BLAST with</a></span> </div>
<b>ポジティブ・コントロール</b>	WB: Human cerebellum tissue lysate. IHC-P: Human testis tissue. ICC/IF: HEK293 and SHSY5Y cells.
<b>特記事項</b>	<p>The maintenance of organelles in eukaryotic cells depends on sorting proteins, which ensure the proper delivery of organelle-specific proteins. In <i>S. cerevisiae</i>, VPS35 has a direct role in the retrieval of vacuolar cargo proteins, suggesting that human VPS35 may have an analogous function in the maintenance of lysosomes.</p>

### 製品の特性

<b>製品の状態</b>	Liquid
<b>保存方法</b>	Shipped at 4°C. Upon delivery aliquot and store at -20°C or -80°C. Avoid repeated freeze / thaw cycles.
<b>バッファー</b>	pH: 7.30 Preservative: 0.02% Sodium azide Constituents: 99% Tris buffered saline, 0.5% BSA
<b>精製度</b>	Immunogen affinity purified

## 特記事項(精製)

Purified from goat serum by ammonium sulphate precipitation followed by antigen affinity chromatography using the immunizing peptide.

## 一次抗体 備考

The maintenance of organelles in eukaryotic cells depends on sorting proteins, which ensure the proper delivery of organelle-specific proteins. In *S. cerevisiae*, VPS35 has a direct role in the retrieval of vacuolar cargo proteins, suggesting that human VPS35 may have an analogous function in the maintenance of lysosomes.

## ポリ/モノ

ポリクローナル

## アイソタイプ

IgG

## アプリケーション

Our [Abpromise guarantee](#) covers the use of **ab10099** in the following tested applications.

The application notes include recommended starting dilutions; optimal dilutions/concentrations should be determined by the end user.

アプリケーション	Abreviews	特記事項
IHC-P		Use at an assay dependent concentration.
WB	★★★★☆	Use a concentration of 0.1 - 0.3 µg/ml. Detects a band of approximately 85 kDa (predicted molecular weight: 91 kDa). Can be blocked with <a href="#">Human VPS35 peptide (ab23181)</a> .
ICC/IF	★★★★★	Use at an assay dependent concentration.

## ターゲット情報

### 機能

Essential component of the retromer complex, a complex required to retrieve lysosomal enzyme receptors (IGF2R and M6PR) from endosomes to the trans-Golgi network. Also required to regulate transcytosis of the polymeric immunoglobulin receptor (pIgR-pIgA).

### 組織特異性

Ubiquitous. Highly expressed in heart, brain, placenta, skeletal muscle, spleen, thymus, testis, ovary, small intestine, kidney and colon.

### 配列類似性

Belongs to the VPS35 family.

### 細胞内局在

Cytoplasm. Membrane.

## 画像



Western blot - Anti-VPS35 antibody (ab10099)

**All lanes** : Anti-VPS35 antibody (ab10099) at 1  $\mu\text{g/ml}$

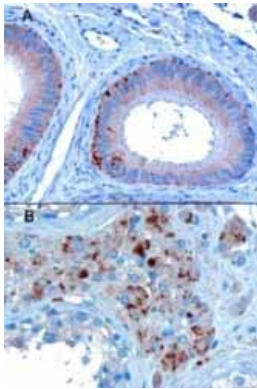
**Lane 1** : Human Brain Cerebellum lysate in RIPA buffer

**Lane 2** : Rat Brain lysate in RIPA buffer

Lysates/proteins at 35  $\mu\text{g}$  per lane.

**Predicted band size:** 91 kDa

Detected by chemiluminescence.



Immunohistochemistry (Formalin/PFA-fixed paraffin-embedded sections) - VPS35 antibody (ab10099)

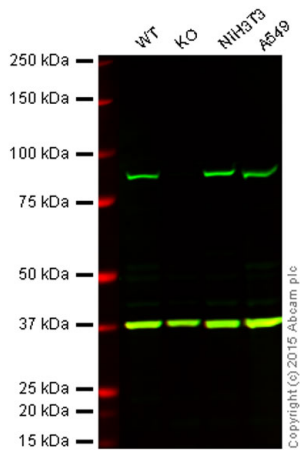
ab10099 staining Human Testis by IHC-P.

Image A) shows cytoplasmic staining of epithelial cells of the epididymis of the rete testis and image B), some Leydig cells.

Microwaved antigen retrieval with A)

Tris/EDTA buffer pH9 at 3 $\mu\text{g/ml}$  and B) Citrate

buffer pH6 at 10 $\mu\text{g/ml}$ , HRP-staining.



Western blot - Anti-VPS35 antibody (ab10099)

**Lane 1:** Wild-type HAP1 cell lysate (20 µg)

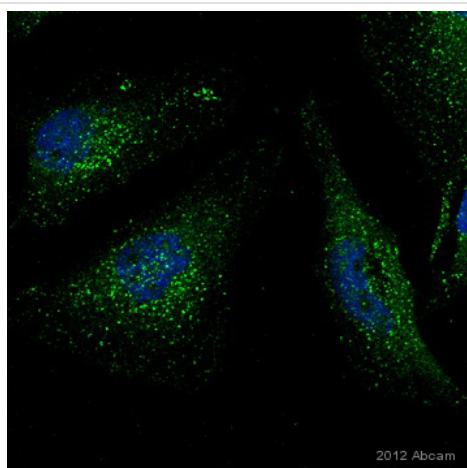
**Lane 2:** VPS35 knockout HAP1 cell lysate (20 µg)

**Lane 3:** NIH3T3 cell lysate (20 µg)

**Lane 4:** A549 cell lysate (20 µg)

**Lanes 1 - 4:** Merged signal (red and green). Green - ab10099 observed at 85 kDa. Red - loading control, ab181602, observed at 37 kDa.

ab10099 was shown to specifically react with VPS35 when VPS35 knockout samples were used. Wild-type and VPS35 knockout samples were subjected to SDS-PAGE. ab10099 and ab181602 (loading control to GAPDH) were diluted to 1 µg/ml and 1/1000 respectively and incubated overnight at 4°C. Blots were developed with IRDye® 800CW Donkey anti-Goat IgG (H + L) and Donkey Anti-Rabbit IgG H&L (IRDye® 680RD) preadsorbed (ab216779) secondary antibodies at 1/10 000 dilution for 1 h at room temperature before imaging.



Immunocytochemistry/ Immunofluorescence - Anti-VPS35 antibody (ab10099)

This image is courtesy of an anonymous Abreview

Immunofluorescence analysis of HeLa cells, staining VPS35 with ab10099.

Cells were fixed with paraformaldehyde, permeabilized with 0.1% Triton X-100 and blocked with 10% serum for 1 hour at 22°C. Samples were incubated with primary antibody (1/150 in 10% Serum in PBS) for 16 hours at 4°C. An AlexaFluor®488-conjugated donkey anti-goat polyclonal IgG (1/300) was used as the secondary antibody.



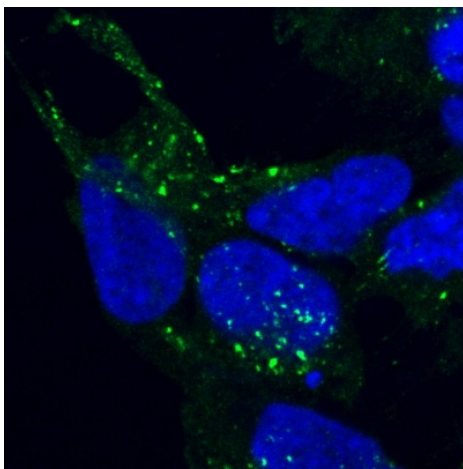
Western blot - Anti-VPS35 antibody (ab10099)

Anti-VPS35 antibody (ab10099) at 0.1  $\mu\text{g/ml}$   
+ Human cerebellum tissue lysate in RIPA  
buffer at 35  $\mu\text{g}$

Developed using the ECL technique.

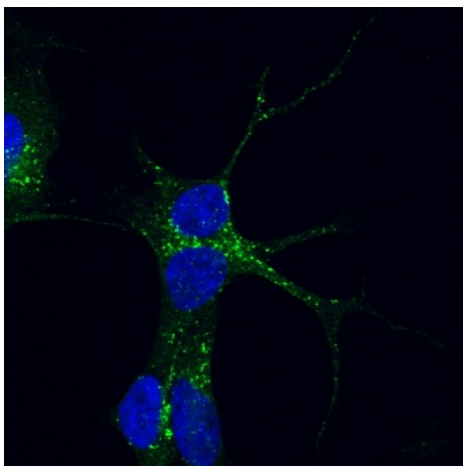
**Predicted band size:** 91 kDa

Incubated with the primary antibody for 1 hour.



Immunocytochemistry/ Immunofluorescence - Anti-VPS35 antibody (ab10099)

Immunocytochemistry/Immunofluorescence  
analysis of PFA-fixed and saponin  
permeabilized HEK293 cells labelling VPS35  
with ab10099.



Immunocytochemistry/ Immunofluorescence - Anti-VPS35 antibody (ab10099)

Immunocytochemistry/Immunofluorescence  
analysis of PFA-fixed and saponin  
permeabilized SHSY5Y cells labelling VPS35  
with ab10099.

---

## **Our Abpromise to you: Quality guaranteed and expert technical support**

---

- Replacement or refund for products not performing as stated on the datasheet
- Valid for 12 months from date of delivery
- Response to your inquiry within 24 hours
  
- We provide support in Chinese, English, French, German, Japanese and Spanish
- Extensive multi-media technical resources to help you
- We investigate all quality concerns to ensure our products perform to the highest standards

If the product does not perform as described on this datasheet, we will offer a refund or replacement. For full details of the Abpromise, please visit <http://www.abcam.co.jp/abpromise> or contact our technical team.

## **Terms and conditions**

---

- Guarantee only valid for products bought direct from Abcam or one of our authorized distributors