


Product datasheet

Anti-Transglutaminase 2 antibody ab73170

3 References [画像数 3](#)

製品の概要

製品名	Anti-Transglutaminase 2 antibody
製品の詳細	Rabbit polyclonal to Transglutaminase 2
アプリケーション	適用あり: IHC-P, ICC/IF, WB
種交差性	交差種: Human 交差が予測される動物種: Cow, Dog, Chimpanzee 
免疫原	Synthetic peptide conjugated to KLH derived from within residues 650 to the C-terminus of Human Transglutaminase 2. Immunogen の所有権に関して (Peptide available as ab73169 .)
ポジティブ・コントロール	This antibody gave a positive signal in the following Human Lysates: Placenta Tissue, SW480 Whole Cell, HeLa Whole Cell, HepG2 Whole Cell

製品の特性

製品の状態	Liquid
保存方法	Shipped at 4°C. Store at +4°C short term (1-2 weeks). Upon delivery aliquot. Store at -20°C or -80°C. Avoid freeze / thaw cycle.
バッファー	Preservative: 0.02% Sodium Azide Constituents: 1% BSA, PBS, pH 7.4
精製度	Immunogen affinity purified
ポリ/モノ	ポリクローナル
アイソタイプ	IgG

アプリケーション

Our [Abpromise guarantee](#) covers the use of **ab73170** in the following tested applications.

The application notes include recommended starting dilutions; optimal dilutions/concentrations should be determined by the end user.

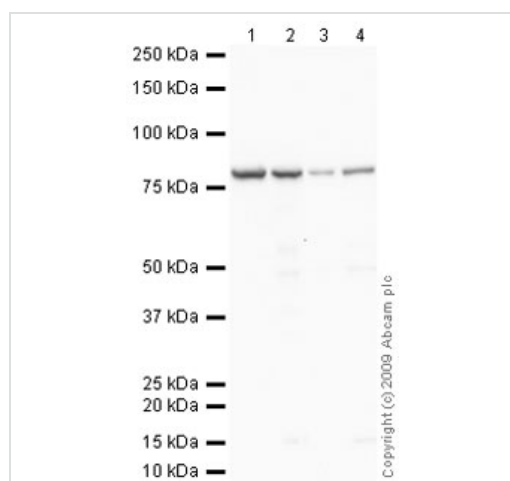
アプリケーション	Abreviews	特記事項
IHC-P		Use a concentration of 1 µg/ml.

アプリケーション	Abreviews	特記事項
ICC/IF		Use a concentration of 5 µg/ml.
WB		Use a concentration of 1 µg/ml. Detects a band of approximately 77 kDa (predicted molecular weight: 77 kDa).

ターゲット情報

機能	Catalyzes the cross-linking of proteins and the conjugation of polyamines to proteins.
配列類似性	Belongs to the transglutaminase superfamily. Transglutaminase family.

画像



Western blot - Anti-Transglutaminase 2 antibody (ab73170)

All lanes : Anti-Transglutaminase 2 antibody (ab73170) at 1 µg/ml

Lane 1 : Human placenta tissue lysate - total protein (ab29745)

Lane 2 : SW480 whole cell lysate (ab3957)

Lane 3 : HeLa (Human epithelial carcinoma cell line) Whole Cell Lysate

Lane 4 : HepG2 (Human hepatocellular liver carcinoma cell line) Whole Cell Lysate

Lysates/proteins at 10 µg per lane.

Secondary

Goat polyclonal to Rabbit IgG - H&L - Pre-Adsorbed (HRP) at 1/3000 dilution

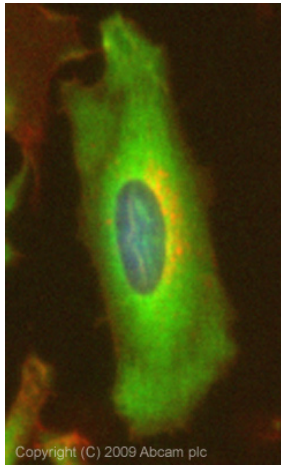
Developed using the ECL technique

Performed under reducing conditions.

Predicted band size : 77 kDa

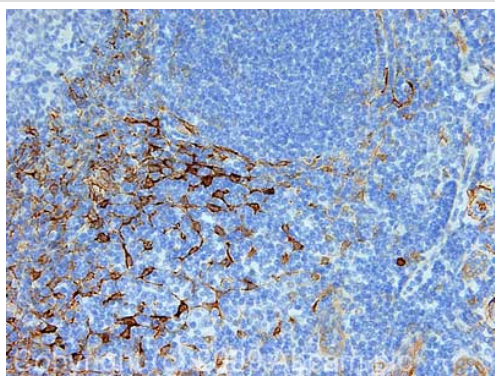
Observed band size : 77 kDa

Exposure time : 30 seconds



Immunocytochemistry/ Immunofluorescence -
Transglutaminase 2 antibody (ab73170)

ICC/IF image of ab73170 stained HeLa cells. The cells were 4% PFA fixed (10 min) and then incubated in 1%BSA / 10% normal goat serum / 0.3M glycine in 0.1% PBS-Tween for 1h to permeabilise the cells and block non-specific protein-protein interactions. The cells were then incubated with the antibody (ab73170, 5µg/ml) overnight at +4°C. The secondary antibody (green) was Alexa Fluor® 488 goat anti-rabbit IgG (H+L) used at a 1/1000 dilution for 1h. Alexa Fluor® 594 WGA was used to label plasma membranes (red) at a 1/200 dilution for 1h. DAPI was used to stain the cell nuclei (blue) at a concentration of 1.43µM. This antibody also gave a positive result in 4% PFA fixed (10 min) HepG2, Hek293 and MCF7 cells at 5µg/ml, and in 100% methanol fixed (5 min) HeLa, Hek293, HepG2 and MCF7 cells at 5µg/ml



Immunohistochemistry (Formalin/PFA-fixed paraffin-embedded sections) - Transglutaminase 2 antibody (ab73170)

IHC image of Transglutaminase 2 staining in Human Tonsil FFPE section, performed on a Bond™ system using the standard protocol F. The section was pre-treated using heat mediated antigen retrieval with sodium citrate buffer (pH6, epitope retrieval solution 1) for 20 mins. The section was then incubated with ab73170, 1µg/ml, for 15 mins at room temperature and detected using an HRP conjugated compact polymer system. DAB was used as the chromogen. The section was then counterstained with haematoxylin and mounted with DPX

Please note: All products are "FOR RESEARCH USE ONLY AND ARE NOT INTENDED FOR DIAGNOSTIC OR THERAPEUTIC USE"

Our Promise to you: Quality guaranteed and expert technical support

- Replacement or refund for products not performing as stated on the datasheet
- Valid for 12 months from date of delivery
- Response to your inquiry within 24 hours
- We provide support in Chinese, English, French, German, Japanese and Spanish
- Extensive multi-media technical resources to help you

- We investigate all quality concerns to ensure our products perform to the highest standards

If the product does not perform as described on this datasheet, we will offer a refund or replacement. For full details of the Abpromise, please visit <http://www.abcam.co.jp/abpromise> or contact our technical team.

Terms and conditions

- Guarantee only valid for products bought direct from Abcam or one of our authorized distributors