


Product datasheet

Anti-Topoisomerase III alpha antibody ab108493

画像数 2

製品の概要

| | |
|--------------|--|
| 製品名 | Anti-Topoisomerase III alpha antibody |
| 製品の詳細 | Rabbit polyclonal to Topoisomerase III alpha |
| 由来種 | Rabbit |
| アプリケーション | 適用あり: WB, ICC/IF |
| 種交差性 | 交差種: Human 交差が予測される動物種: Chimpanzee, Gorilla  |
| 免疫原 | Synthetic peptide conjugated to KLH derived from within residues 900 - 1000 of Human Topoisomerase III alpha. Immunogen の所有権に関して |
| ポジティブ・コントロール | This antibody gave a positive signal in both HeLa and HEK293 whole cell lysates. This antibody gave a positive result in IF in the following Methanol fixed cell line: HeLa. |

製品の特性

| | |
|--------|--|
| 製品の状態 | Liquid |
| 保存方法 | Shipped at 4°C. Store at +4°C short term (1-2 weeks). Upon delivery aliquot. Store at -20°C or -80°C. Avoid freeze / thaw cycle. |
| バッファー | pH: 7.40 Preservative: 0.02% Sodium azide Constituent: PBS Note: Batches of this product that have a concentration < 1mg/ml may have BSA added as a stabilising agent. If you would like information about the formulation of a specific lot, please contact our scientific support team who will be happy to help. |
| 精製度 | Immunogen affinity purified |
| ポリ/モノ | ポリクローナル |
| アイソタイプ | IgG |

アプリケーション

Our [Abpromise guarantee](#) covers the use of **ab108493** in the following tested applications.

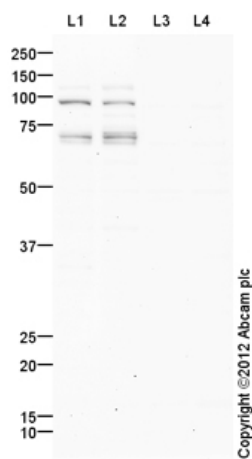
The application notes include recommended starting dilutions; optimal dilutions/concentrations should be determined by the end user.

| アプリケーション | Abreviews | 特記事項 |
|----------|-----------|--|
| WB | | Use a concentration of 1 µg/ml. Detects a band of approximately 100 kDa (predicted molecular weight: 112 kDa). |
| ICC/IF | | Use a concentration of 1 µg/ml. |

ターゲット情報

| | |
|--------------|--|
| 機能 | Reduces the number of supercoils in a highly negatively supercoiled DNA. Essential component of the RMI complex, a complex that plays an important role in the processing of homologous recombination intermediates to limit DNA crossover formation in cells. |
| 組織特異性 | High expression is found in testis, heart, skeletal muscle and pancreas. |
| 配列類似性 | Belongs to the prokaryotic type I/III topoisomerase family. Contains 1 Toprim domain. |

画像



Western blot - Anti-Topoisomerase III alpha antibody (ab108493)

All lanes : Anti-Topoisomerase III alpha antibody (ab108493) at 1 µg/ml

Lane 1 : HeLa (Human epithelial carcinoma cell line) Whole Cell Lysate

Lane 2 : HEK293 (Human embryonic kidney cell line) Whole Cell Lysate

Lane 3 : HeLa (Human epithelial carcinoma cell line) Whole Cell Lysate with Immunizing peptide at 1 µg/ml

Lane 4 : HEK293 (Human embryonic kidney cell line) Whole Cell Lysate with Immunizing peptide at 1 µg/ml

Lysates/proteins at 10 µg per lane.

Secondary

All lanes : Goat Anti-Rabbit IgG H&L (HRP) preadsorbed (ab97080) at 1/5000 dilution

Developed using the ECL technique.

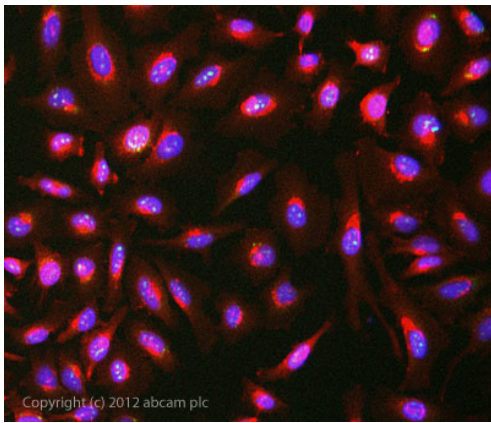
Performed under reducing conditions.

Predicted band size: 112 kDa

Observed band size: 100 kDa

Additional bands at: 110 kDa, 70 kDa. We are unsure as to the identity of these extra bands.

Exposure time: 16 minutes



Immunocytochemistry/ Immunofluorescence - Anti-Topoisomerase III alpha antibody (ab108493)

ab108493 stained HeLa cells. The cells were 100% methanol fixed (5 min) and then incubated in 1%BSA / 10% normal goat serum / 0.3M glycine in 0.1% PBS-Tween for 1h to permeabilise the cells and block non-specific protein-protein interactions. The cells were then incubated with the antibody ab108493 at 1µg/ml overnight at +4°C. The secondary antibody (green) was DyLight® 488 goat anti- rabbit (ab96899) IgG (H+L) used at a 1/1000 dilution for 1h. Alexa Fluor® 594 WGA was used to label plasma membranes (red) at a 1/200 dilution for 1h. DAPI was used to stain the cell nuclei (blue) at a concentration of 1.43µM.

Please note: All products are "FOR RESEARCH USE ONLY AND ARE NOT INTENDED FOR DIAGNOSTIC OR THERAPEUTIC USE"

Our Abpromise to you: Quality guaranteed and expert technical support

- Replacement or refund for products not performing as stated on the datasheet
- Valid for 12 months from date of delivery
- Response to your inquiry within 24 hours
- We provide support in Chinese, English, French, German, Japanese and Spanish
- Extensive multi-media technical resources to help you
- We investigate all quality concerns to ensure our products perform to the highest standards

If the product does not perform as described on this datasheet, we will offer a refund or replacement. For full details of the Abpromise, please visit <http://www.abcam.co.jp/abpromise> or contact our technical team.

Terms and conditions

- Guarantee only valid for products bought direct from Abcam or one of our authorized distributors